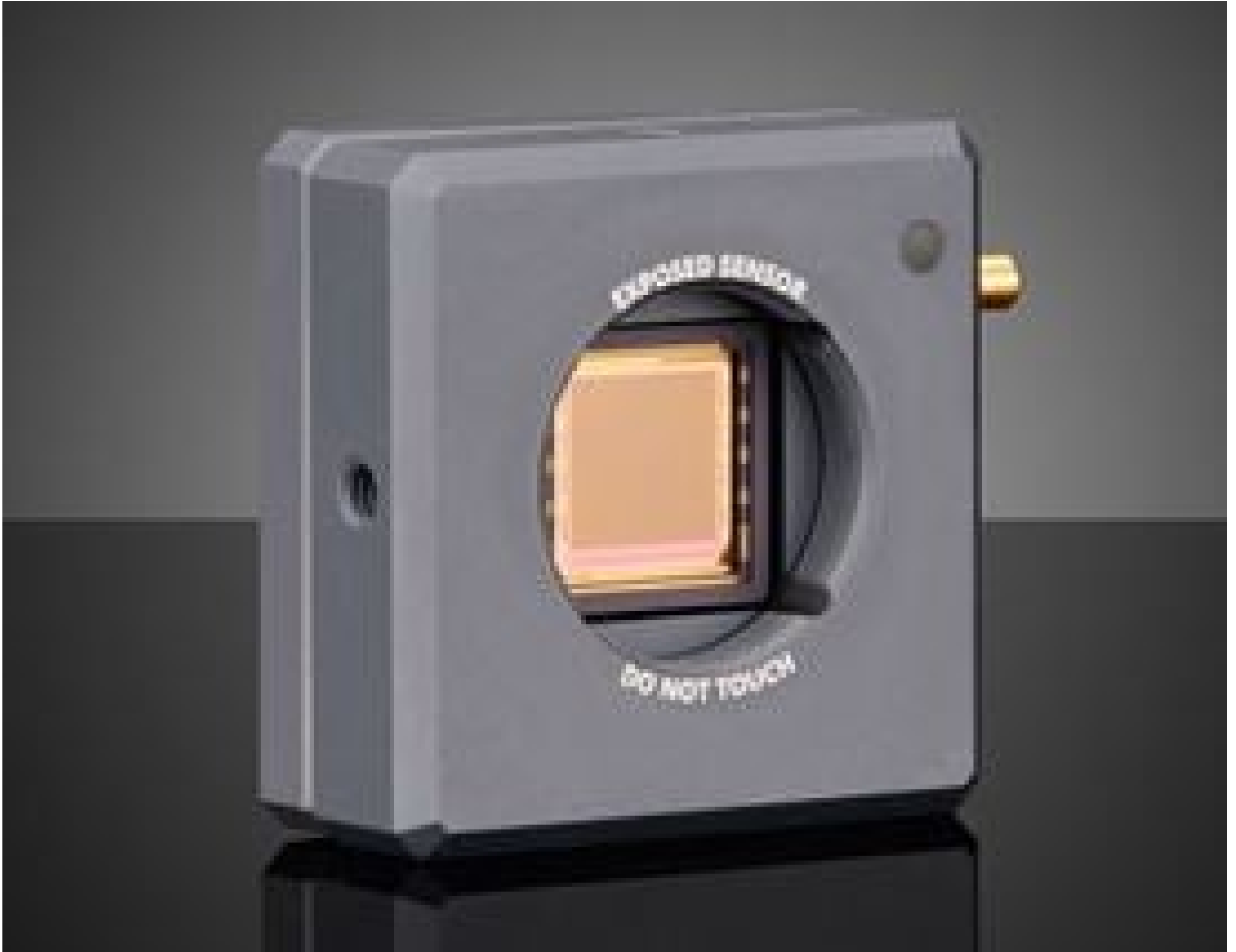


## WinCamD-LCM TEL Beam Profiler, C-Mount



Stock #91-097 **NEW** 1 In Stock

- 1 + MRP ₹8,89,956

● Price inclusive of all taxes

**ADD TO CART**

Volume Pricing	
Qty 1+	₹8,89,956 each
Need More?	<a href="#">Request Quote</a>

### Product Downloads

### General

S-WCD-LCM-C-TEL **Model Number:**

**Contents of Kit:**  
Includes C-Mount 1" ND filters (MagND-1, MagND-2, MagND-4, 1290nm Longpass Filter).

### Physical & Mechanical Properties

46 x 46 x 20 **Dimensions (mm):**

±2µm **Dimensional Accuracy:**

## Optical Properties

1480 - 1610 **Spectral Range:**

USB 2.0: 6.3 kHz **Minimum Stimulation, Pulsed:**  
USB 3.0: 12.6 kHz

55 (10 Pixels) **Beam Diameter ( $\mu\text{m}$ ):**

## Sensor

5.5 x 5.5 **Pixel Size, H x V ( $\mu\text{m}$ ):**

2,048 x 2,048 **Pixels (H x V):**

11.3 x 11.3 **Sensing Area, H x V (mm):**

1" **Sensor Format:**

$\geq 12$  **Frame Rate:**

## Electrical

2,500:1 **Signal to Noise S/N Ratio (dB):**

34 dB optical / 68 dB electrical **Peak Noise (nW/cm<sup>2</sup>):**

## Threading & Mounting

8-32 thread, 8 mm deep **Mount:**

## Regulatory Compliance

[Exempt](#) **RoHS 2015:**

[View](#) **Certificate of Conformance:**

United States **Country of Origin:**

**Imported By:**  
Edmund Optics India Private Limited  
267, Greystone Building, Second Floor,  
6th Cross Rd, Binnamangala,  
Stage 1, Indiranagar, Bengaluru,  
Karnataka, India 560038  
Phone: +91- 80-6845 0000

## Product Details

- Designed for Use from 355 to 16000nm
- Compatible with Beam Diameters Down to 52 $\mu\text{m}$
- Robust and Easy to Use Free Software [Provided](#)
- Measure Beam Wander, M<sup>2</sup>, Divergence, and More

DataRay Camera Beam Profilers provide excellent solutions for beam analysis of both continuous wave and pulsed laser sources. Each beam profiler features an integrated CMOS sensor (IR profilers feature Microbolometer sensors) that eliminates comet trailing for higher resolution output and allows for update rates of 60+ Hz. Sensors are available with active sizes of 6.6, 11.3, and 25mm horizontals, enabling measurement of large beam diameters. DataRay Camera Beam Profilers have the added advantage of a free, robust software with analysis features such as M<sup>2</sup> measurement, beam wander and logging, and instrument alignment. These profilers are USB3.0/2.0 powered and include a 3m flexible screw locking cable. Neutral density filters with optical densities of 1.0, 2.0, and 4.0 are included.