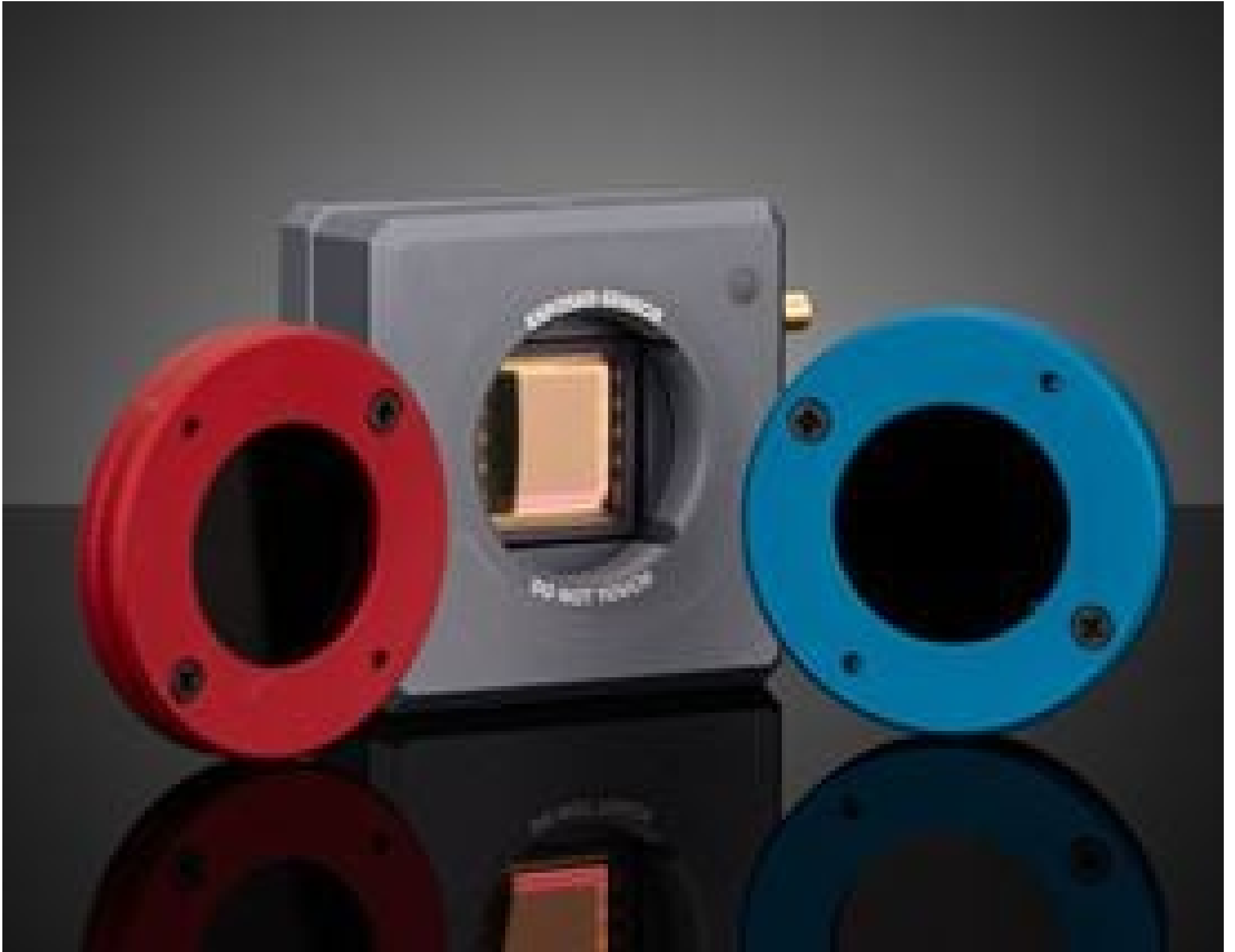


WinCamD-LCM-C-UV Beam Profiling Camera



#24-211 WnCamD-LCMBeam Profiler

Stock **#71-562** [CONTACT US](#)

1 [-](#) [+](#) MRP ₹7,78,446

Price inclusive of all taxes

ADD TO CART

Volume Pricing

Qty 1+	₹7,78,446 each
Need More?	Request Quote

Product Downloads

General

Model Number:
S-WCD-LCMC-UV

Contents of Kit:
Includes C-mount filters (ND-1, ND-2, ND-4) and 1" filters with C-mount adapter (NDL-1-UV, NDL-2-UV, NDL-4-UV).

Physical & Mechanical Properties

Dimensions (mm):
46 x 46 x 20

±1µm **Dimensional Accuracy:**

Optical Properties

190 - 1150 **Spectral Range:**
Minimum Stimulation, Pulsed:
USB 2.0: 6.3 kHz USB 3.0: 12.6 kHz

55 (10 Pixels) **Beam Diameter (µm):**

Sensor

5.5 x 5.5 **Pixel Size, H x V (µm):**

2,048 x 2,048 **Pixels (H x V):**

11.3 x 11.3 **Sensing Area, H x V (mm):**

1" **Sensor Format:**

60Hz **Frame Rate:**

Electrical

2,500:1 **Signal to Noise S/N Ratio (dB):**

34 dB optical / 68 dB electrical **Peak Noise (nW/cm²):**

Threading & Mounting

8-32 thread, 8 mm deep **Mount:**

Regulatory Compliance

[Exempt](#) **RoHS 2015:**

[View](#) **Certificate of Conformance:**

[Contains SVHC\(s\)](#) **REACH 241:**

United States **Country of Origin:**

Imported By:
Edmund Optics India Private Limited
267, Greystone Building, Second Floor,
6th Cross Rd, Binnamangala,
Stage 1, Indiranagar, Bengaluru,
Karnataka, India 560038
Phone: +91- 80-6845 0000

Product Details

- Designed for Use from 355 to 16000nm
- Compatible with Beam Diameters Down to 52µm
- Robust and Easy to Use Free Software [Provided](#)
- Measure Beam Wander, M², Divergence, and More

DataRay Camera Beam Profilers provide excellent solutions for beam analysis of both continuous wave and pulsed laser sources. Each beam profiler features an integrated CMOS sensor (IR profilers feature Microbolometer sensors) that eliminates comet trailing for higher resolution output and allows for update rates of 60+ Hz. Sensors are available with active sizes of 6.6, 11.3, and 25mm horizontals, enabling measurement of large beam diameters. DataRay Camera Beam Profilers have the added advantage of a free, robust software with analysis features such as M² measurement, beam wander and logging, and instrument alignment. These profilers are USB3.0/2.0 powered and include a 3m flexible screw locking cable. Neutral density filters with optical densities of 1.0, 2.0, and 4.0 are included.