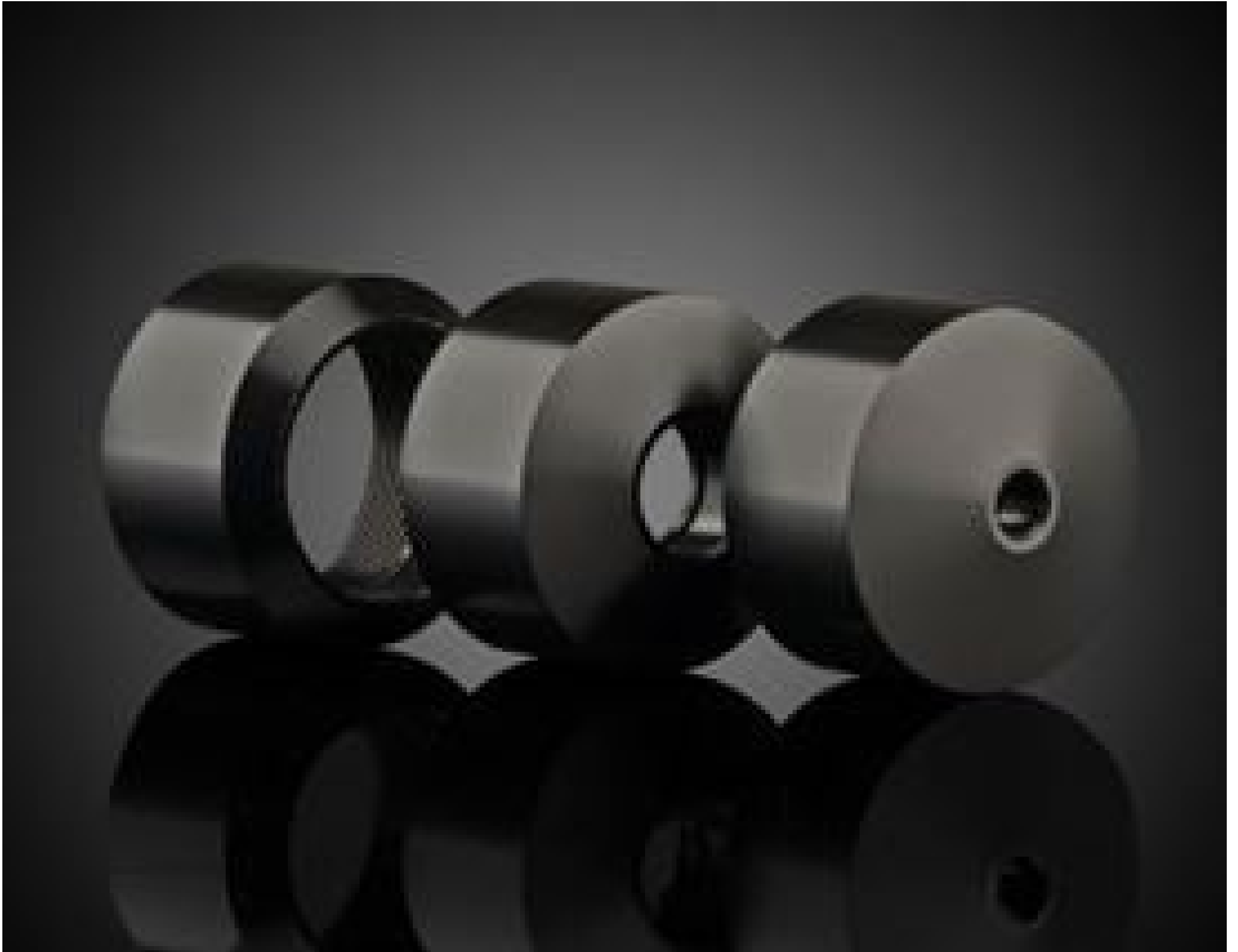


SM1 Tube, 19.05mm Optic Adapter



Stock #36-419 **20+ In Stock**

1 MRP ₹3,027

Price inclusive of all taxes

ADD TO CART

Volume Pricing

Qty 1-5	₹3,027 each
Qty 6+	₹2,856 each
Need More?	Request Quote

Product Downloads

General

Fixed **Type:**

Circular **Type of Optics:**

SMTube System **Tube System Compatibility:**

Physical & Mechanical Properties

Min. Thickness of Compatible Optics (mm):

0.50

Max. Thickness of Compatible Optics (mm):

8.50

Clear Aperture CA (mm):

18.05

Construction:

Black Anodized Aluminum

Threading & Mounting

Size of Compatible Optics (mm):

19.05

Regulatory Compliance

RoHS 2015:

[Compliant](#)

Certificate of Conformance:

[View](#)

REACH 241:

[Compliant](#)

Country of Origin:

China

Imported By:

Edmund Optics India Private Limited
267, Greystone Building, Second Floor,
6th Cross Rd, Binnamangala,
Stage 1, Indiranagar, Bengaluru,
Karnataka, India 560038
Phone: +91- 80-6845 0000

Product Details

- Compatible with any [SM1 Threaded Lens Tube](#)
- Mounts 5mm to 19.05mm Optical Components
- Drop-In Mounting for Easy Assembly

SM Lens Tube Drop-In Mounts allow easy integration of many standard diameter lenses into SM1 Tube Systems. Featuring a common outer diameter of 25.4mm, the mount design ensures lenses are well centered when dropped into [SM1 threaded lens tubes](#). These drop-in mounts expand the mounting diameter capability of any SM1 threaded lens tube system from only 25.0/25.4mm diameter optics to also include 5mm, 6mm, 9mm, 10mm, 15mm, 18mm, and 19.05mm diameter optics. SM Lens Tube Drop-In Mounts are compatible with any SM1 threaded lens tube, making these mounts an essential addition to any lab or OEM system setup.