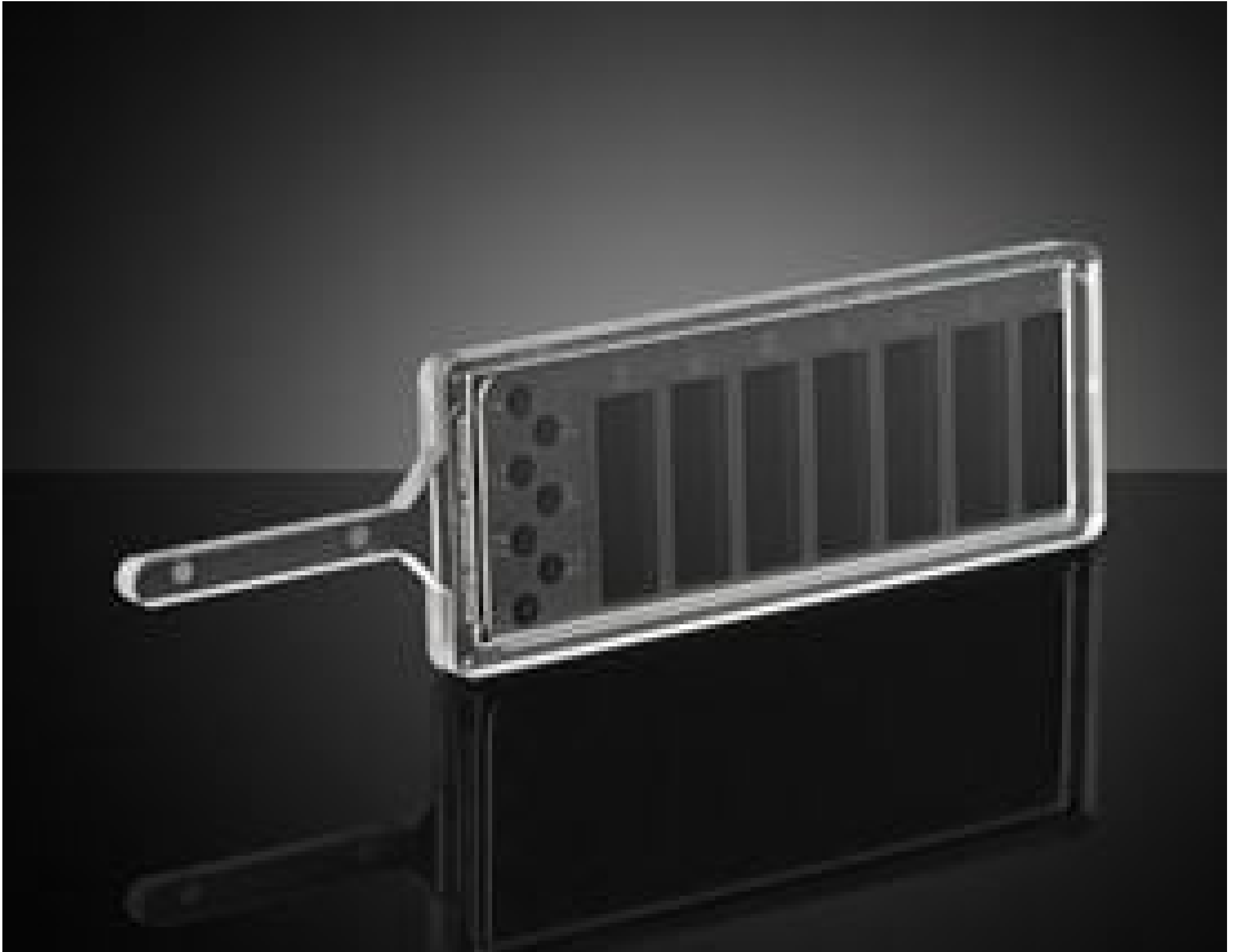


[See all 1 Products in Family](#)

## Scratch-Dig Paddle



Stock #91-291 **NEW** 13 In Stock

- 1 + MRP ₹16,939

● Price inclusive of all taxes

**ADD TO CART**

Volume Pricing	
Qty 1+	₹16,939 each
Need More?	<a href="#">Request Quote</a>

### Product Downloads

### General

**Note:**

Scratch Numbers: 10, 20, 40, 60, 80, 120, 160  
Dig Numbers: 5, 10, 20, 40, 50, 70, 100

### Physical & Mechanical Properties

**Dimensions (inches):**

0.25 W x 4.62 L x 1.75 H with 2" L handle

### Regulatory Compliance

RoHS 2015:

Compliant

Certificate of Conformance:

[View](#)

Reach 251:

Compliant

Country of Origin:

United States

Imported By:

Edmund Optics India Private Limited  
267, Greystone Building, Second Floor,  
6th Cross Rd, Binnamangala,  
Stage 1, Indiranagar, Bengaluru,  
Karnataka, India 560038  
Phone: +91- 80-6845 0000

## Product Details

- Inspect Optics' Surface Quality to MIL-PRF-13830B Standard
- Molded High Quality Plastic/Acrylic Paddle with Ergonomic Handle
- Seven Clearly Labeled Reference Areas for Both Scratches and Digs

The Scratch-Dig Paddle is an essential reference for inspecting surface imperfections on optical components in accordance with MIL-PRF-13830B standards. Molded from high-quality acrylic, it features a series of precisely defined scratches and digs that enable users to quickly assess cosmetic quality and compare compliance with optical specifications. Although not certified, this paddle contains features that can be used as a reference to compare any optic for classifying surface quality requirements ranging between 10-5 and 160-100. The paddle has seven clearly labeled reference areas for both scratches and digs, allowing fast, repeatable inspection of scratches and digs of any optical components. Scratch-Dig Paddles are ideal for production, QA, or cleanroom use, and provide a durable and reliable visual benchmark for consistent optical inspection.

This paddle includes seven scratch reference numbers—10, 20, 40, 60, 80, 120, and 160—and seven dig reference numbers—5, 10, 20, 40, 50, 70, and 100—corresponding to MIL-PRF-13830B visual standards. During inspection, the paddle is held adjacent to the optical element to compare the apparent width of scratches or diameter of digs against the calibrated scale markings. Scratches are aligned with the vertical bars on the left side of the paddle, while digs are matched to the circular features directly below.

### Instructions For Use:

Under MIL-PRF-13803B compliant inspection conditions, hold the paddle adjacent to the optical element subject to inspection. To visually compare surface imperfections from the optical element, determine the dimension of the imperfection utilizing the incremental scale on the paddle. Scratches are to be compared to the scale examples shown on the vertical bars. Look for the label "Scratches" on the left side of the paddle when facing the operator. Digs are to be compared to the round scale examples immediately below the vertical bars. Look for the label "Digs" on the left side of the paddle when facing the operator. For accurate evaluation, use diffuse illumination and maintain consistent viewing geometry.

### Cleaning Instructions:

Remove any debris from the Scratch-Dig Paddle using compressed air only. Keep the Scratch-Dig Paddle away from all solvents and inside the protective case when not in use.

### Important Notice:

This guide is intended to provide general assistance to operators in performing visual inspections and utilizing the Scratch-Dig Paddle in accordance with MIL-PRF-13803B standards. It is not a replacement for the full MIL-PRF-13803B specification, or any product-specific design or contractual requirements. Operators are advised to refer directly to the official MIL-PRF-13803B standard for complete and authoritative details. This guide is for support purposes only.