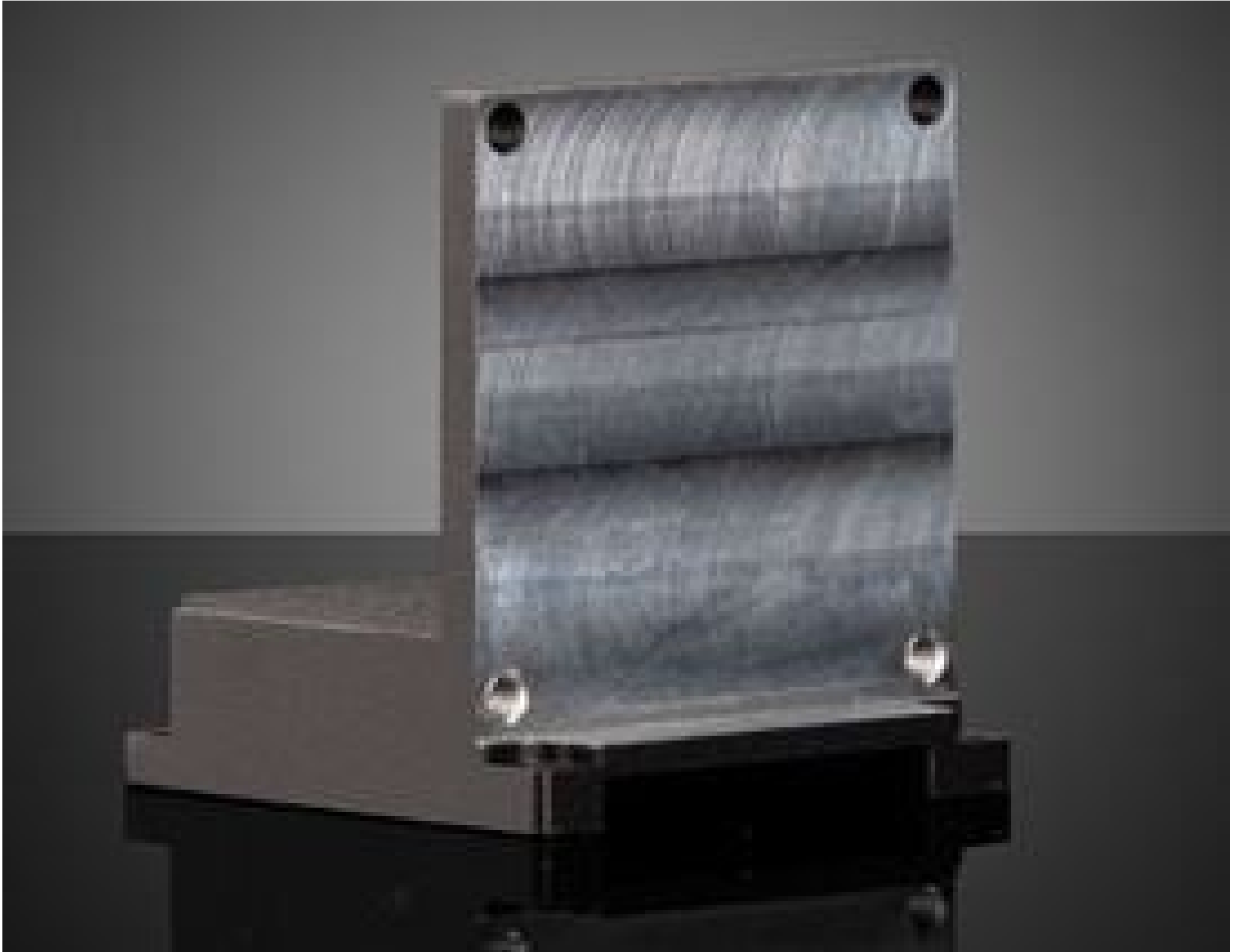


Phoenix Camera 24mm 90° Bracket Transform Kit

See More by [LUCID Vision Labs™](#)



Phoenix Camera 24mm 90° Bracket Transform Kit

Stock #25-154 **1 In Stock**

MRP ₹11,894

● Price inclusive of all taxes

ADD TO CART

Volume Pricing

Qty 1+	₹11,894 each
Need More?	Request Quote

Product Downloads

General

Camera Accessory **Type:**

PHX24-TK90 **Model Number:**

Contents of Kit:
 1 x 90° Mounting Bracket Plate
 2 x M1.7 x L10 Screws
 2 x M1.7 x L8 Screws
 2 x M1.7 x L4 Screws

Regulatory Compliance

Certificate of Conformance:

[View](#)

Canada

Country of Origin:

Imported By:

Edmund Optics India Private Limited
267, Greystone Building, Second Floor,
6th Cross Rd, Binnamangala,
Stage 1, Indiranagar, Bengaluru,
Karnataka, India 560038
Phone: +91- 80-6845 0000

Product Details

- Unfolding Board Stacks for Customization
- Power Over Ethernet (PoE) for Easy Integration
- Compact Size Starting at 24 x 24mm

LUCID Vision Labs Phoenix™ Power over Ethernet (PoE) Cameras are compact, high performance cameras with one of the smallest form factors in the PoE GigE market. Featuring unfolding board stacks, these cameras easily transform between a 90° and 180° angle shape to provide flexible system integration. Additional software versatility is provided by GigE Vision compliancy, allowing for compatibility with third-party GigE Vision software. LUCID Vision Labs Phoenix™ Power over Ethernet (PoE) Cameras offer powerful Image Signal Processing (ISP), ensuring optimal camera performance with options including Region of Interest (ROI), Color Correction Matrix (CCM), and Binning without any limitations on higher frame rates. These cameras are ideal for industrial applications requiring cameras with compact form factors.

Note: GigE cable required for operation, both RJ45 and ix™ versions are available. The ix™ is a miniaturized industrial connector that is not compatible with RJ45 cables. Optional tripod adapter ([#11-474](#)) available.