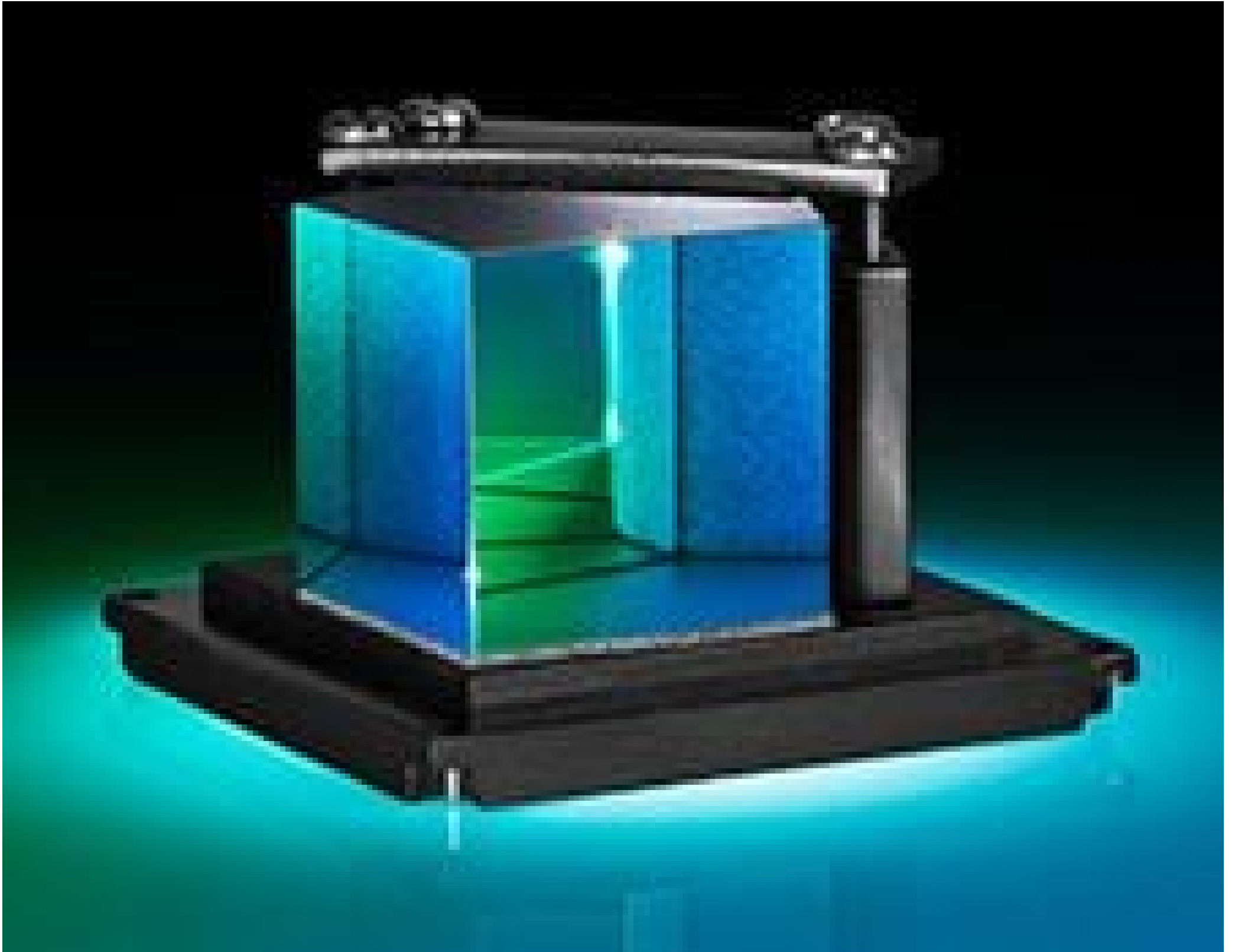
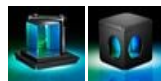


**TECHSPEC® Penta Prism in C-Mount Cube**



#53-401, Penta Prism in C-Mount Cube (Case Removed)



Stock **#53-401** [CONTACT US](#)

⊖ 1 ⊕ MRP ₹42,072

ⓘ Price inclusive of all taxes

**ADD TO CART**

Volume Pricing	
Qty 1-4	₹42,072 each
Qty 5-9	₹37,128 each
Qty 10-25	₹34,172 each
Need More?	<a href="#">Request Quote</a>

Product Downloads

**General**

Penta Prism **Type:**

**Physical & Mechanical Properties**

**Extension Length (mm):**

38.0

**Dimensional Tolerance (mm):**

±0.10

**Bevel:**

Protective as needed

**Construction:**

Housing: Black Anodized Aluminum

**Length of Legs (mm):**

25.00

## Optical Properties

**Coating:**

MgF<sub>2</sub> & Aluminized

**Substrate:** □

[N-BK7](#)

**Surface Quality:**

60-40

**Angle Tolerance (arcmin):**

3

**Image Orientation:**

Right-Handed

**Coating Specification:**

Entrance/Exit Faces: R<sub>avg</sub> ≤ 1.75% @ 400 - 700nm

Reflecting Surfaces: R<sub>avg</sub> > 85% @ 400 - 700nm

w/Black Overpaint

**Ray Deviation (°):**

90

**Wavelength Range (nm):**

400 - 700

**Power (fringes) @ 632.8nm:**

3.00

**Irregularity (fringes) @ 632.8nm:**

0.25

## Threading & Mounting

**Mounting Threads:**

1/4-20

**Thread Type:**

C-Mount (1" x 32 TPI)

## Regulatory Compliance

**RoHS 2015:**

[Compliant](#)

**Certificate of Conformance:**

[View](#)

**Reach 251:**

[Compliant](#)

**Country of Origin:**

Singapore

**Imported By:**

Edmund Optics India Private Limited  
267, Greystone Building, Second Floor,  
6th Cross Rd, Binnamangala,  
Stage 1, Indiranagar, Bengaluru,  
Karnataka, India 560038  
Phone: +91- 80-6845 0000

## Product Details

- Ray Deviation of 90°
- Right Handed Image
- Ideal for Visual/ Video Applications
- Easily Integrates with Our [C-Mount Components](#)

Designed for use with C-mount compatible hardware, our TECHSPEC® C-Mounted Penta Prism is quickly and easily integrated. A [TECHSPEC® N-BK7 Penta Prism](#) is fixed securely within a black anodized aluminum housing with two female C-mount apertures. Applications include space-restricted visual/video imaging systems requiring ray deviation of 90°. Entrance and exit faces (at the apertures) are anti-reflection coated to maximize efficiency and reduce the effect of double-images. A 1/4-20 tapped hole in the base permits post mounting.

Penta prisms are five-sided prisms featuring a ray deviation of 90° and a right handed image. The reflecting surfaces are aluminized for increased efficiency. Slight movement of the prism does not affect the true right angle at which light rays are reflected, making a penta prism the ideal optical tool for defining a right angle in an optical system.

## Technical Information

