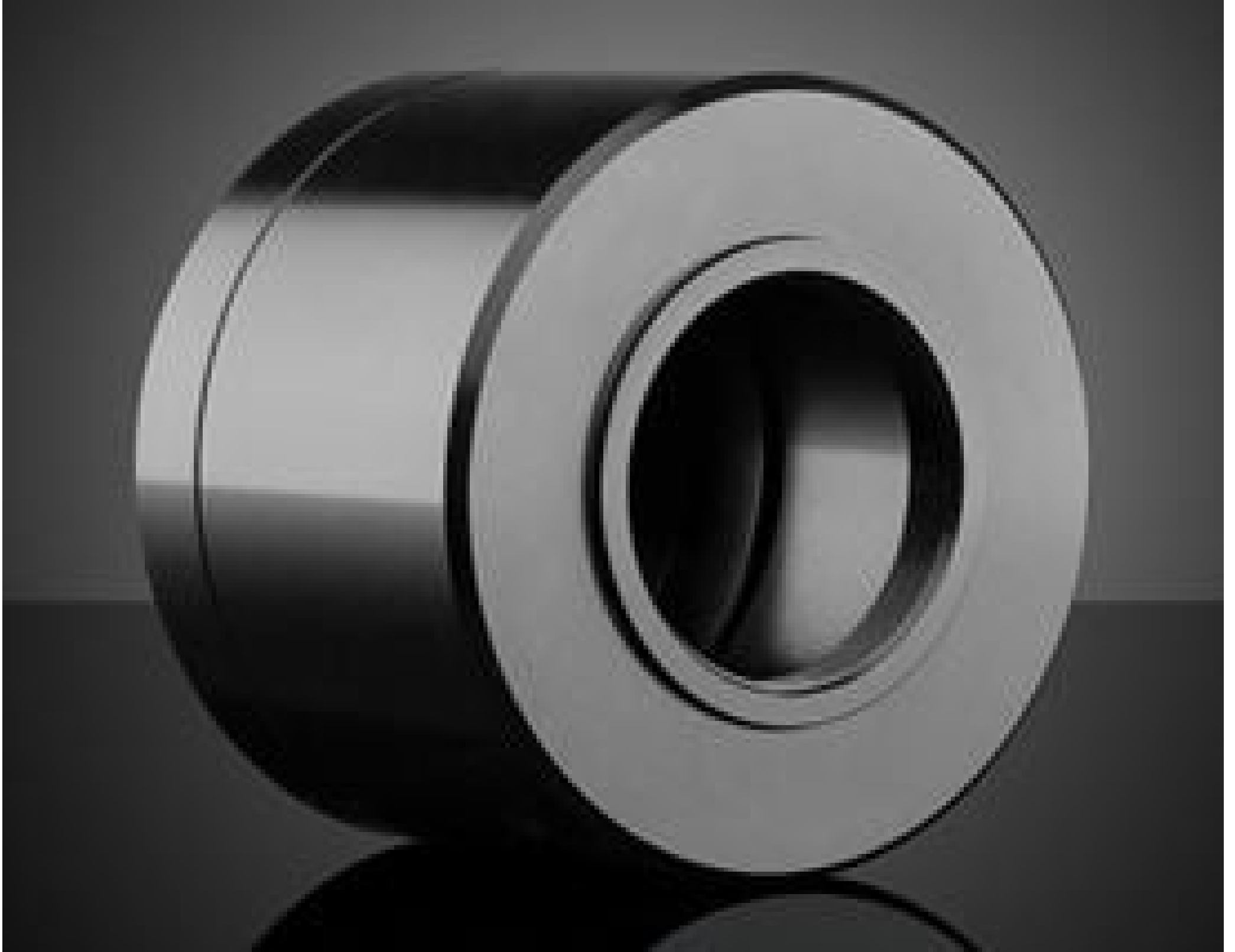


[See all 7 Products in Family](#)

Nikon Tube Lens to C-Mount Holder

See More by [Nikon](#)



Nikon Tube Lens to C-Mount Holder (#11-150)

Stock **#11-150** **8 In Stock**

1 MRP ₹18,585

! Price inclusive of all taxes

ADD TO CART

Volume Pricing

Qty 1+	₹18,585 each
Need More?	Request Quote

Product Downloads

General

Microscope Accessory **Type:**

Requires adapter [#11-148](#) to connect Nikon objective **Note:**

Physical & Mechanical Properties

37.70 **Length (mm):**

Outer Diameter (mm):

Threading & Mounting

Mounting Threads:

1" x 32 TPI (Male and Female)

Regulatory Compliance

Certificate of Conformance:

[View](#)

Country of Origin:

United States

Imported By:

Edmund Optics India Private Limited
 267, Greystone Building, Second Floor,
 6th Cross Rd, Binnamangala,
 Stage 1, Indiranagar, Bengaluru,
 Karnataka, India 560038
 Phone: +91-80-6845 0000

Product Details

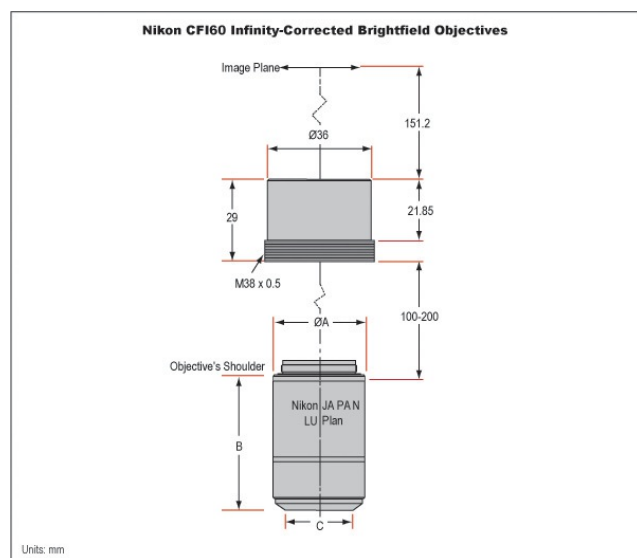
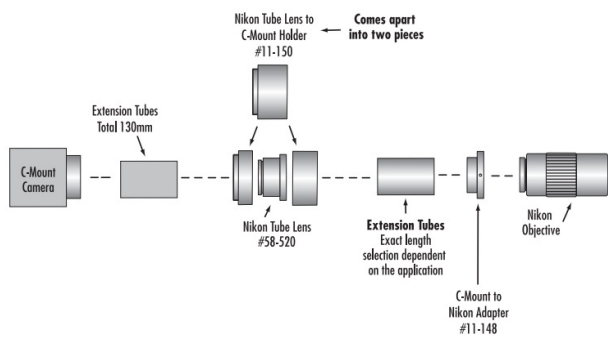
- Excellent Color Reproduction
- Long Working Distance and High NA
- High Contrast with Minimal Flare
- Strain Free

Nikon CF160 Infinity Corrected Brightfield Objectives are designed to meet advanced imaging requirements and are the culmination of Nikon's optical technology. The objectives offer increased brightness and the highest possible combination of working distance and numerical aperture (for light gathering ability) due to the 60mm parfocal distance and a large barrel diameter. Designed to correct lateral and axial chromatic aberrations over the entire field of view, these objectives produce high contrast and high-resolution images. Nikon CF160 Infinity Corrected Brightfield Objectives have excellent color reproduction, strain free. These brightfield objectives are offered in magnifications from 5X up to 100X.

The accessory tube lens ([#58-520](#)) can be used to focus light from the infinity corrected objective onto the image plane. For optimal performance, the distance between the tube lens and the objective's shoulder should be kept within 100-200mm. This spacing allows accessories to be inserted in the optical path to accommodate specific needs. This tube lens can be integrated into C-Mount systems using the Nikon Tube Lens to C-Mount Holder ([#11-150](#)).

Note: The four socket head cap screws must be removed to place the tube lens within the Nikon Tube Lens to C-Mount Holder.

Technical Information



	5X	10X	20X	50X	100X
A	29.0mm	29.0mm	29.0mm	30.0mm	30.0mm
B	36.3mm	42.4mm	40.9mm	48.9mm	55.4mm
C	20.0mm	17.0mm	22.5mm	21.5mm	21.5mm

Nikon CF160 Infinity Corrected Brightfield Objectives

