

**TECHSPEC® Mitutoyo Filter Holder**

See More by [Mitutoyo](#)



Mitutoyo Filter Holder, #56-993

Stock **#56-993** **12 In Stock**

MRP ₹11,576

**1** Price inclusive of all taxes

**ADD TO CART**

Volume Pricing	
Qty 1-9	₹11,576 each
Qty 10-24	₹10,514 each
Need More?	<a href="#">Request Quote</a>

Product Downloads

**General**

Objective Accessory **Type:**

**Physical & Mechanical Properties**

24.20 **Length (mm):**

30.00 **Outer Diameter (mm):**

9 Max. Thickness of Compatible Optics (mm):

3 Min. Thickness of Compatible Optics (mm):

## Threading & Mounting

### Mounting Threads:

M26 x 36 TPI (Male and Female)

### Diameter of Compatible Optics (mm):

25.0 - 25.4

## Regulatory Compliance

### RoHS 2015:

Compliant

### Certificate of Conformance:

[View](#)

### Reach 235:

Compliant

### Country of Origin:

United States

### Imported By:

Edmund Optics India Private Limited  
267, Greystone Building, Second Floor,  
6th Cross Rd, Binnamangala,  
Stage 1, Indiranagar, Bengaluru,  
Karnataka, India 560038  
Phone: +91- 80-6845 0000

## Product Details

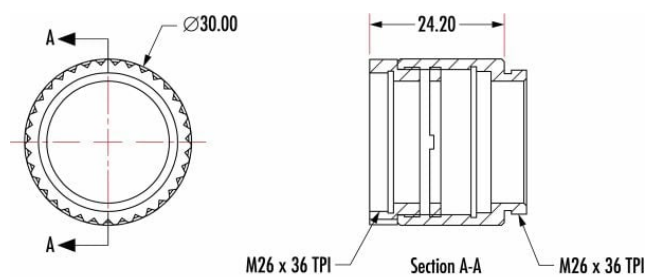
- Camera Extension Tube Allows Integration of C-Mount [Cameras](#)
- Adapters Ease Integration of MT-1 and MT-2 [Tube Lenses](#)
- Connect with C-Mount or RMS Threaded Components

Accessories and Adapters for Mitutoyo Objectives are designed to ease the integration of [Mitutoyo Objectives](#) and tube lenses with C-mount cameras and systems. The C-Mount camera extension tube features a M26 x 36 TPI female thread and a C-mount male thread, and is designed to easily connect an objective and tube lens to a C-mount camera. The extension tube provides the 152.5mm of length that is required to generate a focused image on the camera sensor when used with the MT-4 or MT-40 [tube lenses](#).

The MT-1/MT-2 and MT-L/MT-L4 C-mount adapters are two-piece assemblies with male and female C-mount threading. The adapters enclose the tube lenses for easy integration into C-mount threaded systems. Filters, beam splitters and other optical components can be integrated between the objective and tube lens. Use the 10mm Mitutoyo to C-mount adapter to connect infinity corrected objectives to the MT-1/MT-2 and MT-L/MT-L4 C-mount adapter or other [C-mount components](#).

**Note:** When using Mitutoyo objectives with RMS components, use only devices designed for similar conjugates. The four socket head cap screws must be removed to place the tube lens within the Mitutoyo MT-1/MT-2 and MT-L/MT-L4 C-Mount Adapters.

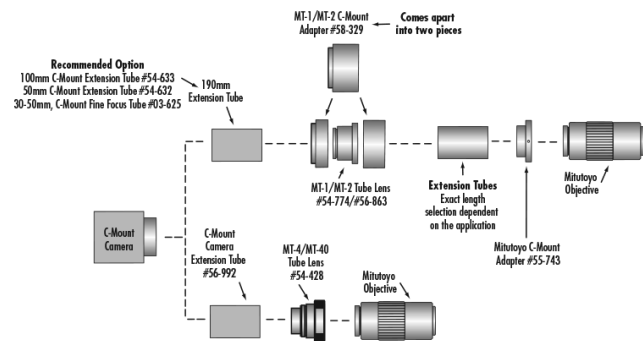
## Technical Information



Max. Thickness of Compatible Optics (mm): 9

Min. Thickness of Compatible Optics (mm): 3

#56-993 - Mitutoyo Filter Holder (above image)



Dimensions		
Compatible with	Overall Size (Dia. x L)	Required Tube Length (A)
Mitutoyo MT-1/MT-2	50 x 42mm	190mm
Mitutoyo MT-L/MT-L4	50 x 40.4mm	150mm
Mitutoyo MT-4/MT-40	30 x 152.5mm	0mm
Olympus WF (#36-401)	56 x 47.8mm	123mm
Nikon (#58-520)	50 x 37.7mm	130mm