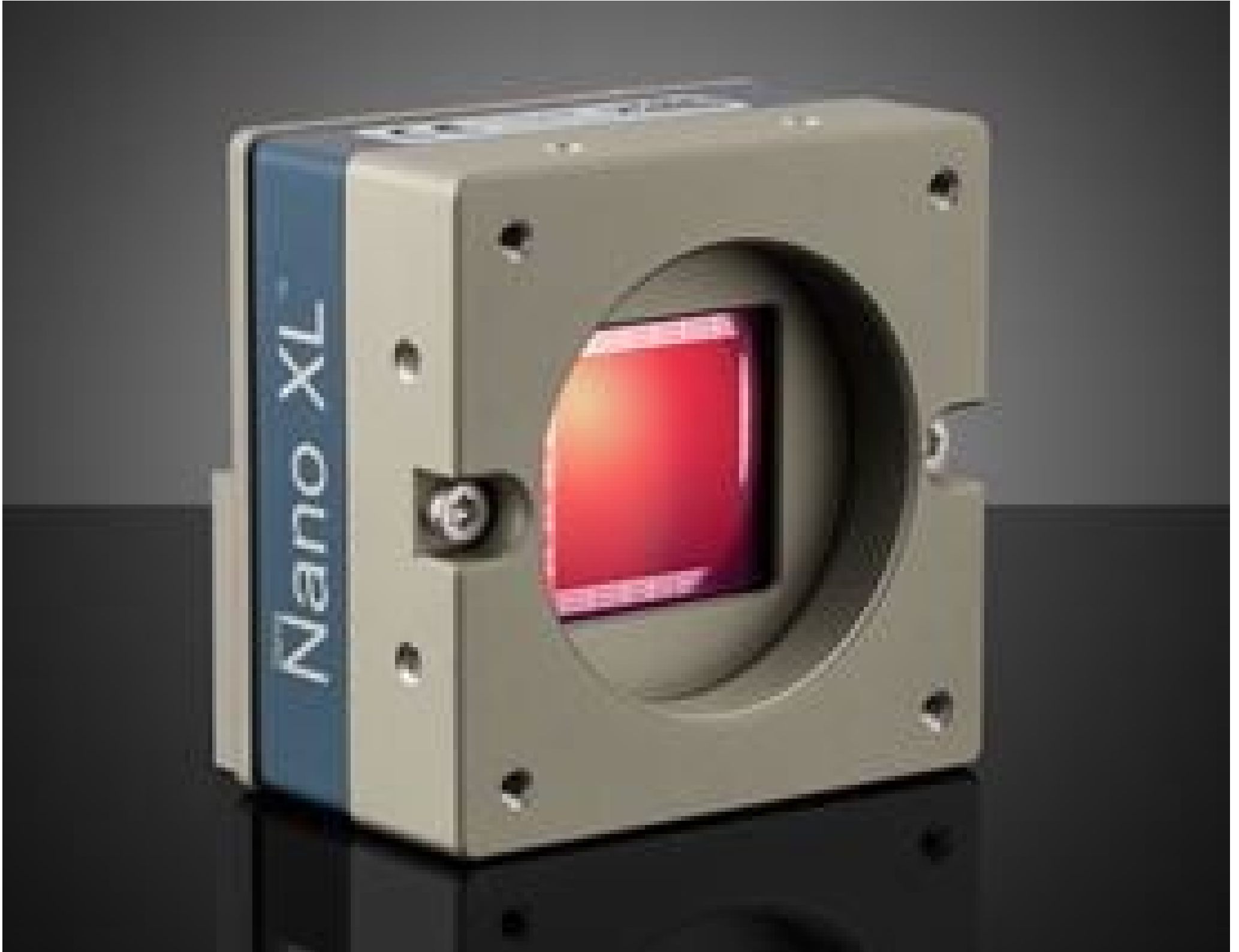


[See all 14 Products in Family](#)

## M6205, 1.4" Monochrome, Teledyne DALSA Genie Nano 10GigE PoE Camera

See More by [Teledyne DALSA](#)



Teledyne DALSA Genie™ Nano 10GigE Cameras - Front



Stock #28-678 **1 In Stock**

MRP ₹6,02,154

● Price inclusive of all taxes

**ADD TO CART**

### Volume Pricing

Qty 1+	₹6,02,154 each
Need More?	<a href="#">Request Quote</a>

### Product Downloads

Monochrome

Spectrum:

### General

Monochrome Camera

Type:

G6-GM31-M6205

Model Number:

Teledyne DALSA **Manufacturer:**

Genie Nano-10GigE **Camera Series:**

## Physical & Mechanical Properties

59 x 59 x 41 (excludes connectors and lens mount) **Dimensions (mm):**

183 **Weight (g):**

Full **Housing:**

## Sensor

1.4" **Sensor Format:**

37.70 **Resolution (Megapixels):**

18.50 **Frame Rate (fps):**

6,144 x 6,144 **Pixels (H x V):**

2.50 x 2.50 **Pixel Size, H x V (µm):**

15.35 x 15.36 **Sensing Area, H x V (mm):**

Teledyne e2v Emerald 36M **Imaging Sensor:**

Progressive Scan CMOS **Type of Sensor:**

Global **Shutter Type:**

8/10 bit **Pixel Depth:**

Automatic, Programmable, or via External Trigger **Exposure Time:**

62.00 **Dynamic Range (dB):**

GigE Vision v2.0 **Machine Vision Standard:**

## Electrical

12.5 **Power Consumption (W):**

## Hardware & Interface Connectivity

10GigE (PoE) **Interface:**

5GigE, RJ45 with Screw Locks **Connector:**

**Power Supply:**  
Power Supply Required and Sold Separately.  
USA: [#88-063](#)  
Europe: [#88-063](#)  
Japan: [#88-063](#)  
Korea: Not Available  
China: [#88-063](#)

2 opto-isolated input, 3 opto-isolated output **GPIOs:**

Hardware Trigger (GPIO) or Software Trigger **Synchronization:**

Back Panel **Interface Port Orientation:**

6-pin Hirose (HR10) **GPIO Connector Type:**

## Threading & Mounting

M42-Mount **Mount:**

1/4-20 with Tripod Mount Adapter [#34-966](#) **Mounting Threads:**

## Environmental & Durability Factors

-20 to +60 **Operating Temperature (°C):**

**Storage Temperature (°C):**

## Regulatory Compliance

[Exempt](#) **RoHS 2015:**

[View](#) **Certificate of Conformance:**

[Contains SVHC\(s\)](#) **Reach 235:**

**Country of Origin:**  
Canada

**Imported By:**  
Edmund Optics India Private Limited  
267, Greystone Building, Second Floor,  
6th Cross Rd, Binnamangala,  
Stage 1, Indiranagar, Bengaluru,  
Karnataka, India 560038  
Phone: +91- 80-6845 0000

## Product Details

- Up to 67.10 MP Resolution with Framrates up to 18.50FPS
- Supports Trigger-to-Image Reliability (T2IR) Framework
- Compact (44 x 59 x 59mm), M42-Mount, Lightweight, and Robust All Metal Design



Teledyne  
Authorized  
Distributor

Teledyne DALSA Genie™ Nano 10GigE Cameras are designed with the 10GBASE-T (10GigE) Ethernet Interface and can also run at ethernet link speeds of 1, 2.5, or 5GigE. These M42-mount cameras are available with either the Teledyne e2v Emerald 36M sensor featuring a 1.4" format or the Teledyne e2v Emerald 67M sensor which features an APS-C format. Genie™ Nano cameras support Sopera LT SDKs and 3rd Party GenICam compliant SDKs allowing for upgrading current systems without changing application software. Teledyne DALSA Genie™ Nano 10GigE Cameras support the Trigger-to-Image Reliability (T2IR) framework which is a combination of hardware and software features that work together at a system level to help improve the reliability and reduce the downtime of imaging systems. These cameras are ideal for applications involving Electronics Manufacturing Inspection, Intelligent Traffic Systems, and Aerial Imaging.

**Sopera LT** is a free image acquisition and control software development toolkit (SDK) for Teledyne DALSA'S 1D cameras / 2D cameras / 3D Laser Profiler cameras and frame grabbers. Hardware independent in nature, Sopera LT offers a rich development ecosystem for machine vision OEMs and system integrators. Sopera LT supports image acquisition from cameras and frame grabbers based on machine vision standards including GigE Vision™, CameraLink®, CameraLink HS™, CoaXpress®, and USB3 Vision™.