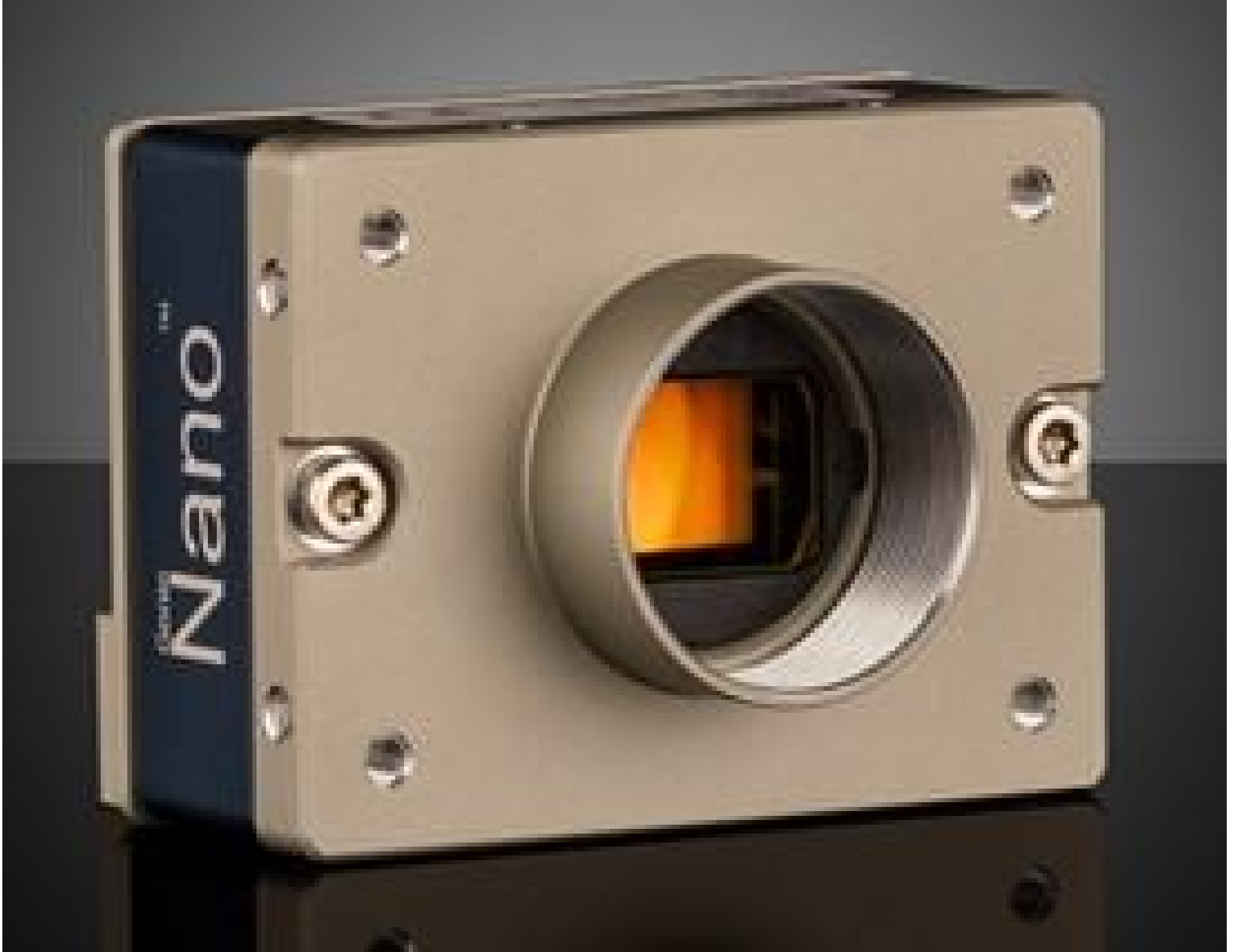


[See all 22 Products in Family](#)

M2450, 2/3" Monochrome, Teledyne DALSA Genie Nano 5GigE PoE Camera

See More by [Teledyne DALSA](#)



Teledyne DALSA Genie™ Nano 5GigE Cameras (Front)



Stock #16-026 **1 In Stock**

[Similar Cameras](#)

1 MRP ₹1,93,815

● Price inclusive of all taxes

ADD TO CART

Volume Pricing

Qty 1+	₹1,93,815 each
Need More?	Request Quote

Product Downloads

Spectrum:

Monochrome

General

Type:

Monochrome Camera

Model Number:

G5-GM30-M2450

Teledyne DALSA
Genie Nano-5GigE

Manufacturer:
Camera Series:

Physical & Mechanical Properties

59 x 44 x 42.6 (includes connectors and lens mount)

Dimensions (mm):

124

Weight (g):

Full

Housing:

Sensor

450MB

Image Buffer:

2/3"

Sensor Format:

5.10

Resolution (Megapixels):

121.00

Frame Rate (fps):

2,464 x 2,056

Pixels (H x V):

3.45 x 3.45

Pixel Size, H x V (µm):

8.5 x 7.09

Sensing Area, H x V (mm):

Sony IMX250

Imaging Sensor:

Progressive Scan CMOS

Type of Sensor:

Global

Shutter Type:

8 bit

Pixel Depth:

Automatic, Programmable, or via External Trigger

Exposure Time:

76.46

Dynamic Range (dB):

GigE Vision v2.0

Machine Vision Standard:

Electrical

9.4 - 9.6

Power Consumption (W):

Hardware & Interface Connectivity

5GigE (PoE)

Interface:

5GigE, RJ45 with Screw Locks

Connector:

Power over Ethernet (PoE) or via GPIO

Power Supply:

2 digital input, 3 digital output

GPIOs:

Hardware Trigger (GPIO), Software Trigger, Free-Run, or PTP (IEEE 1588)

Synchronization:

Back Panel

Interface Port Orientation:

10-pin Samtec

GPIO Connector Type:

Threading & Mounting

C-Mount

Mount:

¼-20 with Tripod Mount Adapter [#34-966](#)

Mounting Threads:

Environmental & Durability Factors

-20 to +65

Operating Temperature (°C):

-40 to +80

Storage Temperature (°C):

Regulatory Compliance

Certificate of Conformance:

[View](#)

Country of Origin:

Canada

Imported By:

Edmund Optics India Private Limited
267, Greystone Building, Second Floor,
6th Cross Rd, Binnamangala,
Stage 1, Indiranagar, Bengaluru,
Karnataka, India 560038
Phone: +91- 80-6845 0000

Product Details

- 5GBASE-T (5GigE) Ethernet Interface
- 3.2 to 12.4 Megapixel Sensors
- TurboDrive™ Technology for Data Transfer Speeds up to 985 MB/s
- Compact (32 x 44 x 59mm), Lightweight, and Robust Design



Teledyne
Authorized
Distributor

Teledyne DALSA Genie™ Nano 5GigE Cameras are available with a range of SONY Pregius sensors with resolutions from 3.2MP to 12.4MP. The 5GigE Ethernet interface provides data transfer speeds up to 5 times faster than the conventional GigE interface, which when combined with TurboDrive™ technology allows these cameras to achieve frame rates up to 187fps while retaining full image quality. The included Sapera CamExpert software provides a simple image acquisition interface with Sapera LT SDK libraries for OEM and system integration applications. Teledyne DALSA Genie™ Nano 5GigE Cameras are packaged in a compact, lightweight and robust all-metal housing, making them ideal for electronics inspection, industrial automation, and Intelligent Traffic Systems (ITS) applications. These cameras support the AIA GigE Vision Standard to facilitate easy integration into imaging systems.

Note: Frame rates achievable through TurboDrive™ or Burst Acquisition could vary with factors such as image quality and resolution.

Sapera LT is a free image acquisition and control software development toolkit (SDK) for Teledyne DALSA'S 1D cameras / 2D cameras / 3D Laser Profiler cameras and frame grabbers. Hardware independent in nature, Sapera LT offers a rich development ecosystem for machine vision OEMs and system integrators. Sapera LT supports image acquisition from cameras and frame grabbers based on machine vision standards including GigE Vision™, CameraLink®, CameraLink HS™, CoaXpress®, and USB3 Vision™.