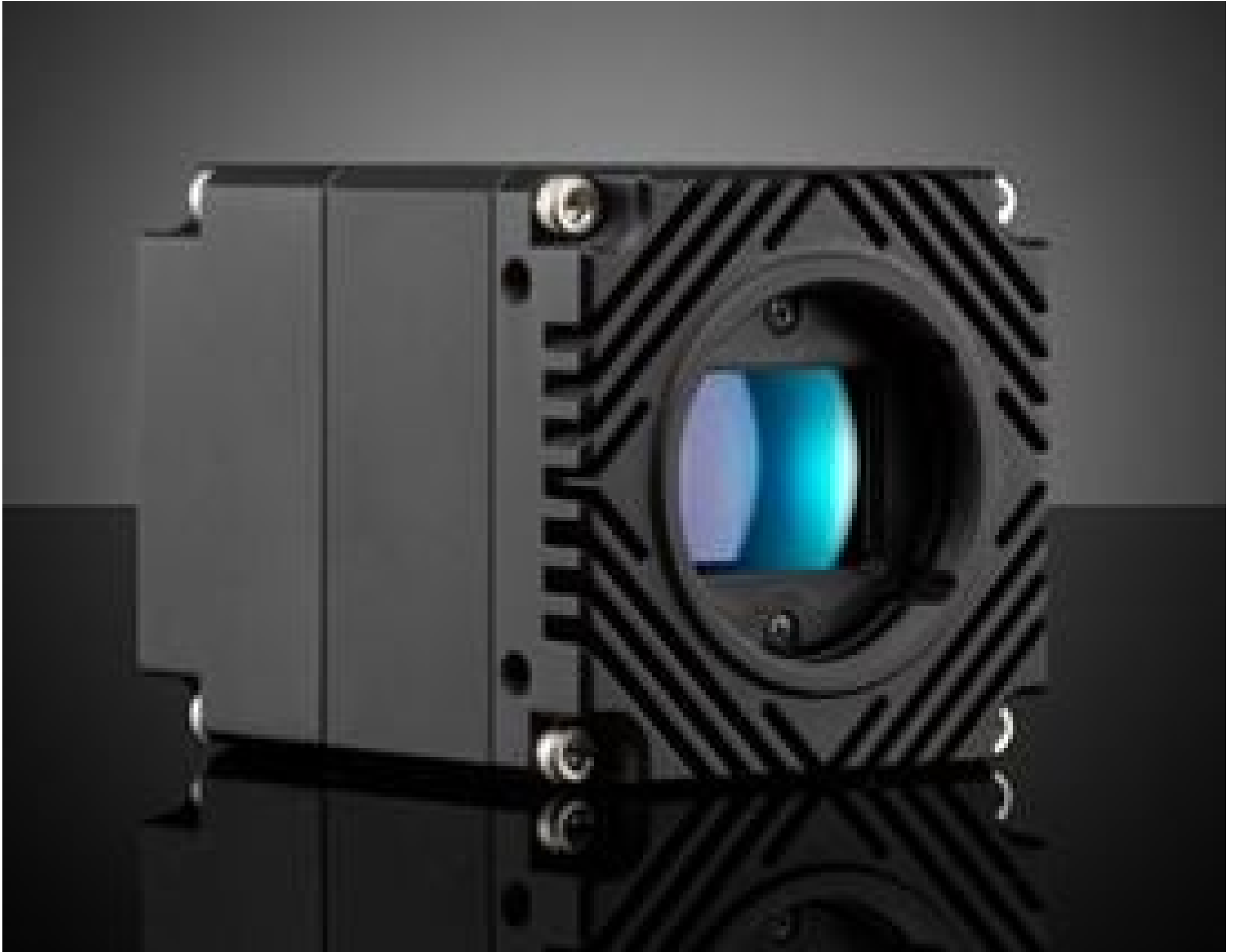


# LUCID Vision Labs Atlas™ ATL314S-MT, Sony IMX342, 31.4MP, Monochrome Camera

See More by [LUCID Vision Labs™](#)



LUCID Vision Labs Atlas™ Power over Ethernet (PoE) 5GBASE-T (5GigE) Cameras

Stock #13-727 10 TO 12 DAYS

₹5,69,415

[ADD TO CART](#)

Qty 1+	₹5,69,415
Volume Pricing	<a href="#">Request Quote</a>

### Get Product Downloads

<b>Video Output:</b> 5GigE (PoE)
<b>Type:</b> Monochrome Camera
<b>Manufacturer:</b> Lucid Vision Labs
<b>Mounting Threads:</b> 1/4-20 with Tripod Mount Adapter <a href="#">#13-751</a>

**Image Buffer:**  
380MB

**Camera Family:**  
Atlas™

**Model Number:**  
ATL314S-MT

**Imaging Sensor:**  
Sony IMX342

**Type of Sensor:**  
Progressive Scan CMOS

**Type of Shutter:**  
Global

**Camera Sensor Format:**  
APS-C

**Resolution (MegaPixels):**  
31.40

**Pixels (H x V):**  
6,464 x 4,852

**Pixel Size, H x V (µm):**  
3.45 x 3.45

**Sensing Area, H x V (mm):**  
22.3 x 16.74

**Frame Rate (fps):**  
17.90

**Pixel Depth:**  
8/10/12 bit

**Exposure Time:**  
30µs - 10s

**Connector:**  
5GigE, M12

**Power Supply:**  
Power Supply Required and Sold Separately.  
USA: [#18-364](#)  
Europe: [#18-364](#)  
Japan: [#18-364](#)  
Korea: Not Available  
China: [#18-364](#)

**Power Consumption (W):**  
8 (External Power Supply)  
8.5 (PoE)

**GPIOs:**  
1 opto-isolated input, 1 opto-isolated output, 2 non-isolated bi-directional ports

**Synchronization:**  
Hardware Trigger (GPIO), Software Trigger, or PTP (IEEE 1588)

**Dimensions (mm):**  
55 x 55 x 70 (excludes connectors and lens mount)

**Weight (g):**  
240

**Mount:**  
TFL-Mount

**Housing:**  
Full

**Interface Port Orientation:**  
Back Panel

**Dynamic Range (dB):**  
70.8

**Operating Temperature (°C):**  
-20 to +55

**Storage Temperature (°C):**  
-30 to +60

**GPIO Connector Type:**  
8-pin MB

**Machine Vision Standard:**  
GigE Vision v2.0

## Regulatory Compliance

**RoHS:**  
[Compliant](#)

**Certificate of Conformance:**  
[View](#)