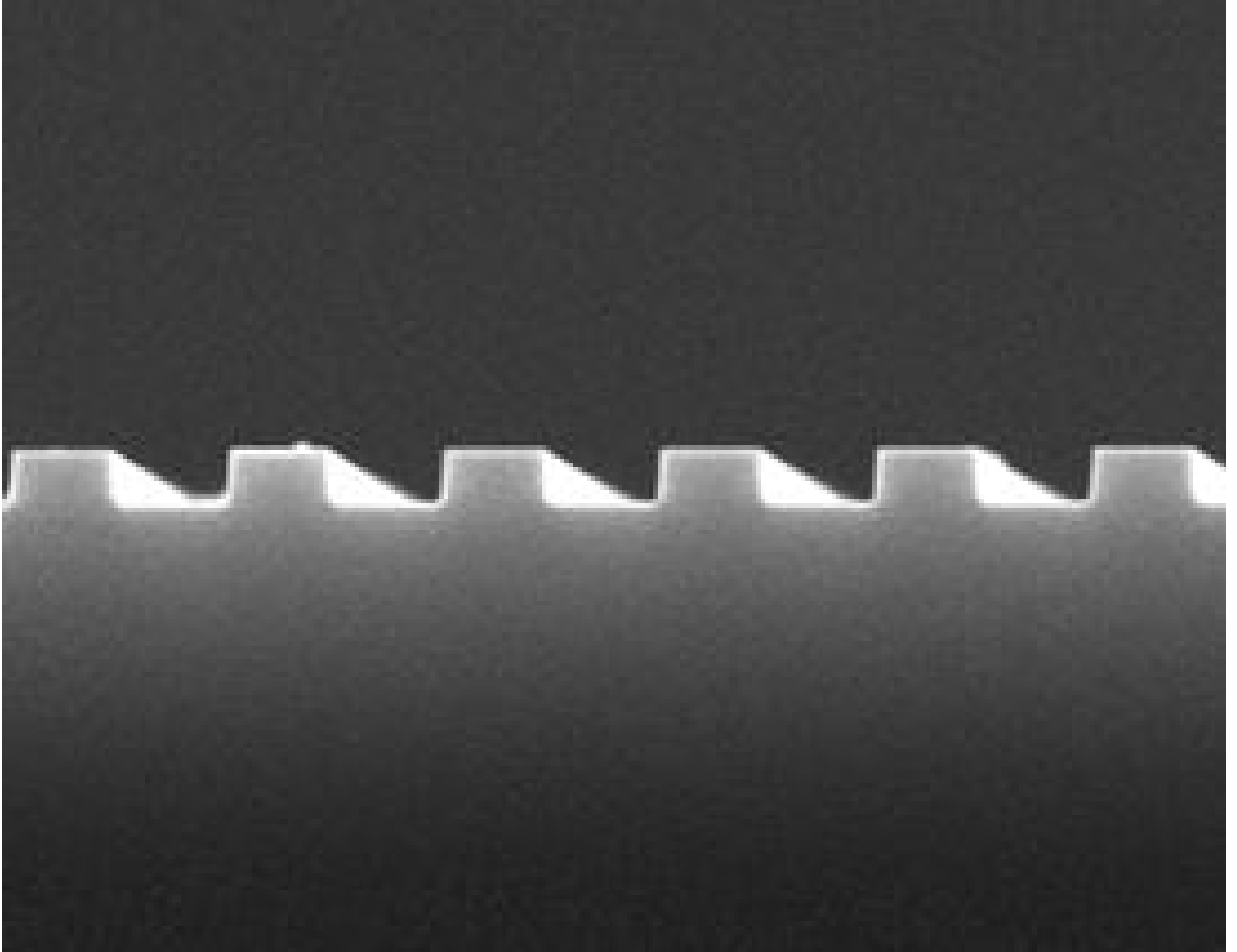


[See all 2 Products in Family](#)

Coherent® LightSmyth™ 139nm, 50nm Groove Depth, 12.5mm Sq. Linear Silicon Nanostamp

See More by [Coherent®](#)



Stock #16-857 **1 In Stock**

1 MRP ₹86,262

Price inclusive of all taxes

ADD TO CART

Volume Pricing	
Qty 1-9	₹86,262 each
Qty 10-24	₹77,635 each
Need More?	Request Quote

Product Downloads

General

1304117 **Model Number:**

Nanopatterned Silicon Stamp **Type:**

Physical & Mechanical Properties

139 ±6.95	Period (nm):
50 ±7.5	Groove Depth (nm):
70 ±7	Line Width (nm):
12.50 x 12.50	Dimensions (mm):
11.50 x 11.50	Clear Aperture CA (mm):
RIE Grating	Construction:
12.50	Length (mm):
0.68 ±0.05	Thickness (mm):
12.50	Width (mm):

Optical Properties

Uncoated	Coating:
Single Crystal Silicon	Substrate: <input type="checkbox"/>
60-40 (within CA)	Surface Quality:

Regulatory Compliance

View	Certificate of Conformance:
United States	Country of Origin:
Edmund Optics India Private Limited 267, Greystone Building, Second Floor, 6th Cross Rd, Binnamangala, Stage 1, Indiranagar, Bengaluru, Karnataka, India 560038 Phone: +91- 80-6845 0000	Imported By:

Need different specs or modifications?

Edmund Optics offers comprehensive custom manufacturing services for optical and imaging components tailored to your specific application requirements. Whether in the prototyping phase or preparing for full-scale production, we provide flexible solutions to meet your needs. Our experienced engineers are here to assist—from concept to completion.

Our capabilities include:

- Custom dimensions, materials, coatings, and more
- High-precision surface quality and flatness
- Tight tolerances and complex geometries
- Scalable production—from prototype to volume

Learn more about our [custom manufacturing capabilities](#) or submit an inquiry [here](#).

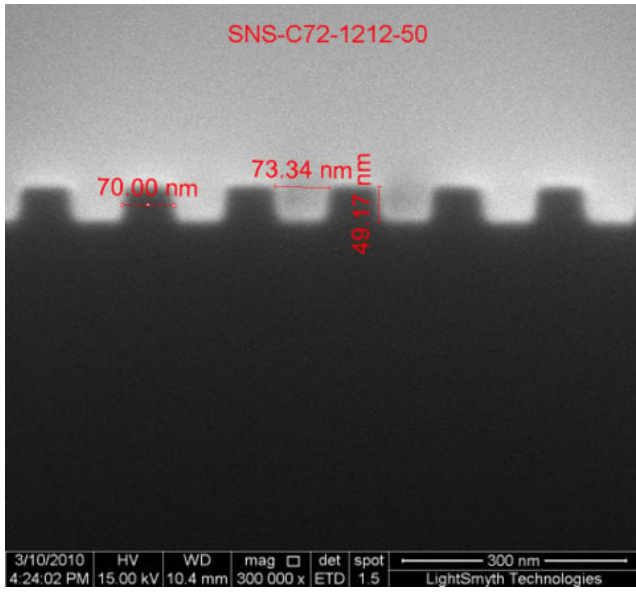
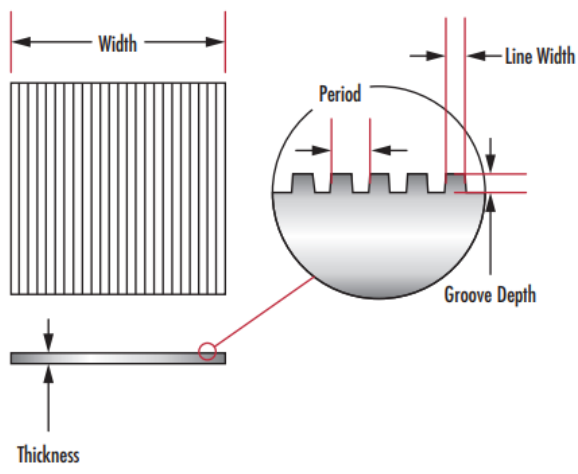
Product Details

- Nanoscale-Textured Grooved Surfaces
- Variable Groove Period and Groove Depth
- Ideal for Nanophotonics Research Applications

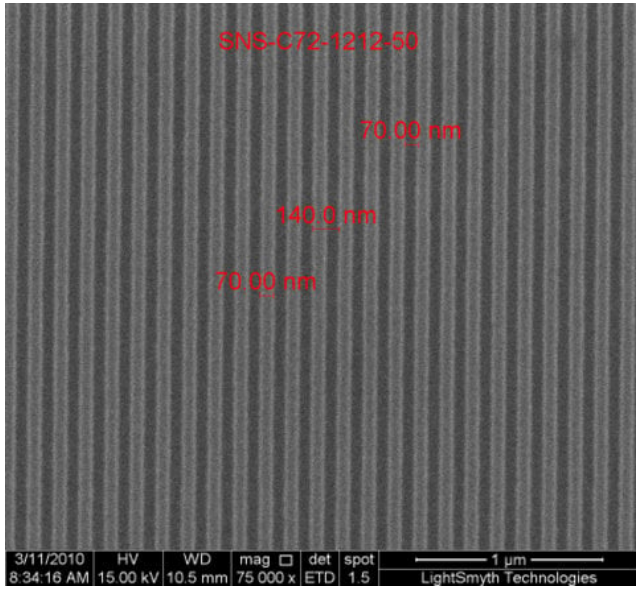
Coherent® LightSmyth™ Nanopattern Silicon Stamps consist of nanoscale-textured surfaces patterned on single-crystal silicon substrates. Through reactive ion etching, linear grooves with a trapezoidal cross-section are etched into the substrate surface, resembling conventional gratings. The etching process enables different period and depth specifications for these grooves, as well as more complex patterns such as lattices. Coherent® LightSmyth™ Nanopattern Silicon Stamps are ideal for nanophotonics research applications in the fields of optics and photonics, biology, chemistry, nanoimprinting, and microfluidics.

Note: II-VI Incorporated is now Coherent Corp.

Technical Information



SEM Image of 139nm, 50nm Groove Depth Linear Silicon Nanostamps (Cross Section)



SEM Image of 139nm, 50nm Groove Depth Linear Silicon Nanostamps (Top Down)

Special Handling

These optics require special handling to avoid damage and ensure long-term performance. Proper handling, cleaning, and storage are essential to maintain optical quality. Explore our [Optics Cleaning Resources](#) for step-by-step guides and best practices. For personalized assistance, [Email us](#) or [Chat](#) with our technical support team.



Component Handling Tools