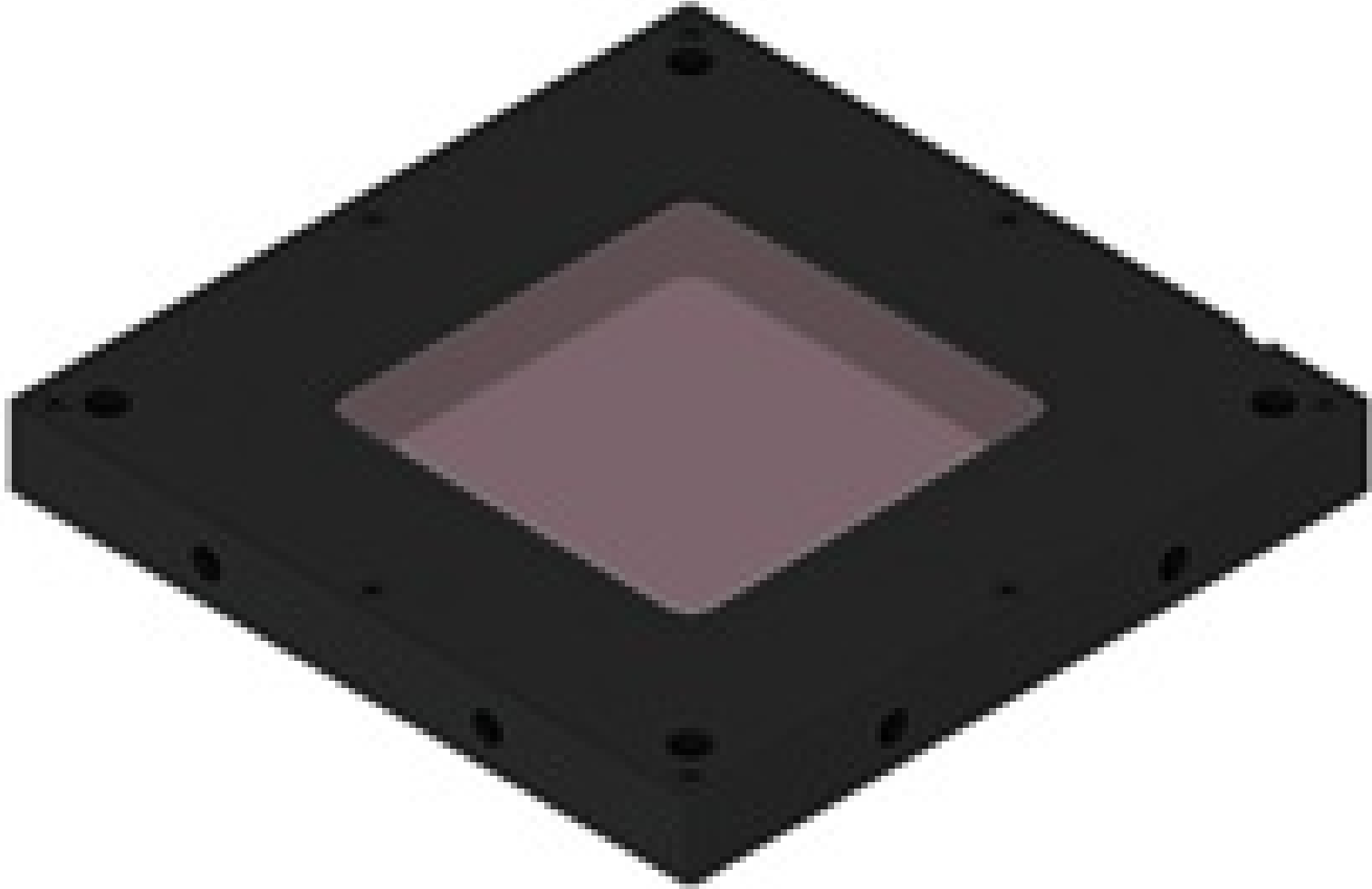


Flat Dome Light LFXV-50IR860

See More by [CCS](#)



Stock #19-964 **1 In Stock**

1 MRP ₹2,16,117

Price inclusive of all taxes

ADD TO CART

Volume Pricing

Qty 1+	₹2,16,117 each
Need More?	Request Quote

Product Downloads

General

Model Number:
LFXV-50IR860

Type of Illumination:
LED Illuminator

Manufacturer:
CCS

Geometry:
Flat Dome Light

Illumination Mode:

Constant

Physical & Mechanical Properties

93 x 93 x 10 **Dimensions (mm):**

190 **Weight (g):**

50 x 50 **Active Area (mm):**

Optical Properties

IR **Color:**

855 **Wavelength (nm):**

Electrical

5.7 **Power Consumption (W):**

Hardware & Interface Connectivity

24 **Input Voltage (V):**

Power Supply:
Power Supply Required and Sold Separately.
USA: [#73-491](#)
Europe: [#73-491](#)
Japan: [#89-513](#)
Korea: [#33-773](#)
China: [#73-491](#)

Regulatory Compliance

[View](#) **Certificate of Conformance:**

Japan **Country of Origin:**

Imported By:
Edmund Optics India Private Limited
267, Greystone Building, Second Floor,
6th Cross Rd, Binnamangala,
Stage 1, Indiranagar, Bengaluru,
Karnataka, India 560038
Phone: +91- 80-6845 0000

Product Details

- Thin, Compact, and Lightweight Housing
- Available in Multiple LED Colors
- Wide Range of Sizes Including Square and Rectangular Shapes

CCS Flat Dome Lights are ideal for achieving illumination similar to Coaxial or Dome Lights in a lighter, more compact unit. While standard dome lights are good for creating a diffuse lighting environment that minimizes specular reflection, their mechanical size and imaging aperture through a small hole on top limit their use in compact applications. These flat dome lights provide the same diffuse illumination environments as a standard dome light but in a 10mm thick, flat housing with a large imaging area, greatly increasing the options for working distance, depth of focus, and field of view. CCS Flat Dome Lights can also be used at long working distances to recreate the illumination environment of a coaxial light, which is used to reduce shadowing and has minimal glare. This flexibility makes these flat dome lights suitable for a wide range of industrial and imaging applications, particularly when imaging textured, shiny, or uneven surfaces.

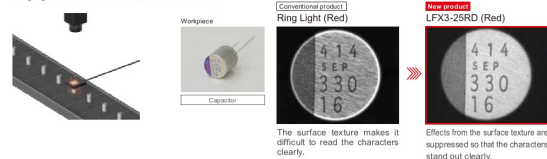
Technical Information

Imaging Examples

Introducing various examples using unique characteristics of the Flat Dome Lights

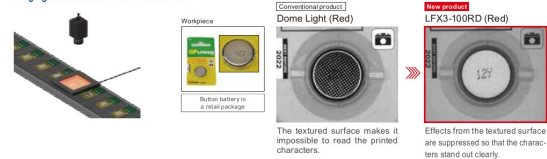
Electronic Components Industry

Imaging Characters on a Textured Metal Surface



Electronic Components Industry

Imaging Characters on Button Batteries



Packaging Industry

Imaging Shrink Film of Containers



