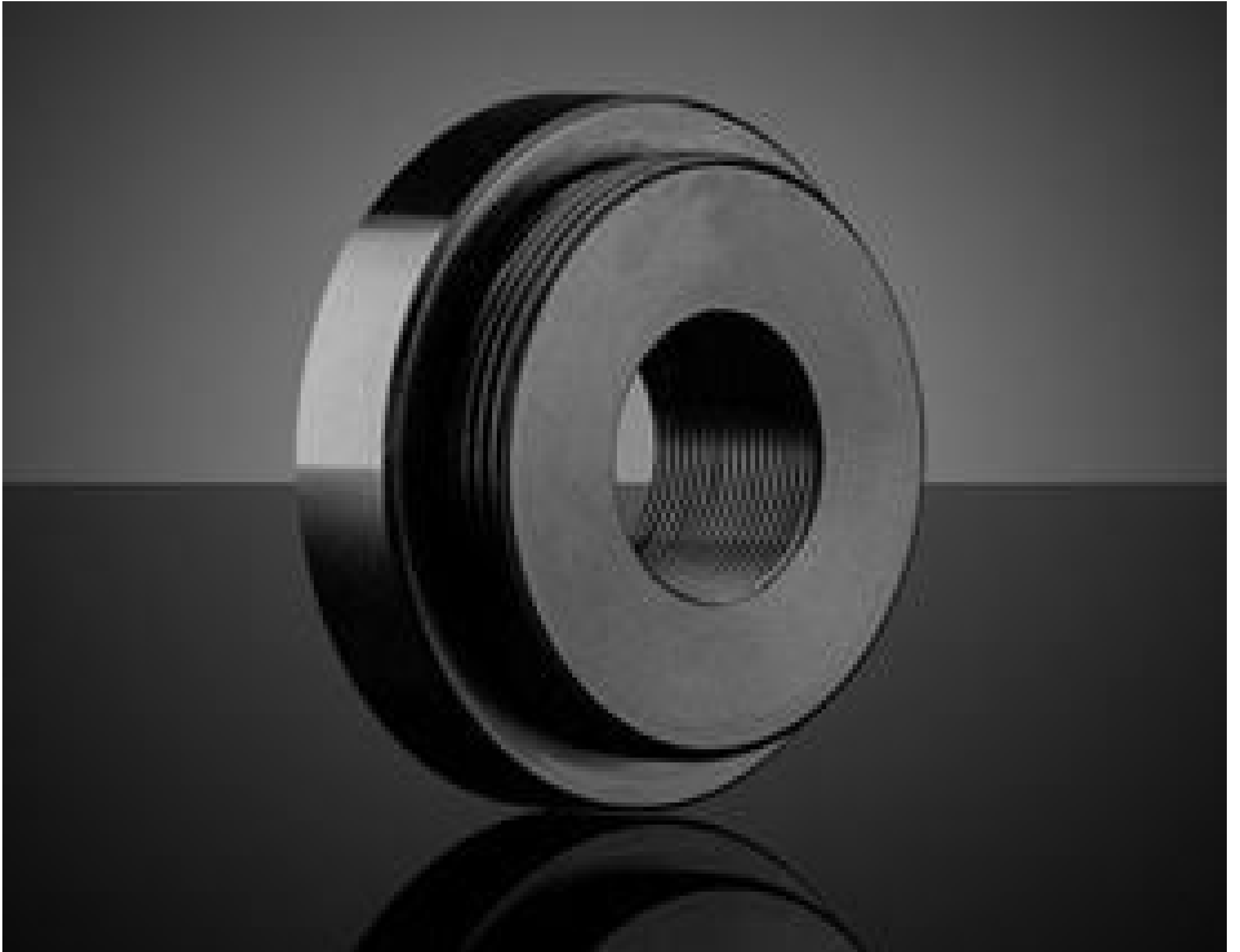


[See all 10 Products in Family](#)

TECHSPEC® S-Mount Female to C-Mount Male Step-Down Adapter



Female S to Male C Adapter, #63-945

Stock **#63-945** **20+ In Stock**

⊖ 1 ⊕ MRP ₹6,003

● Price inclusive of all taxes

ADD TO CART

Volume Pricing	
Qty 1-4	₹6,003 each
Qty 5-9	₹5,348 each
Qty 10-25	₹4,944 each
Need More?	Request Quote

Product Downloads

Thread Adapter	Type:
30.0	Outer Diameter (mm):
S-Mount to C-Mount	Thread Type:
Female to Male	Thread Termination:

12.0	Clear Aperture CA (mm):
10.0	Total Length (mm):
6.0	Extension Length (mm):
Black Anodized Aluminum (6061-T6)	Construction:
Thread Adapter	Function:

Regulatory Compliance

Compliant	RoHS 2015:
View	Certificate of Conformance:
Compliant	REACH 241:
China	Country of Origin:
Edmund Optics India Private Limited 267, Greystone Building, Second Floor, 6th Cross Rd, Binnamangala, Stage 1, Indiranagar, Bengaluru, Karnataka, India 560038 Phone: +91- 80-6845 0000	Imported By:

Product Details

- Adapt All Available Tube System Thread Types to One Another
- Low Profile Design to Minimize Extension Length
- Black Anodized Aluminum Construction

TECHSPEC® C, S, and T-Mount Thread Adapters ensure that all [Tube System](#) thread types are compatible with one another. This includes C, S, and T-Mount threads, TECHSPEC Multi-Element Tube System threads (M29 x 0.75), ID1 (1.035" x 40 TPI, equivalent to SM1 thread specifications), and ID05 (0.535" x 40 TPI, equivalent to SM05 thread specifications). All thread adapters have a low-profile design to minimize extension length. They also have a black anodized aluminum construction to ensure minimal reflections within a system. TECHSPEC C, S, and T-Mount Thread Adapters are ideal for system expansion and work with any optical component that uses the supported thread types.