

English Post Pivot Base



Stock #53-355 **15 In Stock**

- 1 + MRP ₹2,321

Price inclusive of all taxes

ADD TO CART

Volume Pricing	
Qty 1-9	₹2,321 each
Qty 10+	₹2,078 each
Need More?	Request Quote

Product Downloads

General

English **Type:**

Includes 1/4-20 Cap Screws **Note:**

English Type (1/4-20) **Compatible Post Holder:**

Physical & Mechanical Properties

Length (mm):

47.80

19.10

Width (mm):

Thickness (mm):

9.50

Construction:

Black Anodized Aluminum

Regulatory Compliance

RoHS 2015:

[Compliant](#)

Reach 224:

[Compliant](#)

Certificate of Conformance:

[View](#)

Country of Origin:

China

Imported By:

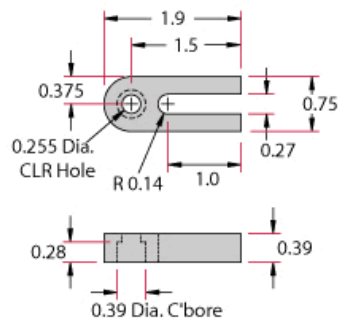
Edmund Optics India Private Limited
267, Greystone Building, Second Floor,
6th Cross Rd, Binnamangala,
Stage 1, Indiranagar, Bengaluru,
Karnataka, India 560038
Phone: +91- 80-6845 0000

Product Details

- Slot Adjustment Range of 1.00"

The narrow slotted mounting base is used for the positioning of 0.5" dia. stainless steel posts and post holder assemblies. The post/post holder is attached to the base via a counterbored clearance hole with a 1/4-20 socket screw. The base is held in place with another socket screw in the slot. The slot length allows the post to be centered at the mid-point laterally or at 45° on a 1" center hole breadboard. Anodized aluminum.

Technical Information



Units: Inches