

Deluxe Adjustable 1/4-20 Mounting Plate



Deluxe Adjustable 1/4-20 Mounting Plate, #54-123

Stock #54-123 **CLEARANCE** 2 In Stock

- 1 + MRP ₹74,155

Price inclusive of all taxes

ADD TO CART

Volume Pricing

Qty 1+	₹74,155 each
Need More?	Request Quote

Product Downloads

General

Mounting Adapter **Type:**
19.05 (3/4") **Compatible Post Diameter (mm):**

Physical & Mechanical Properties

3.8 L x 2.52 W x 1.5 T **Dimensions (inches):**

96.52 L x 64.008 W x 38.1 T **Length (inches):**

2.00 **Travel (inches):**

Threading & Mounting

$\frac{1}{4}$ -20 **Mounting Threads:**

Regulatory Compliance

[View](#) **Certificate of Conformance:**

United States **Country of Origin:**

Imported By:
Edmund Optics India Private Limited
267, Greystone Building, Second Floor,
6th Cross Rd, Binnamangala,
Stage 1, Indiranagar, Bengaluru,
Karnataka, India 560038
Phone: +91-80-6845 0000

Product Details

- Standard and Deluxe Versions Available
- $\frac{1}{4}$ -20 Mounting
- Compatible with our Most Popular Line of Boom Stands

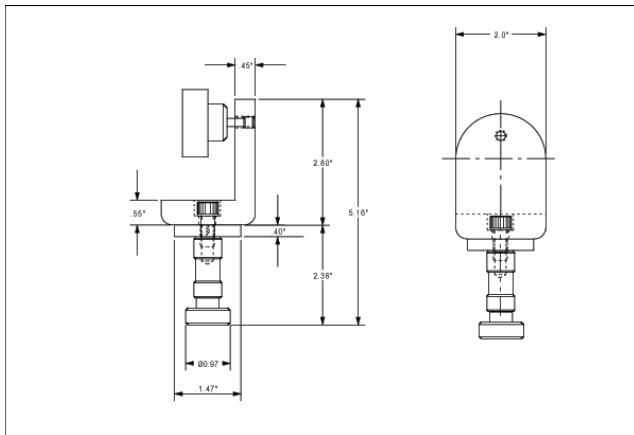
[#54-122](#) adapter can be used to mount a wide variety of cameras, lenses, microscopes, and lighting. Components are easily mounted via its $\frac{1}{4}$ -20 mounting screw. 2.8" L x 2.0" W x 0.45" T.

[#54-123](#) deluxe version of the base plate has the same $\frac{1}{4}$ -20 screw type, but includes a rack and pinion movement with tilt adjustment. The rack and pinion has a 2" travel. 3.8" L x 2.52" W x 1.5" T.

[#54-124](#) post adapter can be used to attach mounts designed to fit on $\frac{3}{4}$ inch posts. Allows tilt adjustment. This is required to mount our 68mm ([#39-357](#)) and 50mm ([#03-609](#)) thru-hole rack and pinions and our [1/4-20 movements](#). Adapter is 7" long. Post 4" long x 0.75" O.D.

All adapters are compatible with the following boom stands: [Articulating Arm Boom Stand](#), [Standard Boom Stand](#), and [Ball Bearing Boom Stand](#).

Technical Information



#54-123