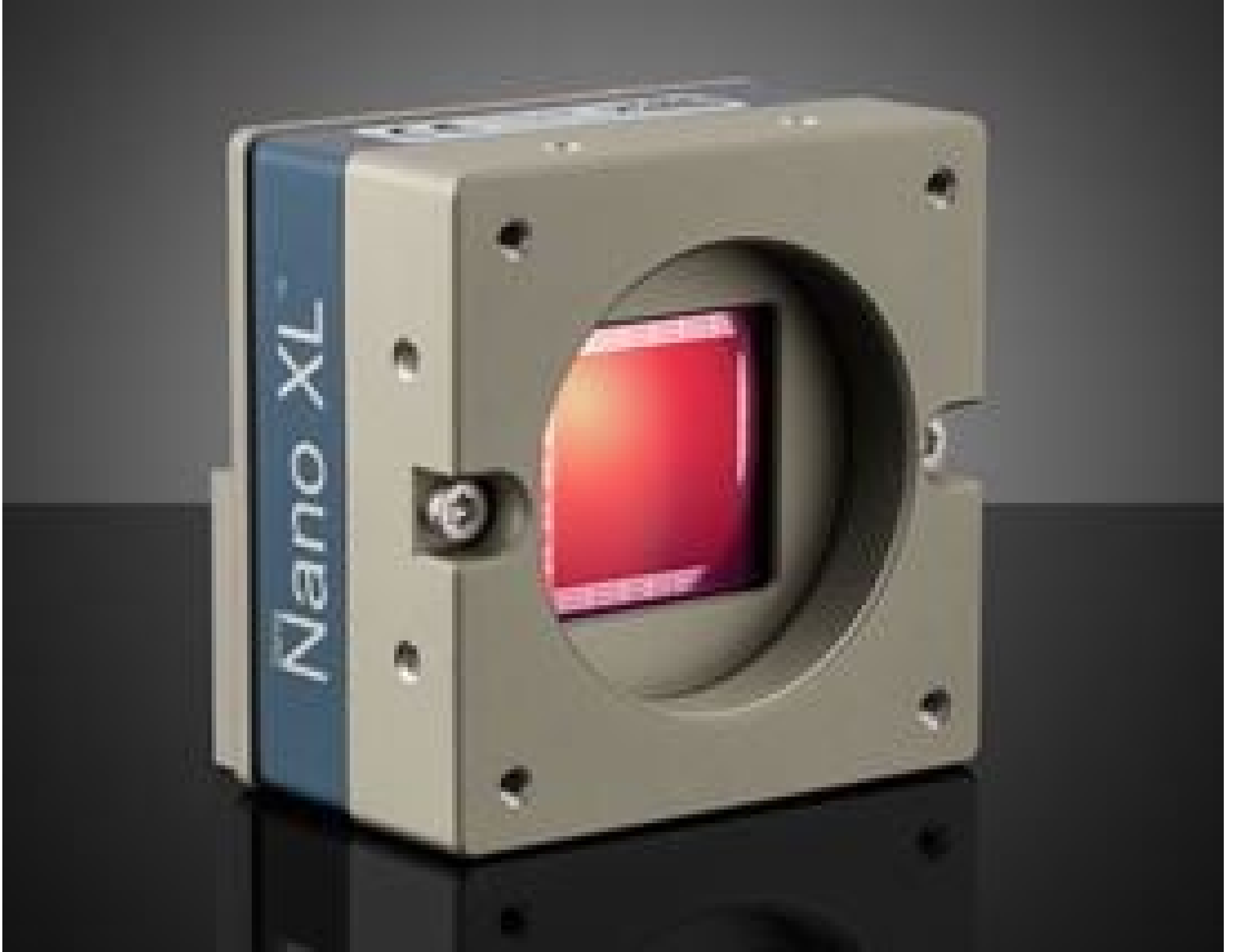


[See all 13 Products in Family](#)

C8205, APS-C Color, Teledyne DALSA Genie Nano 10GigE PoE Camera

See More by [Teledyne DALSA](#)



Teledyne DALSA Genie™ Nano 10GigE Cameras - Front



Stock #28-679 **4 In Stock**

MRP ₹7,46,586

! Price inclusive of all taxes

ADD TO CART

Volume Pricing

| | |
|------------|-------------------------------|
| Qty 1+ | ₹7,46,586 each |
| Need More? | Request Quote |

Product Downloads

Color **Spectrum:**

General

Color Camera **Type:**

G6-GC31-C8205 **Model Number:**

Teledyne DALSA
Genie Nano-10GigE

Manufacturer:
Camera Series:

Physical & Mechanical Properties

59 x 59 x 41 (excludes connectors and lens mount)

Dimensions (mm):

183

Weight (g):

Full

Housing:

Sensor

APS-C

Sensor Format:

67.10

Resolution (Megapixels):

13.80

Frame Rate (fps):

8,192 x 8,192

Pixels (H x V):

2.50 x 2.50

Pixel Size, H x V (µm):

20.48 x 20.48

Sensing Area, H x V (mm):

Teledyne e2v Emerald 67M

Imaging Sensor:

Progressive Scan CMOS

Type of Sensor:

Global

Shutter Type:

8/10 bit

Pixel Depth:

Automatic, Programmable, or via External Trigger

Exposure Time:

62.00

Dynamic Range (dB):

GigE Vision v2.0

Machine Vision Standard:

Electrical

12.5

Power Consumption (W):

Hardware & Interface Connectivity

10GigE (PoE)

Interface:

5GigE, RJ45 with Screw Locks

Connector:

2 opto-isolated input, 3 opto-isolated output

GPIOs:

Hardware Trigger (GPIO) or Software Trigger

Synchronization:

Back Panel

Interface Port Orientation:

6-pin Hirose (HR10)

GPIO Connector Type:

Threading & Mounting

M42-Mbunt

Mount:

¼-20 with Tripod Mount Adapter [#34-966](#)

Mounting Threads:

Environmental & Durability Factors

-20 to +60

Operating Temperature (°C):

-30 to +60

Storage Temperature (°C):

Regulatory Compliance

Exempt

RoHS 2015:

Certificate of Conformance:

[View](#)

| | |
|---|-------------------|
| Contains SVHC(s) | Reach 235: |
| Country of Origin: | |
| Canada | |
| Imported By: | |
| Edmund Optics India Private Limited 267, Greystone Building, Second Floor, 6th Cross Rd, Binnamangala, Stage 1, Indiranagar, Bengaluru, Karnataka, India 560038 Phone: +91- 80-6845 0000 | |

Product Details

- Up to 67.10 MP Resolution with Framerrates up to 18.50FPS
- Supports Trigger-to-Image Reliability (T2IR) Framework
- Compact (44 x59 x59mm), M42-Mbunt, Lightweight, and Robust All Metal Design



Teledyne
Authorized
Distributor

Teledyne DALSA Genie™ Nano 10GigE Cameras are designed with the 10GBASE-T (10GigE) Ethernet Interface and can also run at ethernet link speeds of 1, 2.5, or 5GigE. These M42-mount cameras are available with either the Teledyne e2v Emerald 36M sensor featuring a 1.4" format or the Teledyne e2v Emerald 67M sensor which features an APS-C format. Genie™ Nano cameras support Sapera LT SDKs and 3rd Party GenICam compliant SDKs allowing fo upgrading current systems without changing application software. Teledyne DALSA Genie™ Nano 10GigE Cameras support the Trigger-to-Image Reliability (T2IR) framework which is a combination of hardware and software features that work together at a system level to help improve the reliability and reduce the downtime of imaging systems. These cameras are ideal for applications involving Electronics Manufacturing Inspection, Intelligent Traffic Systems, and Aerial Imaging.

Sapera LT is a free image acquisition and control software development toolkit (SDK) for Teledyne DALSA'S 1D cameras / 2D cameras / 3D Laser Profiler cameras and frame grabbers. Hardware independent in nature, Sapera LT offers a rich development ecosystem for machine vision OEMs and system integrators. Sapera LT supports image acquisition from cameras and frame grabbers based on machine vision standards including GigE Vision™, CameraLink®, CameraLink HS™, CoaXpress®, and USB3 Vision™.

;