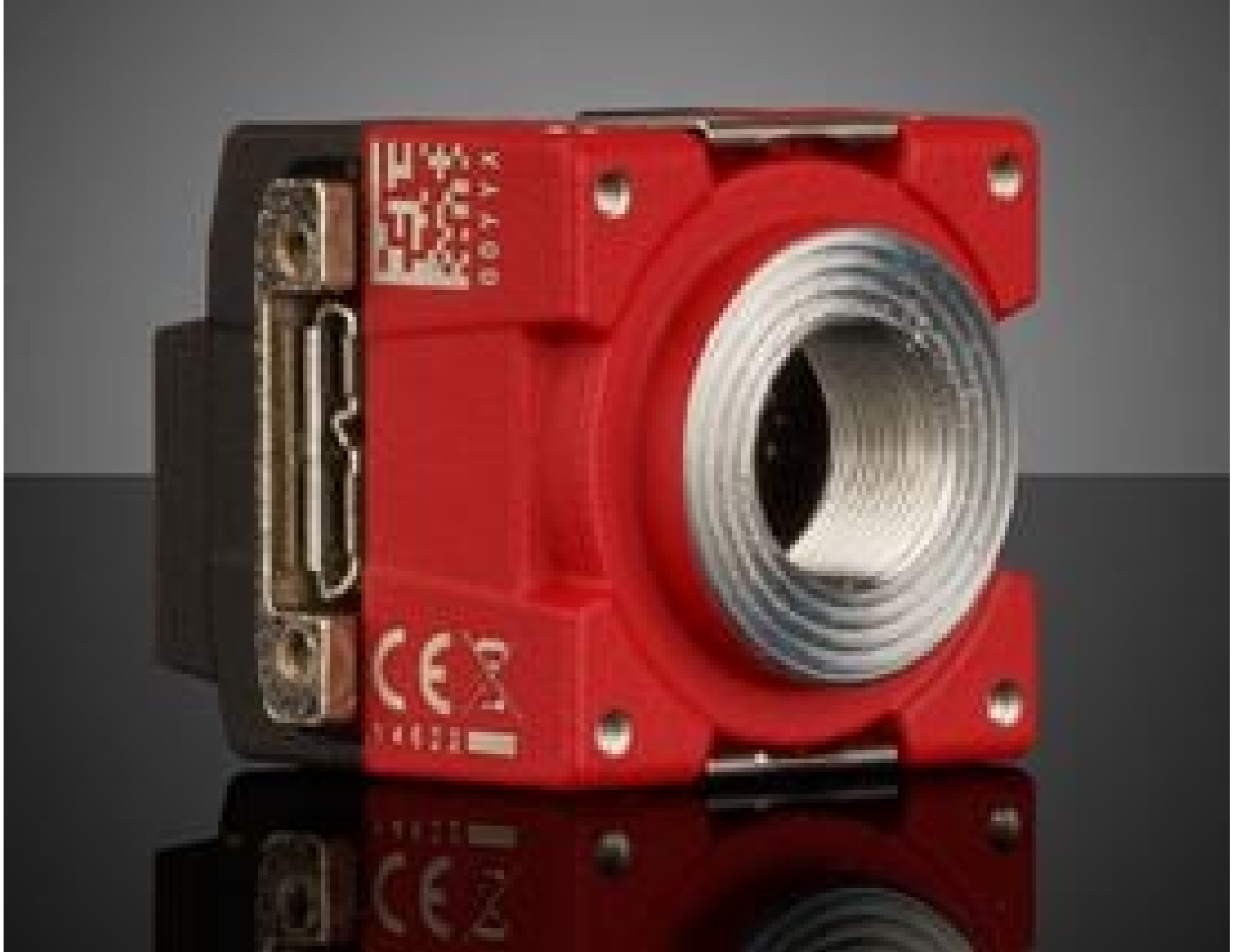


[See all 127 Products in Family](#)

Allied Vision Alvium 1800 U-291m, 2/3" 2.9MP CS-Mount, Right Angle USB 3.1 Monochrome Camera

See More by [Allied Vision](#)



Stock **#23-192** [CONTACT US](#)

[Similar Cameras](#)

- 1 + MRP ₹80,712

i Price inclusive of all taxes

ADD TO CART

Volume Pricing	
Qty 1+	₹80,712 each
Need More?	Request Quote

Note: This item requires accessories for use | [Learn More](#)

Product Downloads

Monochrome

Spectrum:

General

Monochrome Camera	Type:
1800 U-291m	Model Number:
Allied Vision	Manufacturer:
Alvium Right Angle	Camera Series:

Physical & Mechanical Properties

32 x 29 x 25 (includes connectors and lens mount)	Dimensions (mm):
50	Weight (g):
Full	Housing:

Sensor

256KB	Image Buffer:
2/3"	Sensor Format:
2.91	Resolution (Megapixels):
144.00	Frame Rate (fps):
1,944 x 1,472	Pixels (H x V):
4.5 x 4.5	Pixel Size, H x V (µm):
8.8 x 6.6	Sensing Area, H x V (mm):
Sony IMX421	Imaging Sensor:
Progressive Scan CMOS	Type of Sensor:
Global	Shutter Type:
8/10/12 Bit	Pixel Depth:
16µs - 10s	Exposure Time:
Not Specified	Dynamic Range (dB):
USB3 Vision v1.0, GenICam	Machine Vision Standard:

Electrical

4.00	Power Consumption (W):
------	-------------------------------

Hardware & Interface Connectivity

USB 3.1 Gen 1	Interface:
USB 3.1 Gen 1, Micro-B	Connector:
Power over USB or via GPIO	Power Supply:
4 Programmable TTL GPIOs	GPIOs:
Hardware Trigger (GPIO) or Software Trigger	Synchronization:
Back Panel (Right Angle)	Interface Port Orientation:
7-pin JST	GPIO Connector Type:

Threading & Mounting

CS-Mount	Mount:
1/4-20 and M6 with Tripod Mount Adapter #14-156	Mounting Threads:

Environmental & Durability Factors

	Operating Temperature (°C):
--	------------------------------------

+5 to +65

Storage Temperature (°C):

-10 to +70

Regulatory Compliance

[Compliant](#)

RoHS 2015:

[View](#)

Certificate of Conformance:

[Compliant](#)

Reach 240:

Germany

Country of Origin:

Imported By:

Edmund Optics India Private Limited
267, Greystone Building, Second Floor,
6th Cross Rd, Binnamangala,
Stage 1, Indiranagar, Bengaluru,
Karnataka, India 560038
Phone: +91- 80-6845 0000

Product Details

- Right Angle USB Port Orientation
- Compact, Low Cost, High Performance Design for Machine Vision and Embedded Applications
- ALVUM® System on Chip (SoC) Technology with Onboard Imaging Preprocessing
- [Allied Vision Alvium USB 3.1 Cameras](#) Also Available

Allied Vision Alvium Right Angle USB 3.1 Cameras feature ALVUM® System on Chip (SoC) technology and a right-angle USB port in a lightweight compact form factor, offering a comprehensive image processing library for advanced onboard image correction, preprocessing functions to relieve host computer and processor workload, and allow for easy system integration. In addition to smart camera operations, the unique SoC design also allows for low power consumption and ease of integration, making them ideal for next generation machine vision, robotics and embedded vision applications. The cameras feature a variety of popular Sony Pregius and On Semi CMOS sensors with high image quality, fast frame rate and USB3 Vision interface standard. The actively aligned lens mount minimizes inconsistency and variation. Allied Vision Alvium Right Angle USB 3.1 Cameras feature a 90° right angle USB port and are available in a variety of monochrome, color, and NIR configurations, including C-Mount, CS-Mount, and S-Mount. Full housing versions are best suited for prototyping, development and end user uses. Partial housing and board level configurations have exposed image sensor PCB without heat sinks to reduce space and facilitate system integration making them ideal for OEM embedded design.

Note: Board level versions do not have a lens mount.