

TECHSPEC® 76.6mm Dia x 849.9mm FL Achromatic Lens



Stock #30-976 **20+ In Stock**

⊖ 1 ⊕ ₹40,093

ADD TO CART

Volume Pricing	
Qty 1-5	₹40,093 each
Qty 6-25	₹34,098 each
Qty 26-49	₹32,074 each
Need More?	Request Quote

Product Downloads

SPECIFICATIONS

General

Achromatic Lens **Type:**

Physical & Mechanical Properties

76.56 +0.00/-0.08	Diameter (mm):
73.25	Clear Aperture CA (mm):
5.00	Centering (arcmin):
13.08	Center Thickness CT 1 (mm):
10.16	Center Thickness CT 2 (mm):
-1227.86	Radius R₄ (mm):
21.27	Edge Thickness ET (mm):
Unmounted, Airspaced 0.10mm	Construction:
Protective as needed	Bevel:

Optical Properties

849.96	Effective Focal Length EFL (mm):
±1	Focal Length Tolerance (%):
838.69	Back Focal Length BFL (mm):
587.6	Focal Length Specification Wavelength (nm):
497.21	Radius R₁ (mm):
-345.82	Radius R₂ (mm):
-344.20	Radius R₃ (mm):
N-BK7 / N-SF2	Substrate: <input type="checkbox"/>
60-40	Surface Quality:
11.1	f#:
0.05	Numerical Aperture NA:
MgF ₂ (400-700nm)	Coating:
R _{avg} ≤ 1.75% @ 400 - 700nm	Coating Specification:
400 - 700	Wavelength Range (nm):

Regulatory Compliance

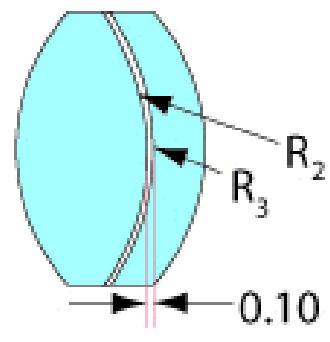
View	Certificate of Conformance:
Compliant	Reach 240:

PRODUCT DETAILS

- Offered in Cemented or Air-Spaced Designs
- Mounted Versions Available for Easy Integration
- Feature MgF₂ Anti-Reflection Coating

TECHSPEC® Large Precision Achromatic Lenses offer near-diffraction limited performance across the designated wavelength range. These color-corrected achromatic lenses feature long focal lengths and are available in either cemented or air-spaced designs. The lenses have a MgF₂ anti-reflection coating and are available in diameters up to 140mm. TECHSPEC® Large Precision Achromatic Lenses, in the mounted version, feature a male mounting thread for easy integration into optical systems. Adhesive foil spacers and mounting instructions are included for unmounted, air-spaced achromatic lenses.

TECHNICAL INFORMATION



Airspaced

COATING CURVES
