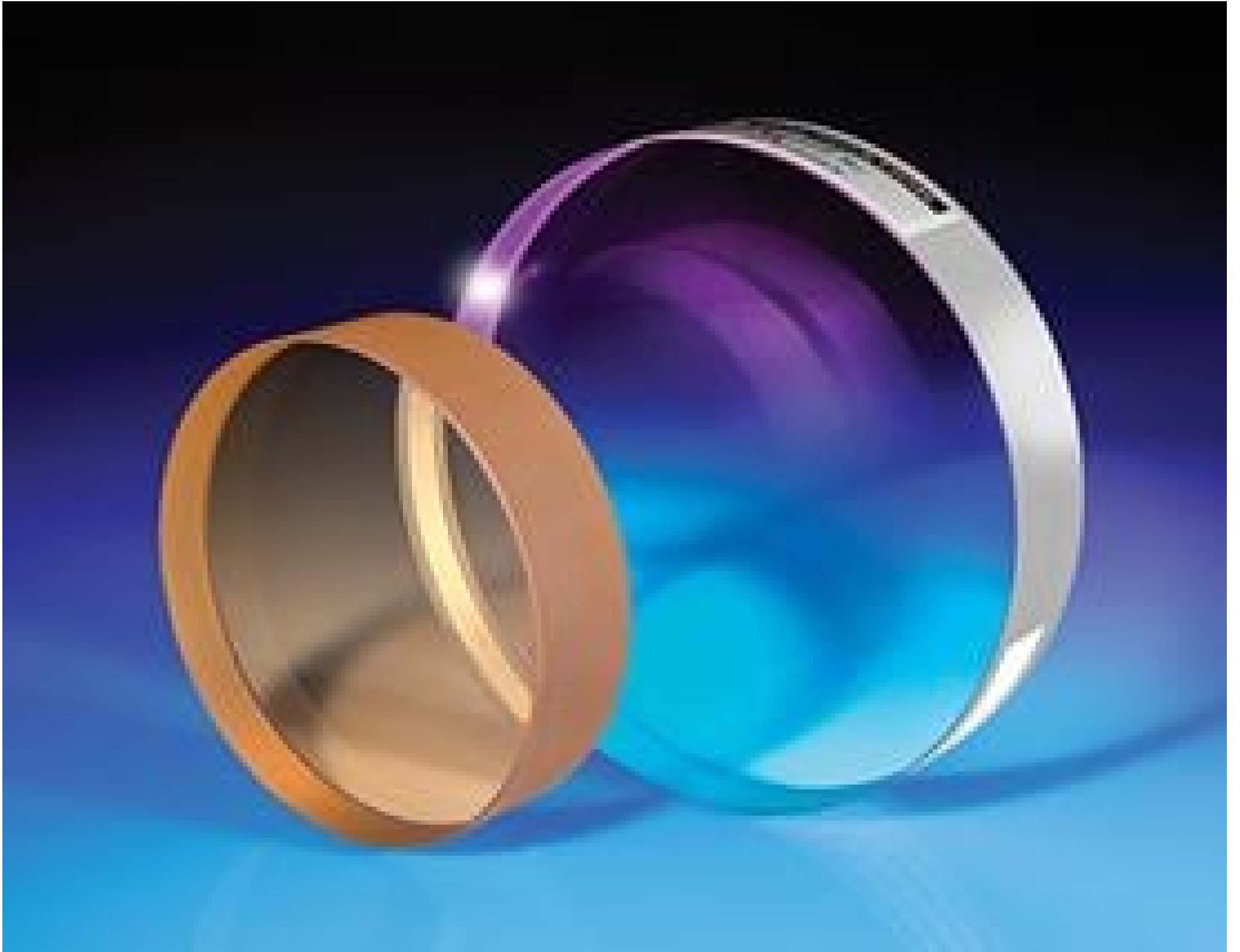


[See all 39 Products in Family](#)

TECHSPEC® 76.2mm Dia. $\lambda/20$ Fused Silica Optical Flat



Stock #47-573-000 **20+ In Stock**

⊖ 1 ⊕ MRP ₹60,534

● Price inclusive of all taxes

ADD TO CART

Volume Pricing	
Qty 1-10	₹60,534 each
Qty 11-25	₹53,977 each
Qty 26-49	₹50,950 each
Need More?	Request Quote

Product Downloads

General

Interferometry Window **Type:**

Includes a certificate of calibration. **Note:**

Physical & Mechanical Properties

68.60	Clear Aperture CA (mm):
3.00 +0.00/-0.04	Diameter (inches):
76.20 +0.00/-1.00	Diameter (mm):
0.75 ±0.06	Thickness (inches):
19.05 ±1.5	Thickness (mm):
≤3	Parallelism (arcmin):
Protective as needed	Bevel:
Single Surface	Construction:
Fine Ground	Edges:
0.16	Poisson's Ratio:
73	Young's Modulus (GPa):
522.00	Knoop Hardness (kg/mm²):

Optical Properties

Uncoated	Coating:
Clear	Color:
Fused Silica	Substrate: <input type="checkbox"/>
1.458	Index of Refraction (n_d):
60-40	Surface Quality:
67.8	Abbe Number (v_d):
200 - 2200	Wavelength Range (nm):
λ/20	Surface Flatness (P-V):

Material Properties

2.20	Density (g/cm³):
0.52 (+5 to +35°C) 0.57 (0 to +200°C) 0.48 (-100 to +200°C)	Coefficient of Thermal Expansion CTE (10⁻⁶/°C):

Regulatory Compliance

Compliant	RoHS 2015:
Compliant	Reach 211:
View	Certificate of Conformance:
Germany	Country of Origin:
Edmund Optics India Private Limited 267, Greystone Building, Second Floor, 6th Cross Rd, Binnamangala, Stage 1, Indiranagar, Bengaluru, Karnataka, India 560038 Phone: +91- 80-6845 0000	Imported By:

Product Details

- Sizes Ranging from 1/2" Diameter to 14" Diameter
- Each λ/20 Flat 76.2mm and Larger Includes a Certificate of Calibration
- Available with Standard Metallic Mirror Coatings: [λ/10 and λ/20 Mirrors](#)

TECHSPEC® Single Surface Optical Flats are used as a reference (test plate) against which the flatness of an unknown surface may be compared. Each piece is precision polished by our master opticians and tested on a Zygo interferometer to insure the surface flatness. The secondary surfaces of our single surface flats are pitch polished to window quality for viewing the interference pattern. TECHSPEC Single Surface Optical Flats ship in a durable

storage case for permanent protection. $\lambda/20$ flats that are 76.2mm or larger also include a certificate of calibration.

;