

# 75mm High Power Ring Light White

See More by [CCS](#)



Stock #21-798 **2 In Stock**

MRP ₹1,15,227

**●** Price inclusive of all taxes

**ADD TO CART**

Volume Pricing	
Qty 1+	₹1,15,227 each
Need More?	<a href="#">Request Quote</a>

## Product Downloads

### General

**Model Number:**  
HPR2-75SW

**Type of Illumination:**  
LED Illuminator

**Note:**  
Requires #20-175, #20-171

**Manufacturer:**  
CCS

**Geometry:**

Ring Light

Constant **Illumination Mode:**

## Physical & Mechanical Properties

OD: 91, ID: 41, Height 26.4 **Dimensions (mm):**

160 **Weight (g):**

## Optical Properties

White **Color:**

## Electrical

16 **Power Consumption (W):**

## Hardware & Interface Connectivity

24 **Input Voltage (V):**

**Power Supply:**  
Power Supply Required and Sold Separately.  
USA: [#73-491](#)  
Europe: [#73-491](#)  
Japan: [#89-513](#)  
Korea: [#33-773](#)  
China: [#73-491](#)

## Environmental & Durability Factors

6000 **Color Temperature (K):**

## Regulatory Compliance

[Exempt](#) **RoHS 2015:**

[Contains SVHC\(s\)](#) **Reach 224:**

[View](#) **Certificate of Conformance:**

United States **Country of Origin:**

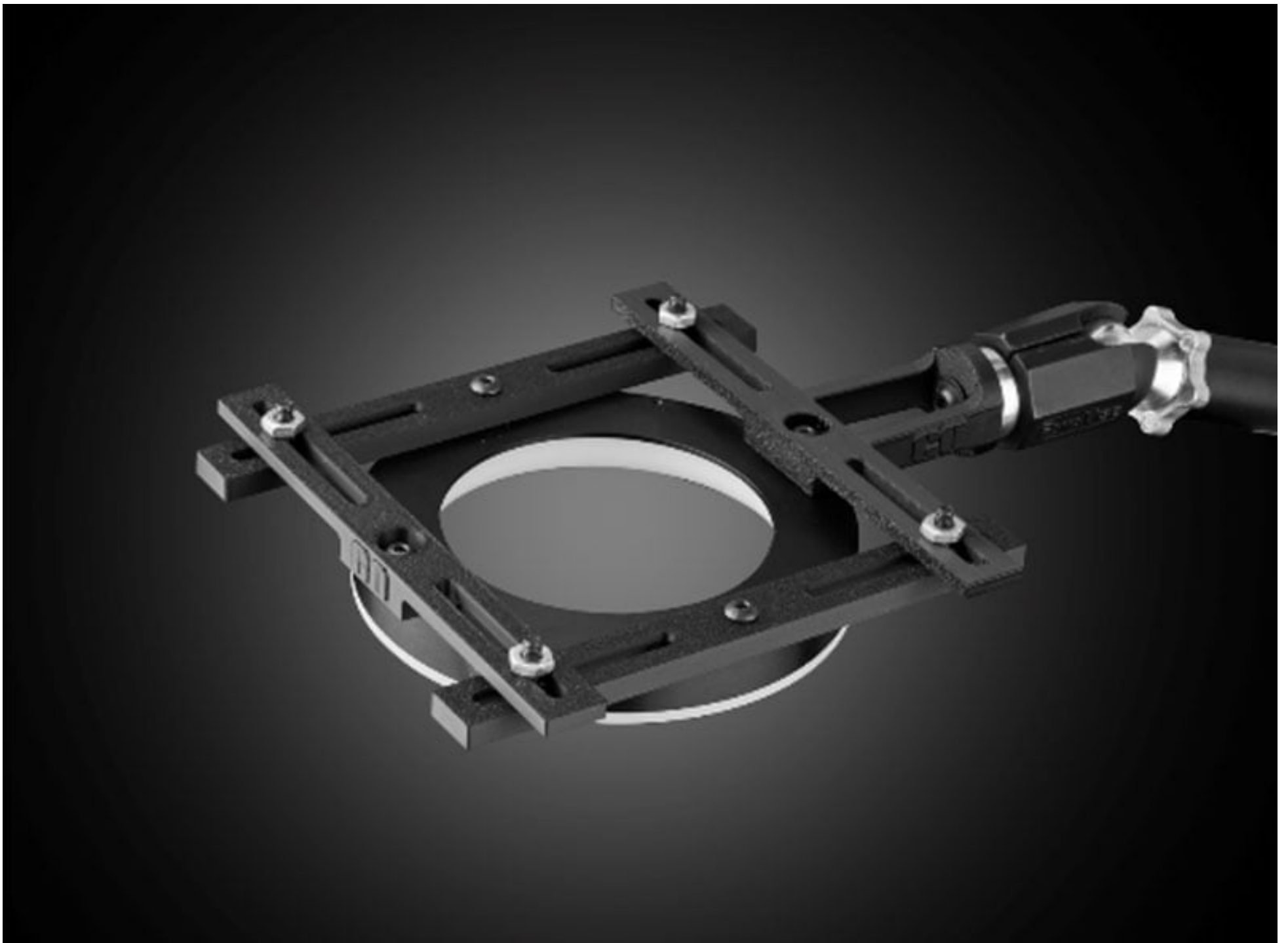
**Imported By:**  
Edmund Optics India Private Limited  
267, Greystone Building, Second Floor,  
6th Cross Rd, Binnamangala,  
Stage 1, Indiranagar, Bengaluru,  
Karnataka, India 560038  
Phone: +91- 80-6845 0000

## Product Details

- Uniform High Intensity Diffuse Light Source
- Switchable Red, Green, Blue, and White Channel Outputs
- Illumination for Text Recognition (OCR) and Color Examination Applications

CCS High Intensity Ring Lights feature a curved diffusion plate which provides uniform high intensity diffuse light. These lights can be used for a wide range of working distances as the unique design ensures little change in the uniform region as distance from the workpiece increases or decreases. The full color models feature independently controllable channels of red, green, and blue LED's while single color red, blue, and white models are also available. CCS High Intensity Ring Lights are ideal for a wide variety of detection applications such as text recognition (OCR) and color examination.

[3D-Printable Mount Files](#)



Ring Light Configuration

[Download Now](#)

Designed for use with the [Articulating Arm Mounting Systems](#), these 3D-printed mounts allow easy positioning of lights in brightfield or darkfield setups. The design is based on mounting illumination to ¼-20" breadboards or into 80/20 extrusion systems, but can be adapted based on user needs. Mounts are available for ring, bar, line, and inline spot lights.



Application Note

Illumination Mounts for Machine Vision Applications  
[Read](#)



Video

Assembly of 3D Printed Mounts for Common Illumination Geometries  
[Watch](#)

## Technical Information

**HPR2-75 model** NEW!  
 Applications: Text recognition on electronics parts, detecting edges of metal parts, etc.

● Comparison of imaging for the HPR2-75RD (red) and with the Ring Light LDR2-70RD2 (red)

Workpiece: Electronics part in embossed tape	With Ring Lights, reflection from the embossed tape surface makes it difficult to perform stable examination.	The new HPR2-75RD allows for text imaging that limits surface reflection.

## Lineup of full color (RGB) types **NEW!**

Applications: Examining the exterior by color for multi-colored workpieces, examining the exterior of food products, etc.

● Imaging with the HPR2-200FC (full color)



Workpiece: Smartphone case



Imaging with red illumination



Imaging with blue illumination



Imaging with green illumination



Imaging with white (all colors lit up) illumination