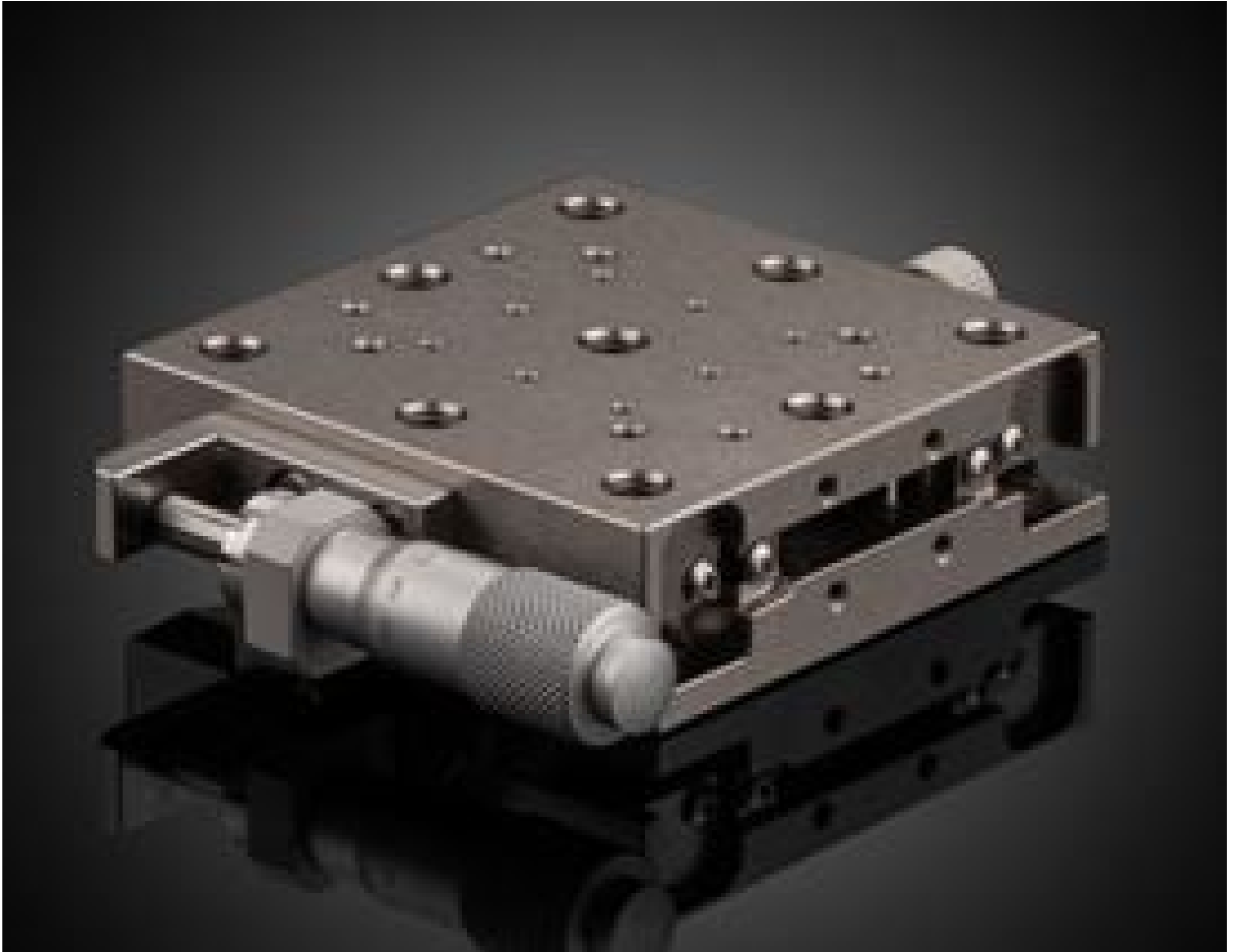


[See all 6 Products in Family](#)

## 65mm, Side Drive, 13mm Travel, Metric Stainless Steel Stage



Stock #22-944 **6 In Stock**

MRP ₹67,092

**i** Price inclusive of all taxes

**ADD TO CART**

### Volume Pricing

Qty 1-9	₹67,092 each
Qty 10+	₹63,762 each
Need More?	<a href="#">Request Quote</a>

### Product Downloads

### General

Metric **Type:**

### Physical & Mechanical Properties

Linear (X) **Type of Movement:**

Gothic Arc Ball Bearing **Guide System:**

**Drive Orientation:**

Side Drive	
65 x 65	<b>Stage Size (mm):</b>
13	<b>Travel (mm):</b>
0.51	<b>Travel (inches):</b>
Stainless Steel	<b>Construction:</b>
20	<b>Load Capacity (kg):</b>
196	<b>Load Capacity (N):</b>
15	<b>Parallelism (µm):</b>
1	<b>Straight Line Accuracy (µm):</b>
0.56	<b>Weight (kg):</b>
25	<b>Pitch (arcsec):</b>
15	<b>Yaw (arcsec):</b>

## Hardware & Interface Connectivity

Metric Micrometer	<b>Type of Drive:</b>
-------------------	-----------------------

## Threading & Mounting

(9) M6 x 1, (4) M3 x 0.5, (8) M2 x 0.4	<b>Mounting Threads:</b>
--	--------------------------

## Regulatory Compliance

<a href="#">Exempt</a>	<b>RoHS 2015:</b>
<a href="#">Contains SVHC(s)</a>	<b>Reach 223:</b>
<a href="#">View</a>	<b>Certificate of Conformance:</b>
Vietnam	<b>Country of Origin:</b>
Edmund Optics India Private Limited 267, Greystone Building, Second Floor, 6th Cross Rd, Binnamangala, Stage 1, Indiranagar, Bengaluru, Karnataka, India 560038 Phone: +91-80-6845 0000	<b>Imported By:</b>

## Product Details

- Stainless Steel Construction for up to 20kg Load Capacity
- Provides Excellent Temperature and Straight-Line Stability
- Compatible with all [TECHSPEC Manual Stages](#)

Stainless Steel Extended Contact Ball Bearing Linear Translation Stages feature a gothic arch guide system which provides excellent straightness and parallelism. With bearings machined directly out of the stainless-steel stage platform, these stages are designed to offer extreme stability in temperature-fluctuating environments and are ideal for system applications requiring up to a 20kg load capacity. Stainless Steel Extended Contact Ball Bearing Linear Translation Stages are configured with hole patterns that are compatible with all [TECHSPEC Manual Stages](#). Available in three stage sizes with either English or Metric Mounting Threads, the stages are easily configured in two and three axis orientations, making them ideal for both lab and system integration.