

[See all 10 Products in Family](#)

## 5.0" White, LED Darkfield Illuminator

See More by [Advanced Illumination](#)



Stock #66-792 **1 In Stock**

MRP ₹96,111

Price inclusive of all taxes

**ADD TO CART**

### Volume Pricing

Qty 1+	₹96,111 each
Need More?	<a href="#">Request Quote</a>

**Note:** This item requires accessories for use | [Learn More](#)

### Product Downloads

#### General

RL3536B-WHI-IC	<b>Model Number:</b>
50,000	<b>LED Lifetime (hours):</b>
36.00	<b>Number of LEDs:</b>
	<b>Number of Channels:</b>

1.00

LED Illuminator **Type of Illumination:**

**Note:**  
Optional Manual Intensity Adjustment [#86-887](#) and [#89-555](#) are Available

Advanced Illumination **Manufacturer:**

Ring Light **Geometry:**

Constant **Illumination Mode:**

## Physical & Mechanical Properties

46.2 **Height (mm):**

55.0 **Inner Diameter (mm):**

127.0 **Outer Diameter (mm):**

32 - 38 **Field Coverage (mm):**

## Optical Properties

White **Color:**

75 - 100 **Working Distance (mm):**

## Electrical

30.00 **Maximum Trigger Frequency (Hz):**

## Hardware & Interface Connectivity

Flying Leads **Connector:**

**Power Supply:**  
Power Supply Required and Sold Separately.  
USA: [#66-855](#)  
Europe: [#66-855](#)  
Japan: [#89-513](#)  
Korea: [#33-773](#)  
China: [#66-855](#)

## Threading & Mounting

Barrel Mount **Mount:**

M4 x4 **Mounting Threads:**

## Environmental & Durability Factors

0 to +65 **Operating Temperature (°C):**

## Regulatory Compliance

[Compliant](#) **RoHS 2015:**

[View](#) **Certificate of Conformance:**

[Contains SVHC\(s\)](#) **Reach 233:**

United States **Country of Origin:**

**Imported By:**  
Edmund Optics India Private Limited  
267, Greystone Building, Second Floor,  
6th Cross Rd, Binnamangala,  
Stage 1, Indiranagar, Bengaluru,  
Karnataka, India 560038  
Phone: +91- 80-6845 0000

## Product Details

For more information on Darkfield Illumination, click [here](#).

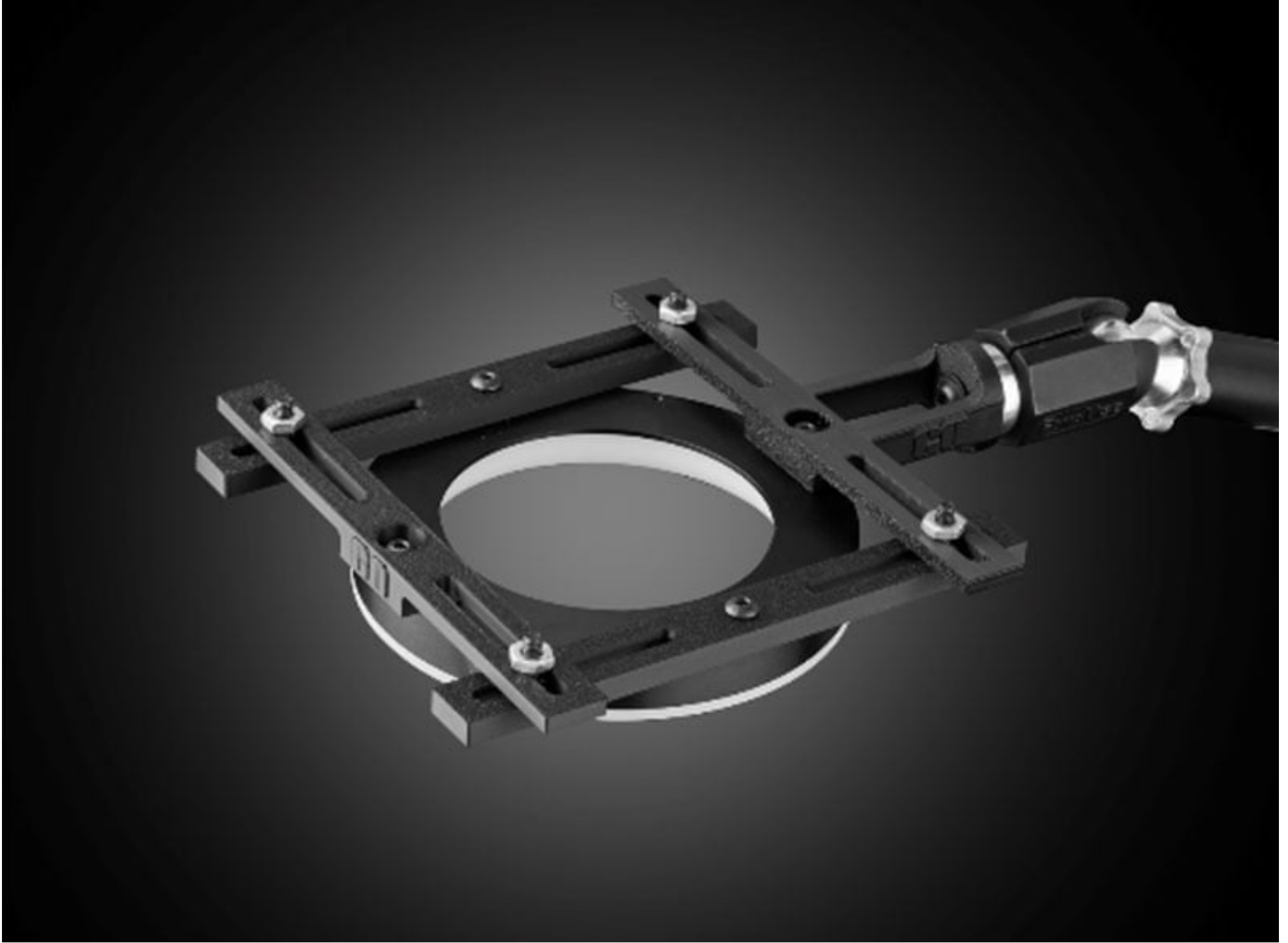
- Ideal for Visually Enhancing Surface Defects
- Useful for Front or Back Illumination
- 5" Versions Have Variable Intensity

Advanced Illumination Darkfield LED Illuminators are ideal for visually enhancing surface defects. LED intensity can be varied through the in line potentiometer. The 5" darkfield illuminator includes a mounting bracket for easy system integration.

**Note:** Required 24V power supply #66-855. [Accessories for Advanced Illumination products](#) are available and sold separately.

The strobed models' flash duration is dependent on a trigger signal or potentiometer setting. The duration of the strobe can be adjusted from 30 - 300 $\mu$ s via a knob located in the back of the unit. Trigger input signal is CMOS/TTL compatible. The maximum trigger frequency is 30Hz.

### 3D-Printable Mount Files



Ring Light Configuration

[Download Now](#)

Designed for use with the [Articulating Arm Mounting Systems](#), these 3D-printed mounts allow easy positioning of lights in brightfield or darkfield setups. The design is based on mounting illumination to 1/4-20" breadboards or into 80/20 extrusion systems, but can be adapted based on user needs. Mounts are available for ring, bar, line, and inline spot lights.



Application Note

Illumination Mounts for Machine Vision Applications

[Read](#)



Video

Assembly of 3D Printed Mounts for Common Illumination Geometries

[Watch](#)