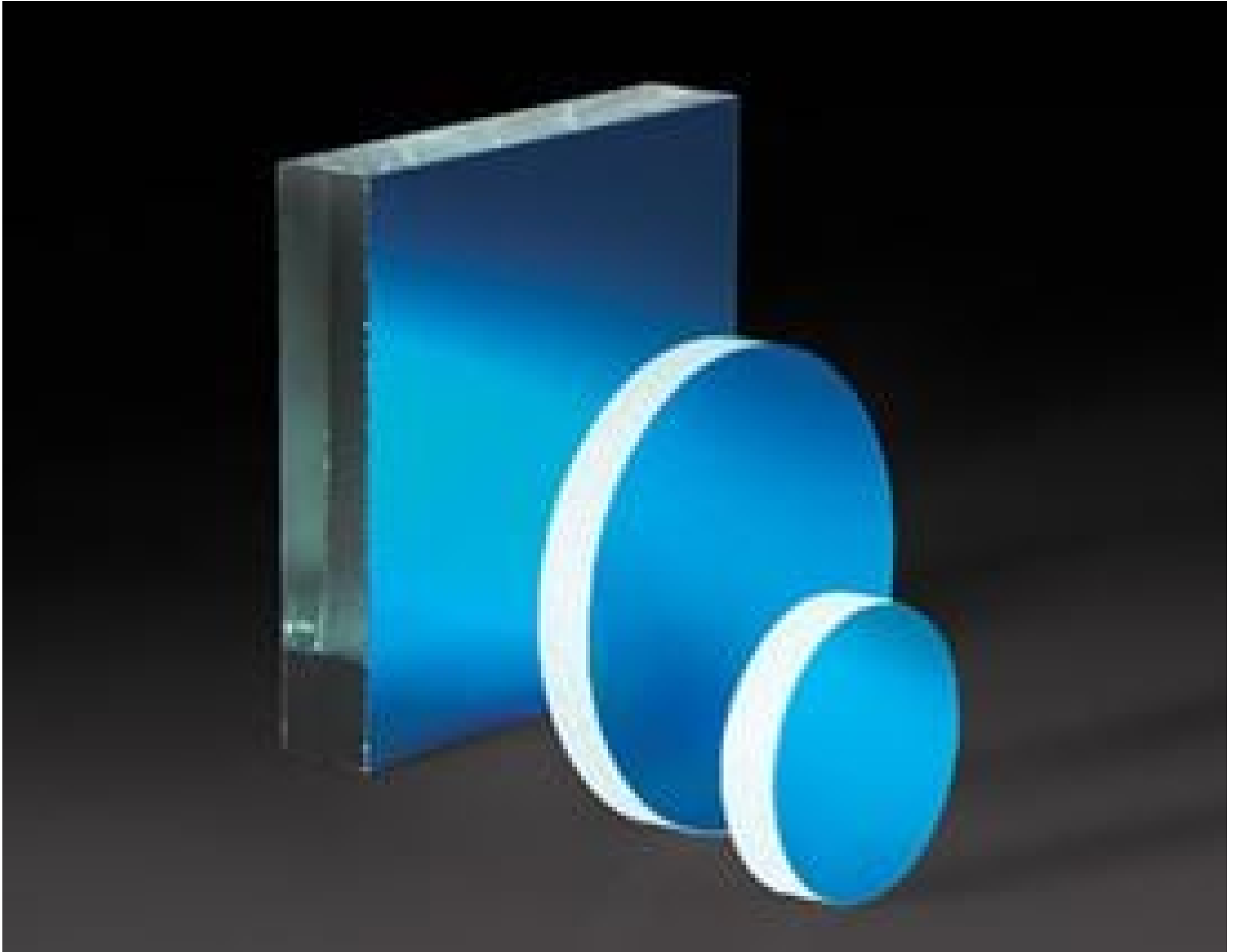


47 x 51mm Laser Diode Mirror



Stock #31-496 **14 In Stock**

1 MRP ₹4,590

● Price inclusive of all taxes

ADD TO CART

Volume Pricing	
Qty 1-10	₹4,590 each
Qty 11-24	₹3,532 each
Need More?	Request Quote

Product Downloads

General

Flat Mirror **Type:**

Physical & Mechanical Properties

6.35 **Thickness (mm):**

47.0 x 51.0 **Dimensions (mm):**

Dimensional Tolerance (mm):

±0.25

Length (mm):

51.00

Width (mm):

47.00

Optical Properties

Coating Type:

Dielectric

Coating:

Dielectric Mirror (500-700nm)

Design Wavelength DWL (nm):

633

Substrate:

Float Glass

Coating Specification:

R_{abs} >97% @633nm

Surface Quality:

80-50

Environmental & Durability Factors

Durability:

ML-C-48497A

Regulatory Compliance

RoHS 2015:

Compliant

Certificate of Conformance:

[View](#)

Reach 247:

Compliant

Country of Origin:

United States

Imported By:

Edmund Optics India Private Limited
267, Greystone Building, Second Floor,
6th Cross Rd, Binnamangala,
Stage 1, Indiranagar, Bengaluru,
Karnataka, India 560038
Phone: +91- 80-6845 0000

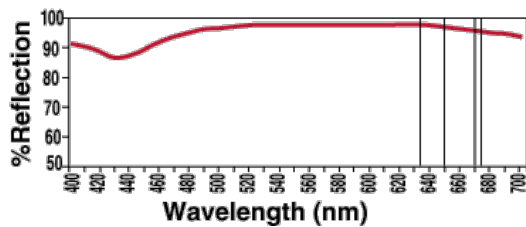
Product Details

- Over 95% Reflectance of Visible Laser Diode Light
- Ideal for Multiple Reflection Systems
- Coating Optimized for 633nm at 45° AOI

Visible Laser Diode Mirrors are specially coated to attain maximum reflection of visible laser diodes. Optimized for 633nm at a 45° angle of incidence, these mirrors provide 97% reflectance versus only 85 - 90% for standard first surface mirrors. This reduced loss is particularly important in multiple reflection systems, where loss can significantly impact system efficiency. Visible Laser Diode Mirrors feature a float glass substrate and are ideal for multiple reflection systems.

Technical Information

Visible Laser Diode Mirror Reflectance at 45°



@ 500nm	95.0%
@ 550nm	97.0%
@ 600nm	97.5%
@ 633nm	97.0%
@ 635nm	97.0%
@ 650nm	96.5%
@ 670nm	96.0%
@ 675nm	95.0%
@ 700nm	94.5%

Quote Your Size

Compatible Mounts
