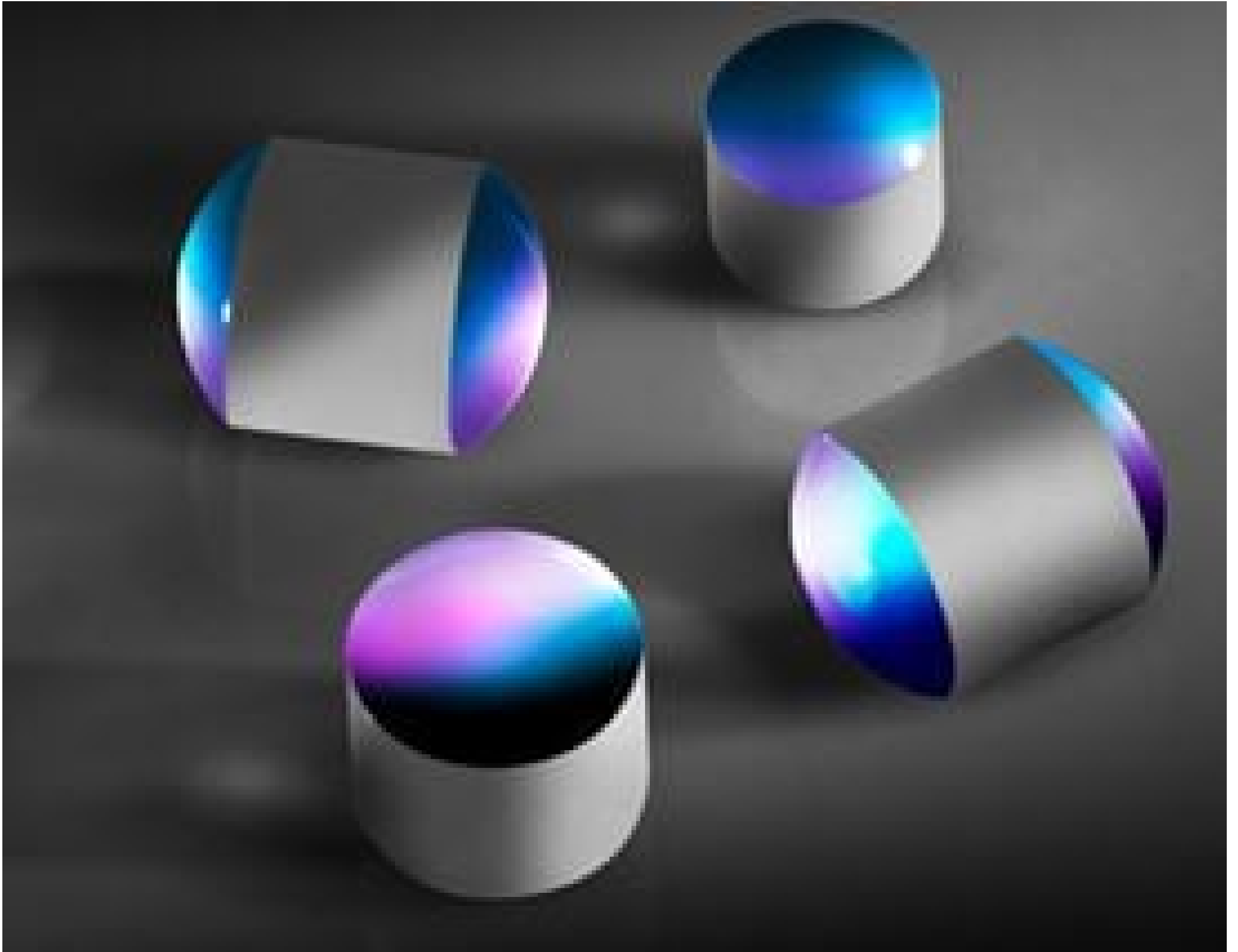


[See all 6 Products in Family](#)

TECHSPEC® 3.2mm Dia. x 4.0mm Length Telecom-NIR Coated, N-LASFN9 Drum Lens



Stock #45-745 CLEARANCE **20+ In Stock**

MRP ₹2,119

Price inclusive of all taxes

ADD TO CART

| Volume Pricing | |
|----------------|-------------------------------|
| Qty 1+ | ₹2,119 each |
| Need More? | Request Quote |

Product Downloads

General

Drum Lens **Type:**

Physical & Mechanical Properties

3.20 **Diameter (mm):**

4.00 **Length (mm):**

±3 **Length Tolerance (µm):**

| | |
|--|---|
| 2.00 | Radius R (mm): |
| +0/-1.5 | Radius Tolerance (µm): |
| +0/-50 | Diameter Tolerance (µm): |
| Optical Properties | |
| N-LASF9 | Substrate: □ |
| Telecom-NIR | Coating: |
| 1295 - 1565 | Wavelength Range (nm): |
| R _{abs} ≤0.25% @ 1295 - 1325nm R _{abs} ≤0.25% @ 1535 - 1565nm | Coating Specification: |
| 1.850 | Index of Refraction (n_d): |
| 40-20 | Surface Quality: |

| | |
|---|------------------------------------|
| Regulatory Compliance | |
| View | Certificate of Conformance: |
| Japan | Country of Origin: |
| Edmund Optics India Private Limited 267, Greystone Building, Second Floor, 6th Cross Rd, Binnamangala, Stage 1, Indiranagar, Bengaluru, Karnataka, India 560038 Phone: +91- 80-6845 0000 | Imported By: |

Need different specs or modifications?

Edmund Optics offers comprehensive custom manufacturing services for optical and imaging components tailored to your specific application requirements. Whether in the prototyping phase or preparing for full-scale production, we provide flexible solutions to meet your needs. Our experienced engineers are here to assist—from concept to completion.

Our capabilities include:

- Custom dimensions, materials, coatings, and more
- High-precision surface quality and flatness
- Tight tolerances and complex geometries
- Scalable production—from prototype to volume

Learn more about our [custom manufacturing capabilities](#) or submit an inquiry [here](#).

Product Details

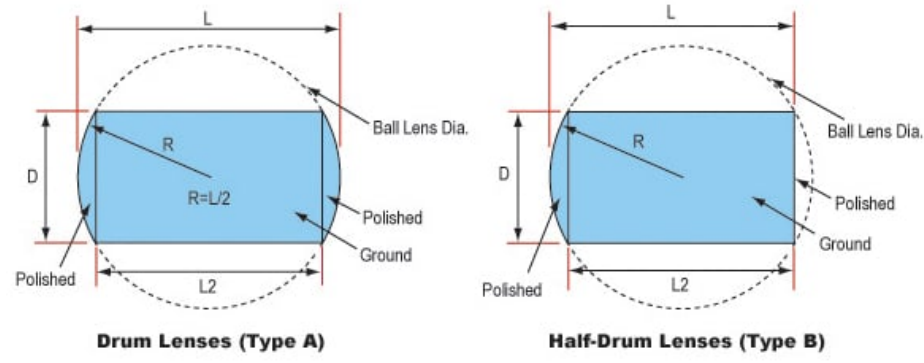
- Easier to Mount and Handle Than Standard Ball Lenses

Drum lenses are glass spheres, ground down axially to provide a mounting surface. The ground circumference D simplifies handling issues typically associated with ball lenses. Ideal for optical transmission in fiber communications. Type B Drum lenses have a polished plano-surface for direct fiber contact and perform as elongated PCX lenses.

Technical Information

| D | Radius R | Length | Length L2 | Stock No. |
|---------------------------|----------|--------|-----------|-------------------------|
| Type A Drum Lenses | | | | |
| 2mm | 1.25mm | 2.5mm | 1.5mm | #45-548 |
| | | | | #45-739 |
| | | | | #45-836 |
| | | | | #45-663 |
| | | | | #45-743 |
| 2.4mm | 1.5mm | 3mm | 1.8mm | #45-549 |
| | | | | #45-837 |
| | | | | #45-664 |
| | | | | #45-744 |
| 3.2mm | 2mm | 4mm | 2.4mm | #45-550 |
| | | | | #45-741 |
| | | | | #45-838 |
| | | | | #45-665 |
| | | | | #45-745 |

| | | | | |
|--------------------------------|--------|-------|-------|---------|
| 4mm | 2.5mm | 5mm | 3mm | #45-551 |
| | | | | #45-839 |
| | | | | #45-742 |
| | | | | #45-666 |
| Type B Half-Drum Lenses | | | | |
| 2mm | 1.25mm | 2mm | 1.5mm | #46-524 |
| | | | | #46-528 |
| 2.4mm | 1.5mm | 2.4mm | 1.8mm | #46-525 |
| | | | | #46-529 |
| 3.2mm | 2mm | 3.2mm | 2.4mm | #46-526 |
| | | | | #46-530 |
| 4mm | 2.5mm | 4mm | 3mm | #46-527 |
| | | | | #46-531 |



;