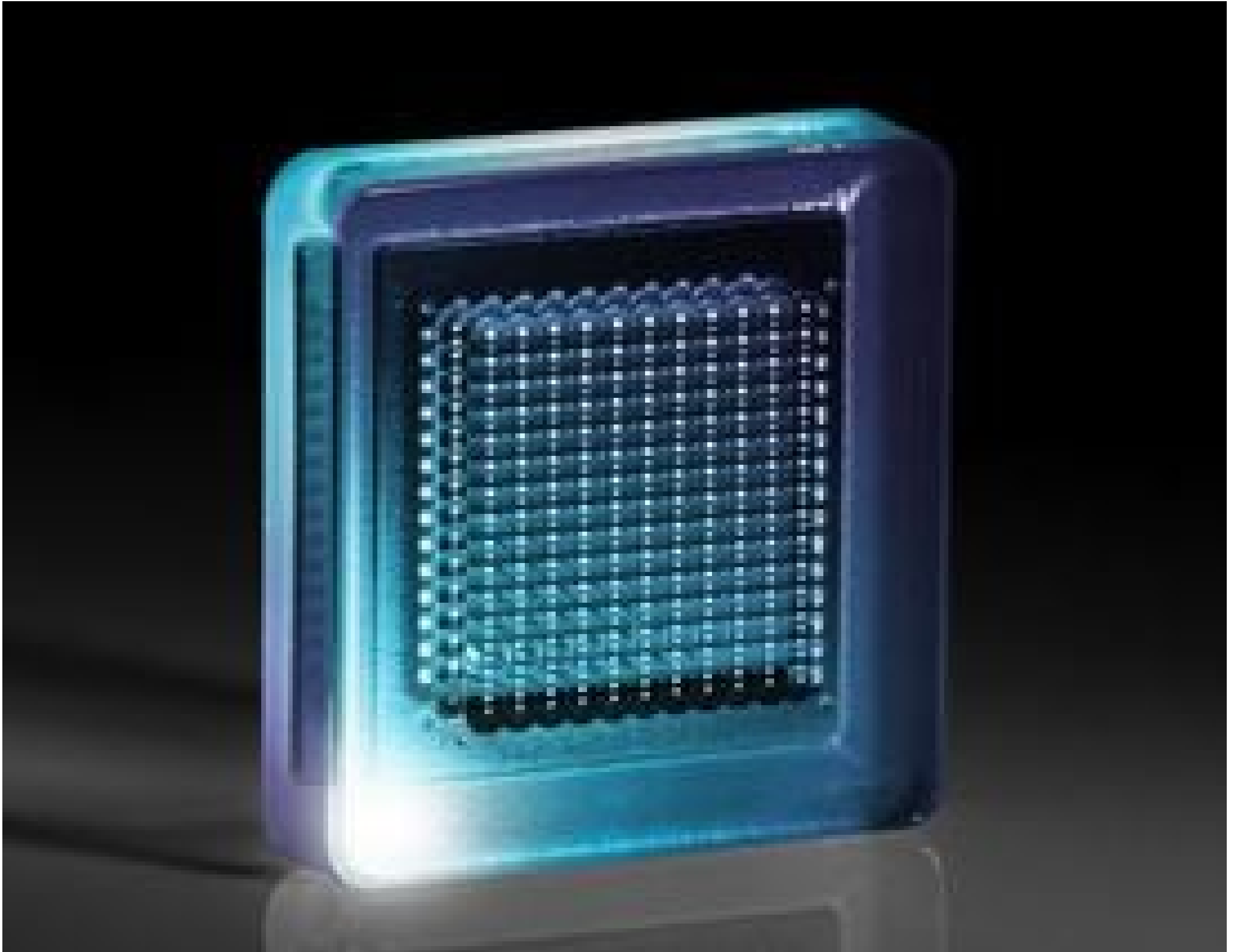


[See all 4 Products in Family](#)

## 32 x 33mm Double Sided Lenslet Array, 1.2 x 1.6mm Lenslets



Double Sided Multi-Lens Array

Stock #29-341 **16 In Stock**

MRP ₹40,280

**Price inclusive of all taxes**

**ADD TO CART**

Volume Pricing	
Qty 1-9	₹40,280 each
Qty 10-25	₹36,263 each
Qty 26-49	₹32,244 each
Need More?	<a href="#">Request Quote</a>

### Product Downloads

### General

Lens Array **Type:**

### Physical & Mechanical Properties

32.2 x 33.2 **Dimensions (mm):**

**Radius of Lenslet (mm):**

2.3±0.2

Thickness (mm):

7.04

### Optical Properties

Substrate: □

B270

Coating:

Uncoated

Wavelength Range (nm):

360 - 2700

### Regulatory Compliance

Certificate of Conformance:

[View](#)

Country of Origin:

Japan

Imported By:

Edmund Optics India Private Limited  
267, Greystone Building, Second Floor,  
6th Cross Rd, Binnamangala,  
Stage 1, Indiranagar, Bengaluru,  
Karnataka, India 560038  
Phone: +91- 80-6845 0000

## Product Details

- Integrated, Monolithic Design
- Single Sided Arrays Create Even Illumination in Pairs
- Double Sided Arrays Ideal for Laser Top Hat Profile Generation

Multi-Lens Arrays are an all glass monolithic design which yields higher transmission, superior stability, and affordability when compared to cemented or plastic varieties. These lenses are available as single-sided or double-sided arrays to meet requirements for illumination, projection, and laser systems. The single-sided arrays are used to create square spot patterns or to create even illumination when used in pairs. Decreasing the spacing between the two lens arrays will increase the illuminated area while increasing the spacing will decrease the area. Double sided lens arrays are ideal for use with laser sources to create top hat output profiles, ensuring uniform illumination for machine vision and microscopy applications.

## Technical Information

A	B	C	D	Stock No.
46.06mm	46.06mm	4mm	3mm	#63-230
58mm	60mm	7mm	5.4mm	#63-231

