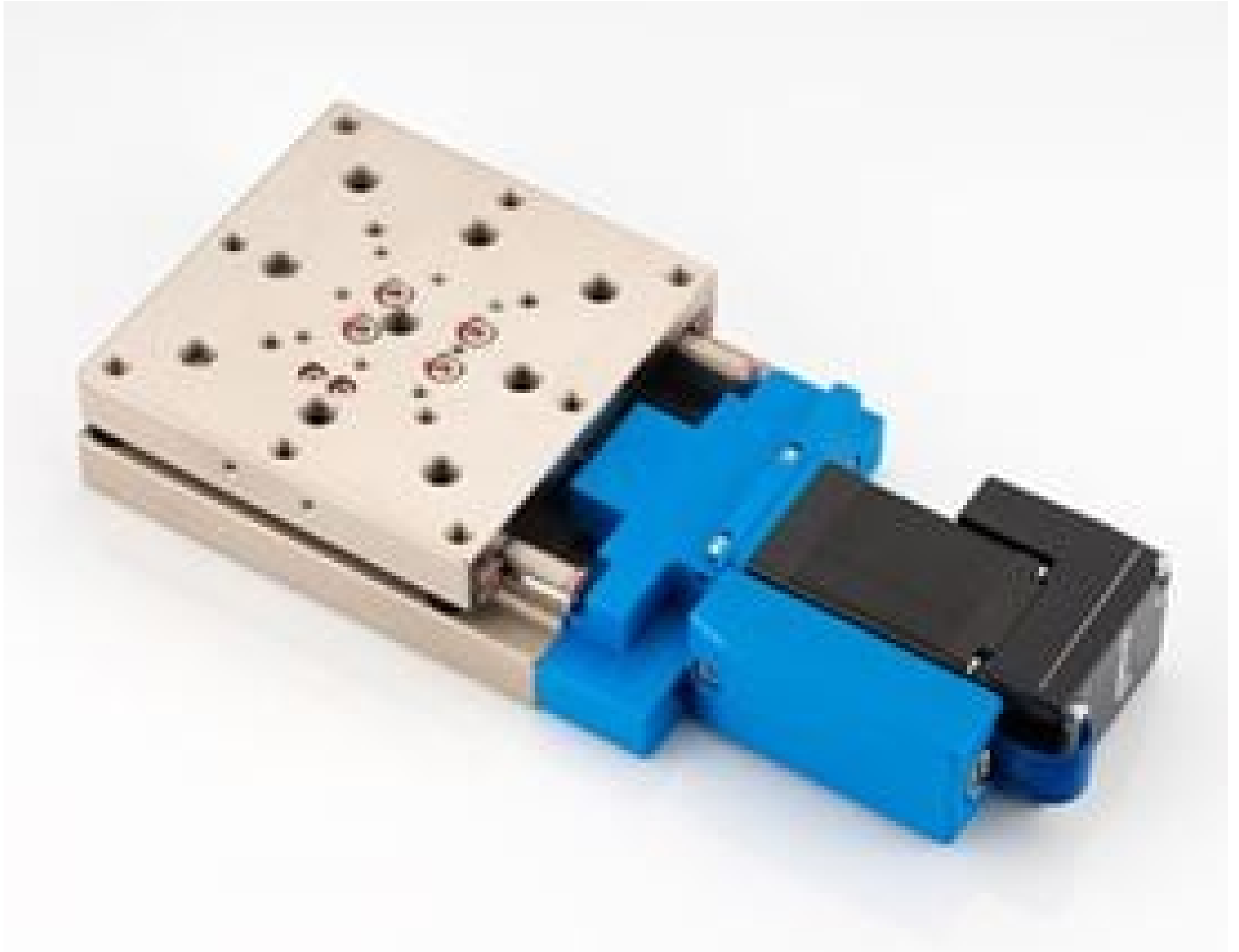


**TECHSPEC® 30mm Travel, 80mm Square TECHSPEC Motorized Linear Stage, Metric**



30mm Travel, 80mm Square TECHSPEC Motorized Linear Stage, Metric

Stock **#72-698** [CONTACT US](#)

⊖ 1 ⊕ MRP ₹2,11,869

● Price inclusive of all taxes

**ADD TO CART**

Volume Pricing

Qty 1+	₹2,11,869 each
Need More?	<a href="#">Request Quote</a>

Product Downloads

**General**

Metric **Type:**

Stepper Motor **Type of Motor:**

**Physical & Mechanical Properties**

Linear (X) **Type of Movement:**

Ball Bearing **Guide System:**

80 x 80	<b>Stage Size (mm):</b>
30	<b>Travel (mm):</b>
5	<b>Accuracy (µm):</b>
<1	<b>Backlash (µm):</b>
Stainless Steel	<b>Construction:</b>
30	<b>Height (mm):</b>
8	<b>Load Capacity (kg):</b>
15	<b>Parallelism (µm):</b>
±0.5	<b>Repeatability (µm):</b>
20	<b>Speed (mm/s):</b>
1.20	<b>Weight (kg):</b>
16,000 PPR	<b>Encoder Resolution:</b>

### Optical Properties

5 **Resolution (µm):**

### Hardware & Interface Connectivity

Lead Screw **Type of Drive:**

RS-485, USB **Control Interface:**

RS-485, USB **Computer Interface:**

### Threading & Mounting

(9) M6 x 1.0, (4) M3 x 0.5, (8) M2 x 0.4 **Mounting Threads:**

### Environmental & Durability Factors

0-50 **Operating Temperature (°C):**

### Regulatory Compliance

**Compliant** **RoHS 2015:**

**View** **Certificate of Conformance:**

**Compliant** **Reach 235:**

Taiwan **Country of Origin:**

**Imported By:**  
 Edmund Optics India Private Limited  
 267, Greystone Building, Second Floor,  
 6th Cross Rd, Binnamangala,  
 Stage 1, Indiranagar, Bengaluru,  
 Karnataka, India 560038  
 Phone: +91- 80-6845 0000

## Product Details

- High Precision, Monobloc Designs
- Integrated Motor and Controller
- Compatible with TECHSPEC Manual Stages

TECHSPEC Stainless Steel Motorized Linear Stages are a high-precision motion control solution for automated system alignment. The monobloc stainless steel design features ball bearing guides cut directly into the stage chassis, ensuring higher stiffness, straightness, and parallelism than typical stage assemblies. These motorized stages utilize the same mounting hole patterns as [TECHSPEC Manual Stages and Slides](#), allowing for the creation of combined manual and motorized optical systems, depending on the application's needs; this versatility is unique to Edmund Optics. TECHSPEC Stainless Steel Motorized Linear Stages are easily programmable and daisy chain compatible, ensuring fast setup of multi-axis automated systems. The stages deliver high precision for demanding photonics applications.