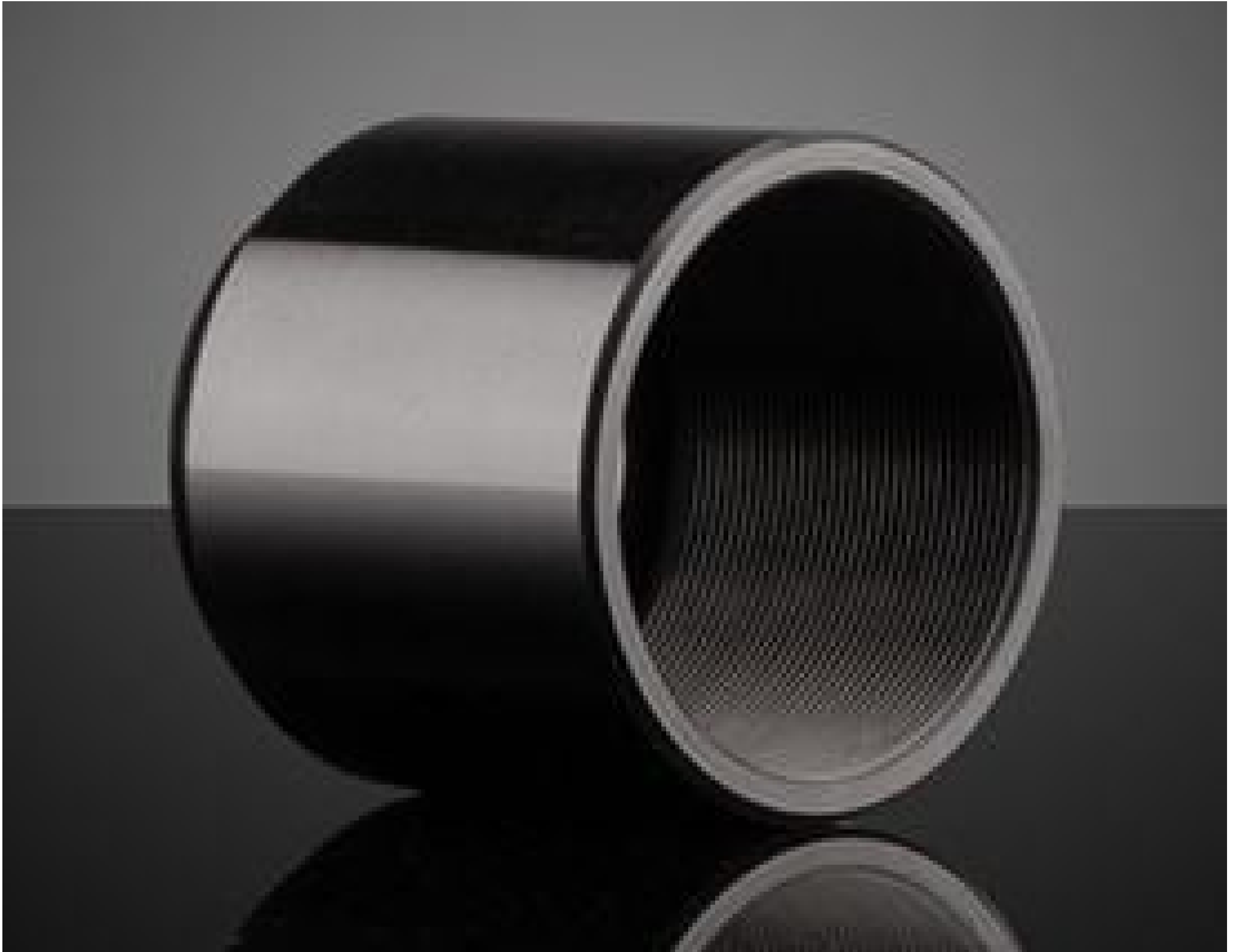


[See all 14 Products in Family](#)

**TECHSPEC® 30mm Length, Outer Tube**



TECHSPEC Multi-Element Outer Tubes

Stock #37-901 [CONTACT US](#)

⊖ 1 ⊕ MRP ₹2,649

● Price inclusive of all taxes

**ADD TO CART**

Volume Pricing	
Qty 1-4	₹2,649 each
Qty 5-9	₹2,351 each
Qty 10+	₹2,200 each
Need More?	<a href="#">Request Quote</a>

Product Downloads

**General**

**Function:**

Extension Tube (Fixed)

**Physical & Mechanical Properties**

**Extension Length (mm):**

30.0

**Total Length (mm):**

30.0

**Construction:**

Matte Black Anodized Aluminum (6061-T6)

**Outer Diameter (mm):**

32.0

## Threading & Mounting

**Thread Type:**

M29 x 0.75

## Regulatory Compliance

**RoHS 2015:**

[Compliant](#)

**Certificate of Conformance:**

[View](#)

**REACH 241:**

[Compliant](#)

**Country of Origin:**

China

**Imported By:**

Edmund Optics India Private Limited  
267, Greystone Building, Second Floor,  
6th Cross Rd, Binnamangala,  
Stage 1, Indiranagar, Bengaluru,  
Karnataka, India 560038  
Phone: +91- 80-6845 0000

## Product Details

- Continuous M29 x 0.75 Internal Threading for Easy Lens Spacing
- Prevent Unwanted External and Stray Light from Entering the System
- Available in Multiple Lengths for Compact Systems
- Click [Here](#) to See How to Use the Multi-Element Tube System Components to Build an Optical System.

TECHSPEC® Multi-Element Outer Tubes provide a compact and contained system mounting solution. Available in five different lengths, these outer tubes allow for control of overall system length. The enclosed design and matte finish helps prevent unwanted external and stray light from entering the optical system. TECHSPEC® Multi-Element Outer Tubes feature M29 x 0.75 internal threads along the entire optical axis, allowing for infinite optical spacing adjustment for both [TECHSPEC® Multi-Element Inner Single Optic Mounts](#) and [TECHSPEC® Multi-Element Inner Pair Optic Mounts](#). For harsh environment applications, the Multi-Element Retaining Ring Set ([#37-774](#)) is highly recommended to lock in lens spacing.

**Note:** The [TECHSPEC® Multi-Element Tube System Accessories](#) are recommended for easy system expansion or integration. The Multi-Element 2" Square Cage Interface Plate ([#11-213](#)) can be used to mount a Multi-Element Tube System Assembly to a [TECHSPEC Stainless Steel Mounting Post](#).