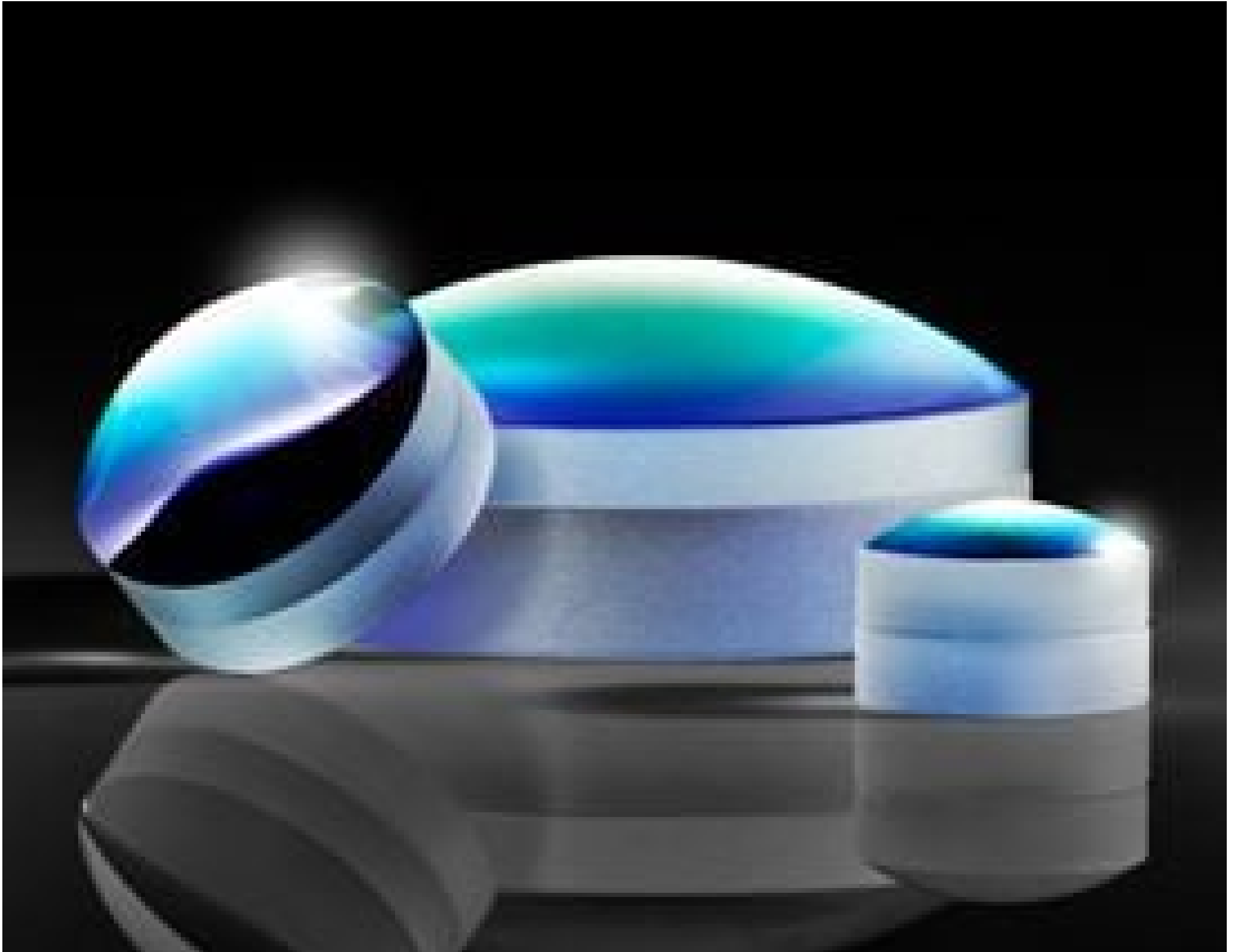


TECHSPEC® 25mm Diameter x 30mm EFL Aspherized Achromatic Lens



Aspherized Achromatic Lenses



Stock #49-662 **20+ In Stock**

1 MRP ₹15,033

Price inclusive of all taxes

ADD TO CART

Volume Pricing	
Qty 1-5	₹15,033 each
Qty 6-25	₹12,007 each
Qty 26-49	₹10,998 each
Need More?	Request Quote

Product Downloads

General

Note:
 VIS0° Coating on First Surface, Second Surface is Aspheric Polymer

Type:
 Achromatic Lens

Physical & Mechanical Properties

25.00 +0.00/-0.05 **Diameter (mm):**

22.00 **Clear Aperture CA (mm):**

≤5 **Centering (arcmin):**

11.58 **Center Thickness CT (mm):**

9.00 **Center Thickness CT 1 (mm):**

2.58 **Center Thickness CT 2 (mm):**

7.11 **Edge Thickness ET (mm):**

Optical Properties

30.00 **Effective Focal Length EFL (mm):**

23.21 **Back Focal Length BFL (mm):**

587.6 **Focal Length Specification Wavelength (nm):**

20.00 **Radius R₁ (mm):**

34.80 **Radius R₂ (mm):**

202.14 **Radius R₃ (mm):**

Substrate:
[N-LAK14 / N-SF57](#)

60-40, glass surface
80-50, polymer surface **Surface Quality:**

1.2 **f/#:**

0.42 **Numerical Aperture NA:**

VIS 0° (425-675nm) **Coating:**

R_{avg} ≤0.4% @425 - 675nm **Coating Specification:**

425 - 675 **Wavelength Range (nm):**

Environmental & Durability Factors

-20°C to 80°C **Operating Temperature (°C):**

Regulatory Compliance

[Compliant](#) **RoHS 2015:**

[Compliant](#) **Reach 219:**

[View](#) **Certificate of Conformance:**

Japan **Country of Origin:**

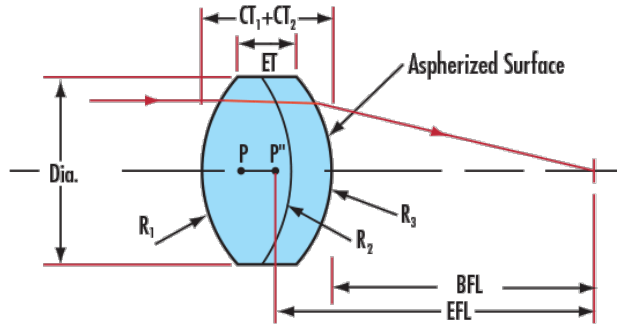
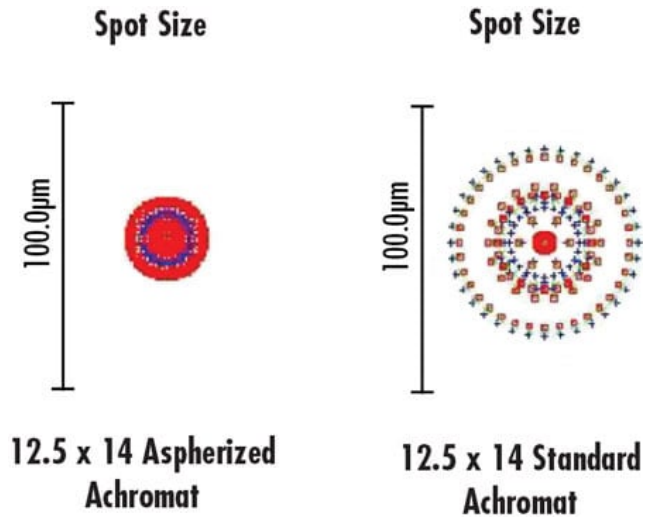
Edmund Optics India Private Limited
267, Greystone Building, Second Floor,
6th Cross Rd, Binnamangala,
Stage 1, Indiranagar, Bengaluru,
Karnataka, India 560038
Phone: +91- 80-6845 0000 **Imported By:**

Product Details

- Unique Innovative Design, Low Cost, Color-Corrected Asphere
- Better Color Correction than Standard Achromatic Lenses
- Similar Spherical Aberration Correction to Machined Aspheres
- Prescription Information Available

TECHSPEC® Aspherized Achromats bridge the gap between color-corrected achromats and spherical aberration-corrected aspheres. This unique design results in a cost-effective, color-corrected aspheric component. The doublet lenses consist of two cemented elements matched for their color-correction ability and small RMS spot size. The second surface of the doublet is fused with a molded polymer aspheric surface. These molds create a stable aspheric contour, removing or reducing wavefront errors present in typical achromats while boosting numerical aperture. TECHSPEC Aspherized Achromats' typical applications include fiber optic focusing or collimation, image relay, inspection, scanning, and high numerical aperture imaging.

Technical Information



CT: Center Thickness, ET: Edge Thickness, R: Radius, P: Principal Plane, BFL: Back Focal Length, EFL: Effective Focal Length

Coating Curves

Compatible Mounts