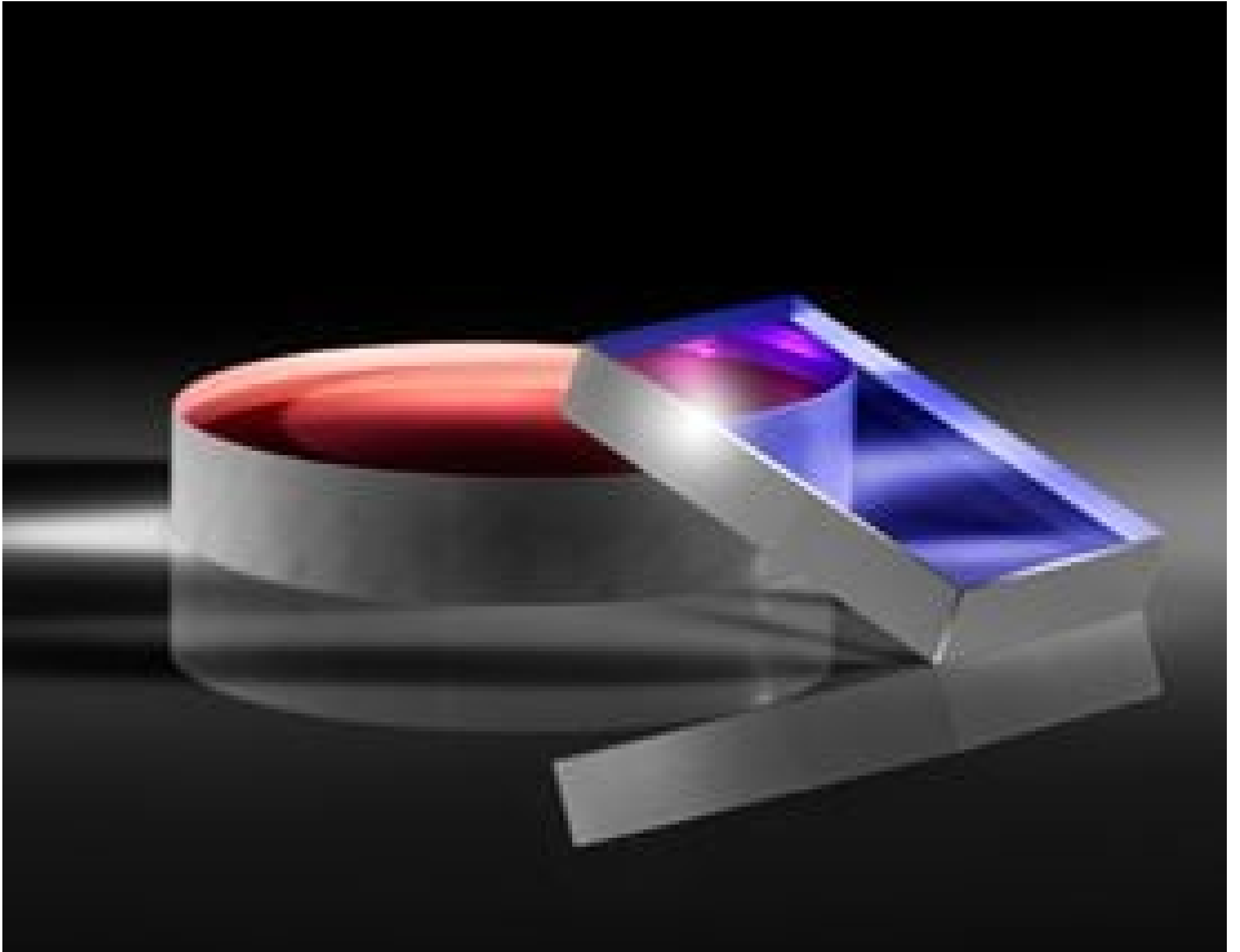


**TECHSPEC® 25.4 x 25.4mm Laser Mirror Substrate**



TECHSPEC® Laser Mirror Substrates

Stock #37-725 **20+ In Stock**

- 1 + MRP ₹10,796

● Price inclusive of all taxes

**ADD TO CART**

Volume Pricing	
Qty 1-10	₹10,796 each
Qty 11-25	₹9,685 each
Qty 26-50	₹8,576 each
Need More?	<a href="#">Request Quote</a>

Product Downloads

**General**

Laser Mirror Substrate **Type:**

**Physical & Mechanical Properties**

<3 **Parallelism (arcmin):**

**Clear Aperture (%):**

Commercial Polish **Back Surface:**

25.4 x 25.4 +0.00/-0.10 **Dimensions (mm):**

6.35 ±0.20 **Thickness (mm):**

21.59 x 21.59 **Clear Aperture CA (mm):**

Ground, protective bevel as needed **Edges:**

## Optical Properties

10-5 **Surface Quality:**

λ/10 **Surface Flatness (P-V):**

Uncoated **Coating:**

[Fused Silica](#) (Corning 7980) **Substrate:**

## Regulatory Compliance

[Compliant](#) **RoHS 2015:**

[Compliant](#) **Reach 209:**

[View](#) **Certificate of Conformance:**

United States **Country of Origin:**

**Imported By:**  
Edmund Optics India Private Limited  
267, Greystone Building, Second Floor,  
6th Cross Rd, Binnamangala,  
Stage 1, Indiranagar, Bengaluru,  
Karnataka, India 560038  
Phone: +91- 80-6845 0000

## Product Details

- λ/10 and λ/20 Surface Flatness and 10-5 Surface Quality
- High Quality Fused Silica Substrates
- Imperial Sizes with Circular or Rectangular Geometries
- [Window Substrates](#) Also Available

TECHSPEC® Laser Mirror Substrates are manufactured from high quality fused silica and are designed for use with high power laser sources. These mirrors feature excellent surface specifications, including λ/10 and λ/20 surface flatness and 10-5 surface quality, to limit the possibility of reduced performance due to surface defects. The high surface quality of these mirror blanks also makes them ideal for use in demanding intra-cavity laser applications. TECHSPEC Laser Mirror Substrates are available in standard imperial sizes, with either circular or rectangular geometries. Please contact us if your application requires a custom size laser mirror substrate.

## Compatible Mounts