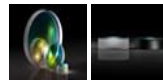
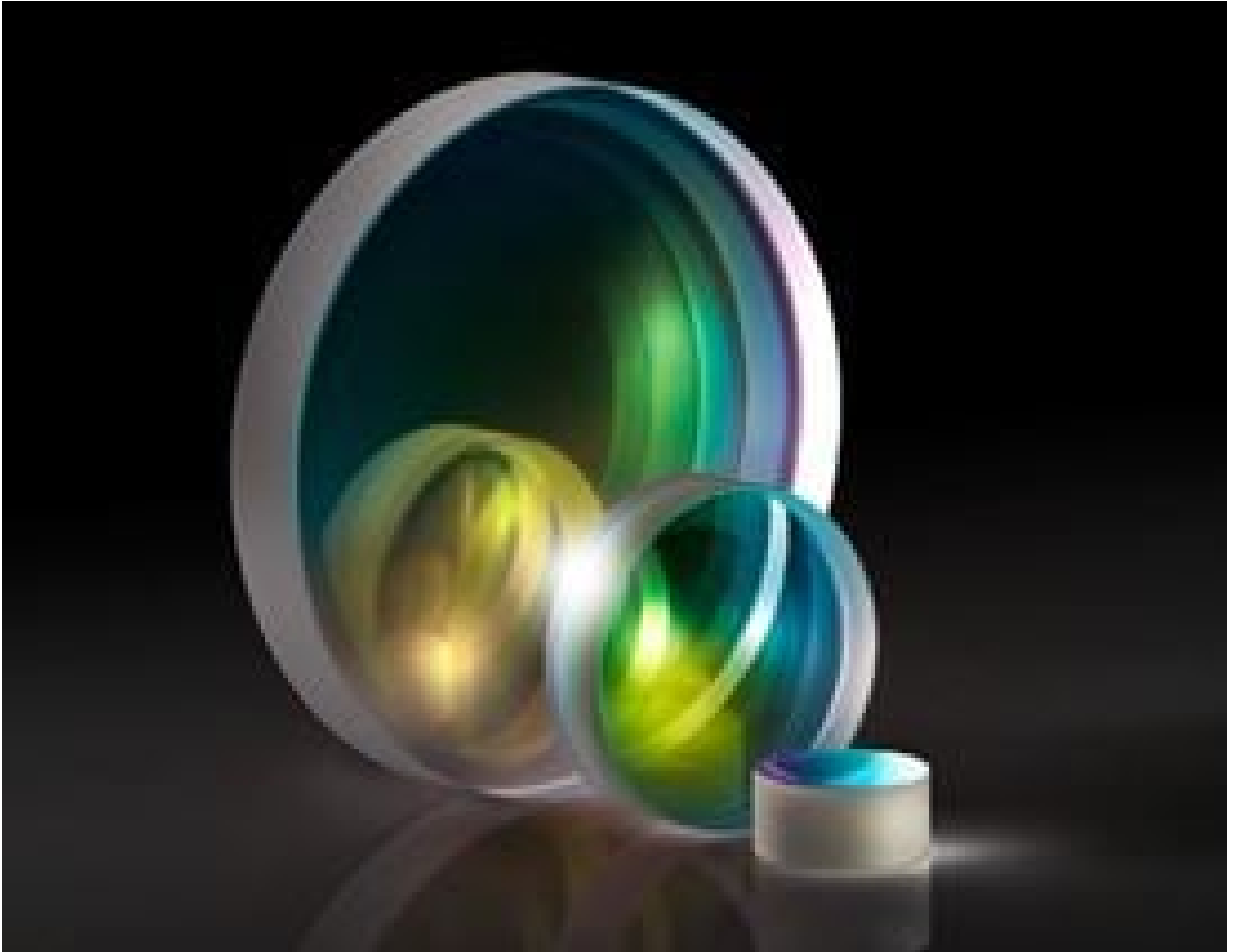


TECHSPEC® 25.0mm Dia. x -250 FL, 1064nm V-Coat, UV Plano-Concave Lens



Stock #21-042 [CONTACT US](#)

- 1 + MRP ₹16,546

Price inclusive of all taxes

ADD TO CART

| Volume Pricing | |
|----------------|-------------------------------|
| Qty 1-5 | ₹16,546 each |
| Qty 6-25 | ₹13,217 each |
| Qty 26-49 | ₹12,410 each |
| Need More? | Request Quote |

Product Downloads

General

Plano-Concave Lens **Type:**

Max. Flat Annulus is 0.3mm **Note:**

Physical & Mechanical Properties

| | |
|-------------------|---|
| 25.00 +0.0/-0.025 | Diameter (mm): |
| 2.50 | Center Thickness CT (mm): |
| ±0.10 | Center Thickness Tolerance (mm): |
| <1 | Centering (arcmin): |
| 24 | Clear Aperture CA (mm): |
| 3.15 | Edge Thickness ET (mm): |

Optical Properties

| | |
|---|--|
| -250.00 | Effective Focal Length EFL (mm): |
| Fused Silica (Corning 7980) | Substrate: <input type="checkbox"/> |
| 10.00 | f#: |
| 0.05 | Numerical Aperture NA: |
| 1064nm V-Coat | Coating: |
| -251.71 | Back Focal Length BFL (mm): |
| $R_{\text{abs}} < 0.25\% @ 1064\text{nm}$ | Coating Specification: |
| 1064 | Design Wavelength DWL (nm): |
| 587.6 | Focal Length Specification Wavelength (nm): |
| ±1 | Focal Length Tolerance (%): |
| -114.61 | Radius R₁ (mm): |
| 40-20 | Surface Quality: |
| 15 J/cm ² @ 1064nm, 10ns | Damage Threshold, By Design: <input type="checkbox"/> |
| 1.5λ | Power (P-V) @ 632.8nm: |
| λ/4 | Irregularity (P-V) @ 632.8nm: |

Regulatory Compliance

| | |
|---|------------------------------------|
| View | Certificate of Conformance: |
| Japan | Country of Origin: |
| Edmund Optics India Private Limited 267, Greystone Building, Second Floor, 6th Cross Rd, Binnamangala, Stage 1, Indiranagar, Bengaluru, Karnataka, India 560038 Phone: +91- 80-6845 0000 | Imported By: |

Need different specs or modifications?

Edmund Optics offers comprehensive custom manufacturing services for optical and imaging components tailored to your specific application requirements. Whether in the prototyping phase or preparing for full-scale production, we provide flexible solutions to meet your needs. Our experienced engineers are here to assist—from concept to completion.

Our capabilities include:

- Custom dimensions, materials, coatings, and more
- High-precision surface quality and flatness
- Tight tolerances and complex geometries
- Scalable production—from prototype to volume

Learn more about our [custom manufacturing capabilities](#) or submit an inquiry [here](#).

Product Details

- Negative Focal Lengths for Beam Expansion or Light Projection Applications
- Research-Grade Synthetic Fused Silica Substrate

- <0.25% Reflection at 1064nm for Nd:YAG and Fiber Laser Applications
- [Uncoated and BBAR Coating Options](#) Available

TECHSPEC® 1064nm Laser Line Coated UV Fused Silica Plano-Concave (PCV) Lenses are high performance lenses that feature a low coefficient of thermal expansion. Manufactured using research-grade synthetic fused silica, these lenses provide excellent transmission and chemical purity. TECHSPEC® 1064nm Laser Line Coated UV Fused Silica Plano-Concave (PCV) Lenses are designed for maximum throughput at 1064nm, making them ideal for applications utilizing Nd:YAG laser sources. With a maximum reflection of <0.25% per surface at the design wavelength, the lenses will provide superior transmission in applications utilizing multiple optical components.

Compatible Mounts

;