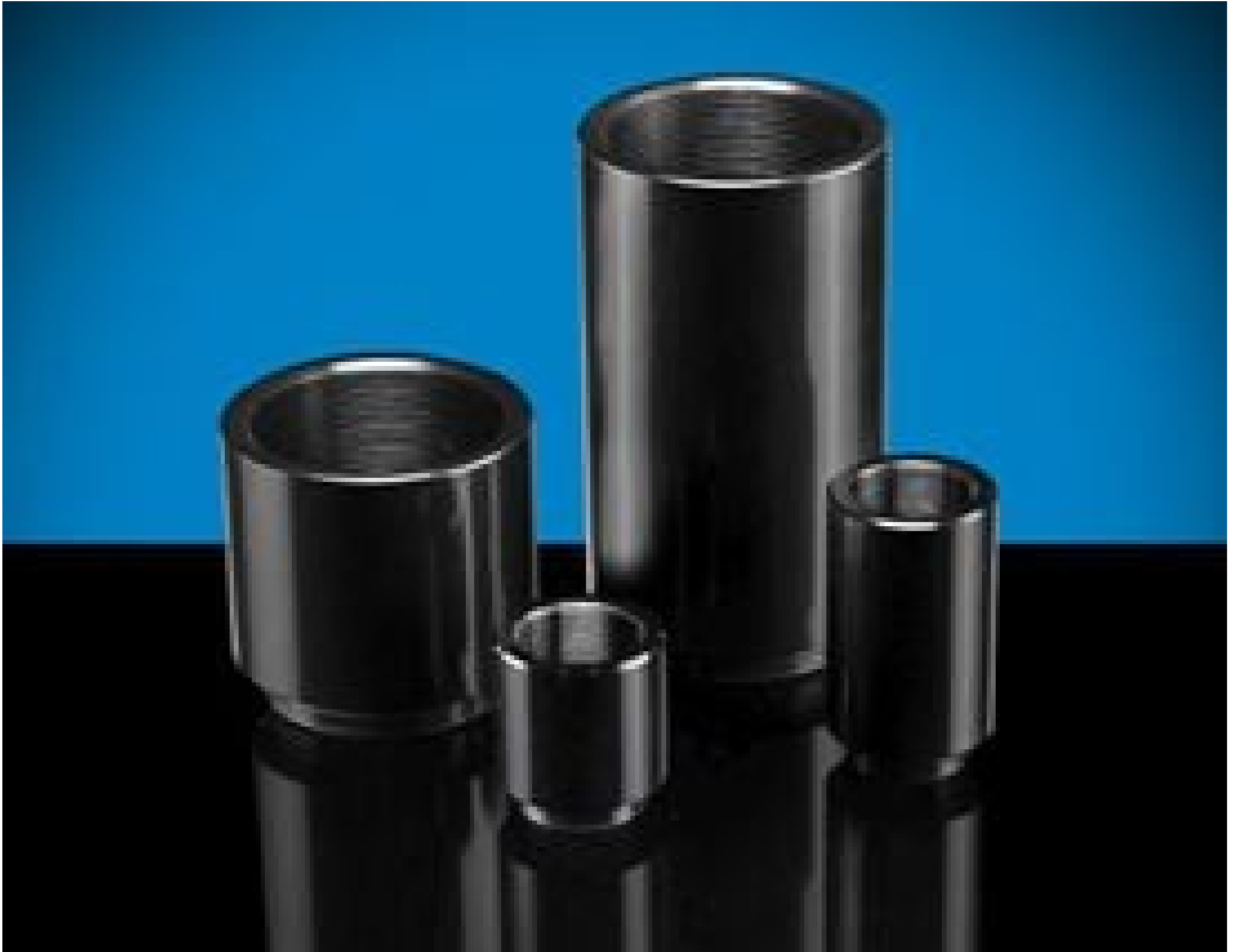


**TECHSPEC® 20mm SM05 Lens Tube**



TECHSPEC® ID Lens Tubes

Stock #35-778 [CONTACT US](#)

⊖ 1 ⊕ MRP ₹1,312

● Price inclusive of all taxes

**ADD TO CART**

Volume Pricing	
Qty 1-5	₹1,312 each
Qty 6-25	₹1,191 each
Qty 26+	₹1,151 each
Need More?	<a href="#">Request Quote</a>

Product Downloads

**General**

Extension Tube **Type:**

Extension Tube (Fixed) **Function:**

**Physical & Mechanical Properties**

Extension Length (mm):

20.0

Clear Aperture CA (mm):

10.0

Construction:

Anodized Aluminum

Outer Diameter (mm):

16.0

## Threading & Mounting

Thread Type:

0.535 x40 TPI (SM05)

## Regulatory Compliance

RoHS 2015:

[Compliant](#)

Certificate of Conformance:

[View](#)

REACH 241:

[Compliant](#)

Country of Origin:

China

Imported By:

Edmund Optics India Private Limited  
267, Greystone Building, Second Floor,  
6th Cross Rd, Binnamangala,  
Stage 1, Indiranagar, Bengaluru,  
Karnataka, India 560038  
Phone: +91- 80-6845 0000

## Product Details

- Enables Mounting for 25/25.4mm and 12.5/12.7mm Optics
- Ideal for Optical System Creation and Integration
- Continuous SM1 or SM05 Barrel Thread for Mounting Multiple Components

The TECHSPEC® SMLens Tubes offer an efficient method for mounting single or multiple optical components. Featuring anodized aluminum construction for a light-weight mounting solution, these lens tubes include a barrel thread that extends through the barrel for continuous lens mounting space. The TECHSPEC SMLens Tubes utilize SM1 (1.035" x40 TPI) or SM05 (0.535" x40 TPI) threads and are ideal for integration with [TECHSPEC Plano-Corvex](#) and [TECHSPEC Achromatic Lenses](#).

**Note:** Retainer ring sold separately. Spanner wrench [#11-046](#) has a specialized wrench head on one end designed for SM Tube System retainer ring adjustment.