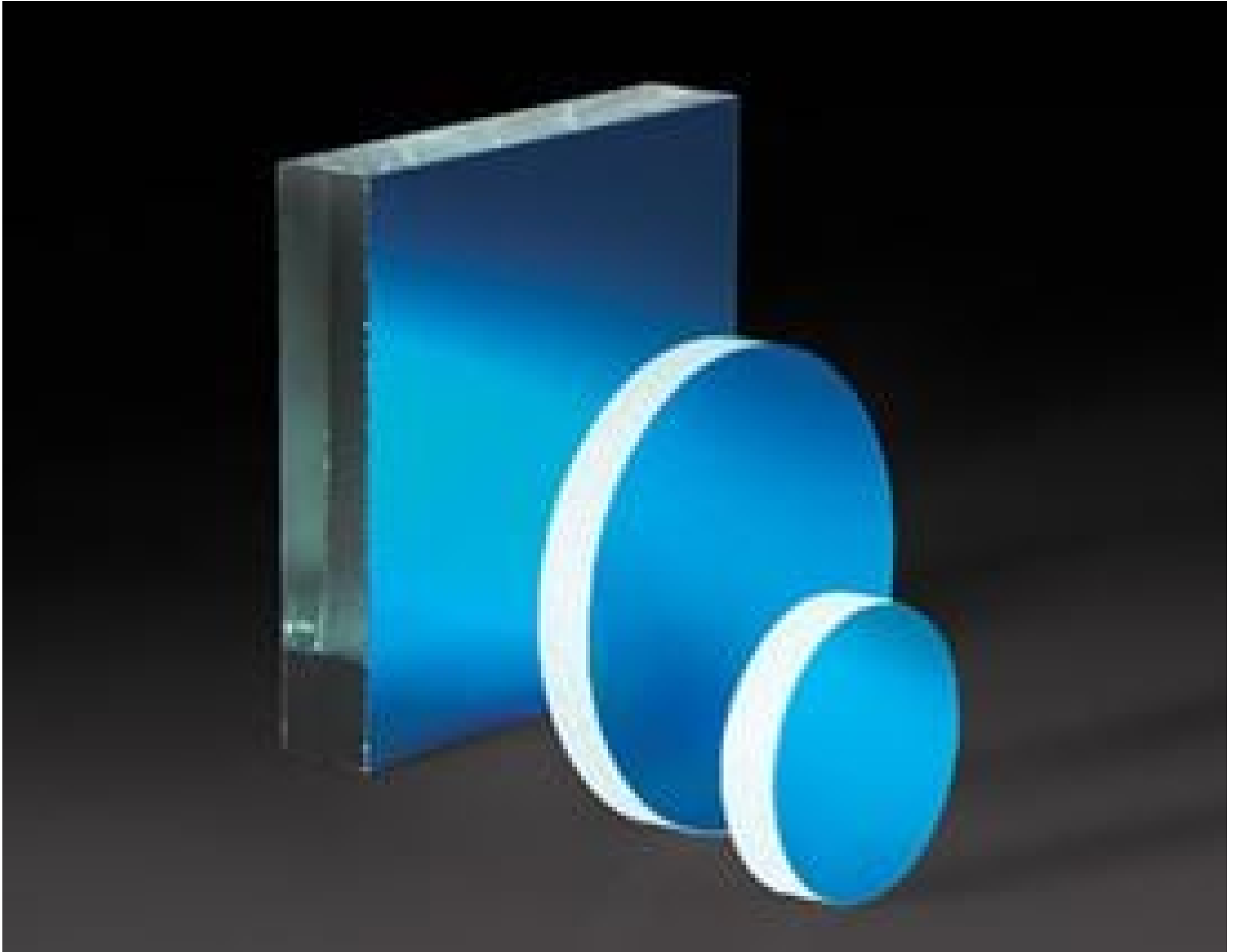


20mm Diameter Laser Diode Mirror



Stock #46-619 **20+ In Stock**

- 1 + MRP ₹3,002

● Price inclusive of all taxes

ADD TO CART

Volume Pricing	
Qty 1-10	₹3,002 each
Qty 11-24	₹2,321 each
Need More?	Request Quote

Product Downloads

General

Flat Mirror **Type:**

Physical & Mechanical Properties

20.00 ±0.25 **Diameter (mm):**

3.00 **Thickness (mm):**

Dimensional Tolerance (mm):

±0.25

Optical Properties

Dielectric **Coating Type:**

Dielectric Mirror (500-700nm) **Coating:**

633 **Design Wavelength DWL (nm):**

Float Glass **Substrate:**

$R_{\text{rms}} > 97\%$ @ 633nm **Coating Specification:**

80-50 **Surface Quality:**

Environmental & Durability Factors

ML-C-48497A **Durability:**

Regulatory Compliance

[Compliant](#) **RoHS 2015:**

[View](#) **Certificate of Conformance:**

[Compliant](#) **Reach 247:**

United States **Country of Origin:**

Imported By:
Edmund Optics India Private Limited
267, Greystone Building, Second Floor,
6th Cross Rd, Binnamangala,
Stage 1, Indiranagar, Bengaluru,
Karnataka, India 560038
Phone: +91- 80-6845 0000

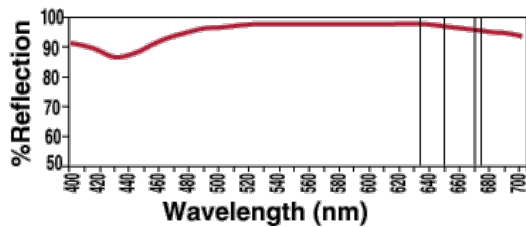
Product Details

- Over 95% Reflectance of Visible Laser Diode Light
- Ideal for Multiple Reflection Systems
- Coating Optimized for 633nm at 45° AOI

Visible Laser Diode Mirrors are specially coated to attain maximum reflection of visible laser diodes. Optimized for 633nm at a 45° angle of incidence, these mirrors provide 97% reflectance versus only 85 - 90% for standard first surface mirrors. This reduced loss is particularly important in multiple reflection systems, where loss can significantly impact system efficiency. Visible Laser Diode Mirrors feature a float glass substrate and are ideal for multiple reflection systems.

Technical Information

Visible Laser Diode Mirror Reflectance at 45°



@ 500nm	95.0%
@ 550nm	97.0%
@ 600nm	97.5%
@ 633nm	97.0%
@ 635nm	97.0%
@ 650nm	96.5%
@ 670nm	96.0%
@ 675nm	95.0%
@ 700nm	94.5%

Quote Your Size

Compatible Mounts
