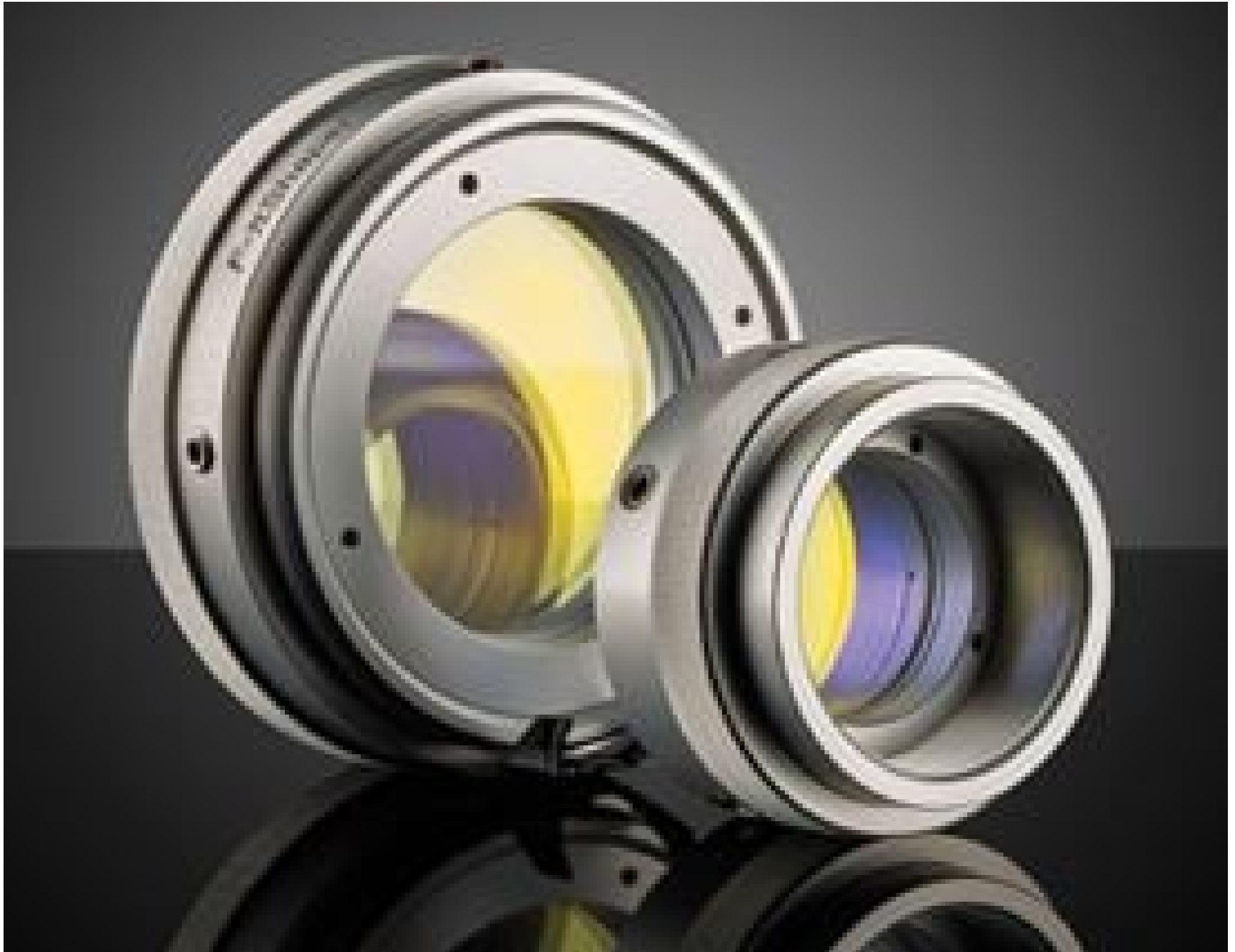


[See all 32 Products in Family](#)

1550nm & 2μm (1500 - 2100nm), 8-12mm Dia. Input Beam, Focal Flat Top Beam Shaper | Focal-πShaper_NIR_Q-10

See More by [AdiOptica](#)



Stock #25-854 [CONTACT US](#)

1 MRP ₹3,70,410

Price inclusive of all taxes

ADD TO CART

Volume Pricing	
Qty 1-4	₹3,70,410 each
Qty 5+	₹3,30,263 each
Need More?	Request Quote

Product Downloads

General

Focal-πShaper_NIR_Q-10 **Model Number:**

Beam Shaper **Type:**

Physical & Mechanical Properties

Length (mm):

29.00

Weight (g):

50

Clear Aperture CA (mm):

20

Diameter (mm):

42.00

Input Beam Diameter, $1/e^2$ (mm):

8 - 12

Optical Properties

Transmission (%):

>99

Design Wavelength DWL (nm):

1550, 2000

Wavelength Range (nm):

1550 - 2000

Input Beam Mode:

TEM₀₀

Typical Input Beam Mode Quality, M^2 :

<1.5

Input Beam Divergence (mrad):

±20

Electrical

Maximum Input Power, CW (kW):

0.2

Threading & Mounting

Inner Thread:

M30 x 0.75

Outer Thread:

M30 x 0.75

Regulatory Compliance

RoHS 2015:

[Compliant](#)

Certificate of Conformance:

[View](#)

Reach 250:

[Compliant](#)

Country of Origin:

Germany

Imported By:

Edmund Optics India Private Limited
267, Greystone Building, Second Floor,
6th Cross Rd, Binnamangala,
Stage 1, Indiranagar, Bengaluru,
Karnataka, India 560038
Phone: +91- 80-6845 0000

Product Details

- Shapes Gaussian Beams to Airy Disk Profile
- Airy Disk is Focusable to Flat Top Spot
- Near 100% Efficiency
- [AdlOptica πShaper Flat Top Beam Shapers](#) Also Available

AdlOptica Focal-πShaper (piShaper) Q Flat Top Beam Shapers are used to transform Gaussian beams to flat-top profiles after focusing through a lens. This is accomplished by transforming the Gaussian beam to airy disk profiles immediately after the piShaper. These beam shapers feature a compact design with inner and outer threading, making them easy to integrate into equipment. AdlOptica Focal-πShapers are advantageous for beam shaping in micromachining applications, including scribing and PCB drilling, as well as micro-welding applications. Multiple models are available at Nd:YAG, Ti:Sapphire, and Infrared wavelengths with compatible input beam diameters as small as 2.5mm and up to 23mm.

Technical Information

