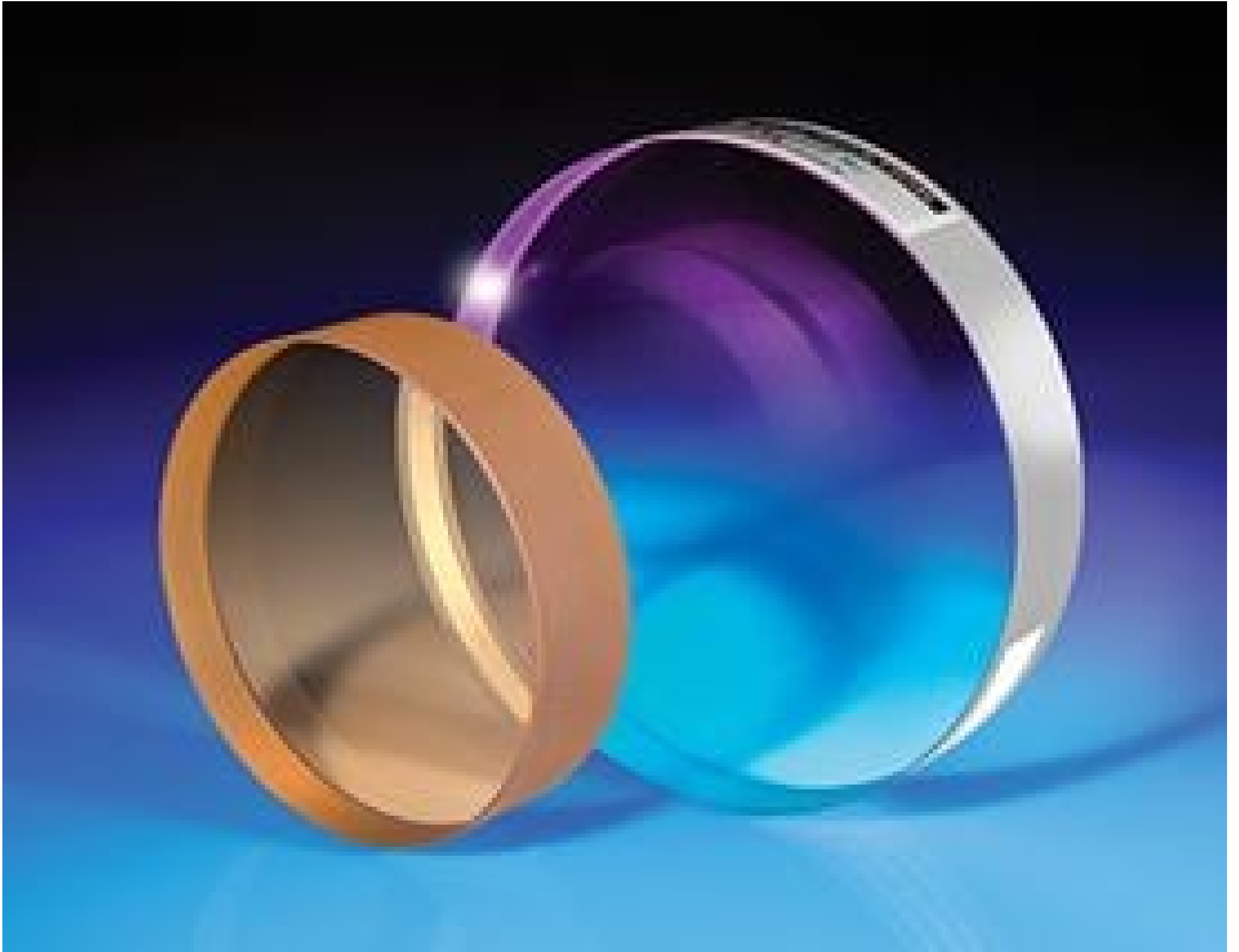


[See all 39 Products in Family](#)

**TECHSPEC® 152.4mm Dia.  $\lambda/20$  Fused Silica Optical Flat**



Stock #47-575-000 **14 In Stock**

MRP ₹3,00,148

**Price inclusive of all taxes**

**ADD TO CART**

| Volume Pricing |                               |
|----------------|-------------------------------|
| Qty 1-5        | ₹3,00,148 each                |
| Qty 6-10       | ₹2,67,359 each                |
| Qty 11-25      | ₹2,51,721 each                |
| Need More?     | <a href="#">Request Quote</a> |

Product Downloads

**General**

Interferometry Window **Type:**

Includes a certificate of calibration. **Note:**

**Physical & Mechanical Properties**

|                      |  |
|----------------------|--|
| 137.20               | <b>Clear Aperture CA (mm):</b>             |
| 6.00 +0.00/-0.04     | <b>Diameter (inches):</b>                  |
| 152.40 +0.00/-1.00   | <b>Diameter (mm):</b>                      |
| 1.00 ±0.08           | <b>Thickness (inches):</b>                 |
| 25.40 ±2.0           | <b>Thickness (mm):</b>                     |
| ≤3                   | <b>Parallelism (arcmin):</b>               |
| Protective as needed | <b>Bevel:</b>                              |
| Single Surface       | <b>Construction:</b>                       |
| Fine Ground          | <b>Edges:</b>                              |
| 0.16                 | <b>Poisson's Ratio:</b>                    |
| 73                   | <b>Young's Modulus (GPa):</b>              |
| 522.00               | <b>Knoop Hardness (kg/mm<sup>2</sup>):</b> |

## Optical Properties

|                              |   |
|------------------------------|---|
| Uncoated                     | <b>Coating:</b>                             |
| Clear                        | <b>Color:</b>                               |
| <a href="#">Fused Silica</a> | <b>Substrate:</b> <input type="checkbox"/>  |
| 1.458                        | <b>Index of Refraction (n<sub>d</sub>):</b> |
| 60-40                        | <b>Surface Quality:</b>                     |
| 67.8                         | <b>Abbe Number (v<sub>d</sub>):</b>         |
| 200 - 2200                   | <b>Wavelength Range (nm):</b>               |
| λ/20                         | <b>Surface Flatness (P-V):</b>              |

## Material Properties

|   |   |
|---|---|
| 2.20  | <b>Density (g/cm<sup>3</sup>):</b>                                |
| 0.52 (+5 to +35°C)<br>0.57 (0 to +200°C)<br>0.48 (-100 to +200°C) | <b>Coefficient of Thermal Expansion CTE (10<sup>-6</sup>/°C):</b> |

## Regulatory Compliance

|   |                                    |
|---|------------------------------------|
| <a href="#">Compliant</a>   | <b>RoHS 2015:</b>                  |
| <a href="#">Compliant</a>   | <b>Reach 197:</b>                  |
| <a href="#">View</a>  | <b>Certificate of Conformance:</b> |
| Germany   | <b>Country of Origin:</b>          |
| Edmund Optics India Private Limited<br>267, Greystone Building, Second Floor,<br>6th Cross Rd, Binnamangala,<br>Stage 1, Indiranagar, Bengaluru,<br>Karnataka, India 560038<br>Phone: +91- 80-6845 0000 | <b>Imported By:</b>                |

## Product Details

- Sizes Ranging from 1/2" Diameter to 14" Diameter
- Each λ/20 Flat 76.2mm and Larger Includes a Certificate of Calibration
- Available with Standard Metallic Mirror Coatings: [λ/10 and λ/20 Mirrors](#)

TECHSPEC® Single Surface Optical Flats are used as a reference (test plate) against which the flatness of an unknown surface may be compared. Each piece is precision polished by our master opticians and tested on a Zygo interferometer to insure the surface flatness. The secondary surfaces of our single surface flats are pitch polished to window quality for viewing the interference pattern. TECHSPEC Single Surface Optical Flats ship in a durable

storage case for permanent protection.  $\lambda/20$  flats that are 76.2mm or larger also include a certificate of calibration.

---

;