

TECHSPEC®

12.7mm Dia. x 100mm ROC, Uncoated, Concave Laser Mirror



TECHSPEC Uncoated Concave Mirrors

Stock #27-586 **NEW** 1 In Stock

1







MRP ₹10,896

Price inclusive of all taxes

ADD TO CART

Volume Pricing	
Qty 1-5	₹10,896 each
Qty 6-25	₹10,291 each
Qty 26+	₹9,938 each
Need More?	Request Quote

Product Downloads

-  STEP:step
-  PDF Drawing:pdf
-  IGES:igs
-  eDrawing:eprt
-  EO Spec Sheet
-  [Download All](#)

General

Type: Concave Mirror

Physical & Mechanical Properties

Diameter (mm): 12.70 +0.00/-0.12	Back Surface: Commercial Polish
Center Thickness CT (mm): 5.80	Clear Aperture (%): 90
Edge Thickness ET (mm): 6.00 ±0.2	

Optical Properties

Coating: Uncoated	Effective Focal Length EFL (mm): 50.00
Substrate: Fused Silica (Corning 7980)	Radius R₁ (mm): 100.00
Surface Quality: 20-10	Irregularity (P-V) @ 632.8nm: λ/10
Radius of Curvature (mm): 100.00	

Regulatory Compliance

RoHS 2015: Compliant	Certificate of Conformance: View
Reach 253: Compliant	
Country of Origin: Vietnam	Imported By: Edmund Optics India Private

Limited
267, Greystone
Building,
Second Floor,
6th Cross Rd,
Binnamangala,
Stage 1,
Indiranagar,
Bengaluru,
Karnataka,
India 560038
Phone: +91-
80-6845 0000

Need different specs or modifications?

Edmund Optics offers comprehensive custom manufacturing services for optical and imaging components tailored to your specific application requirements. Whether in the prototyping phase or preparing for full-scale production, we provide flexible solutions to meet your needs. Our experienced engineers are here to assist—from concept to completion.

Our capabilities include:

- Custom dimensions, materials, coatings, and more
- High-precision surface quality and flatness
- Tight tolerances and complex geometries
- Scalable production—from prototype to volume

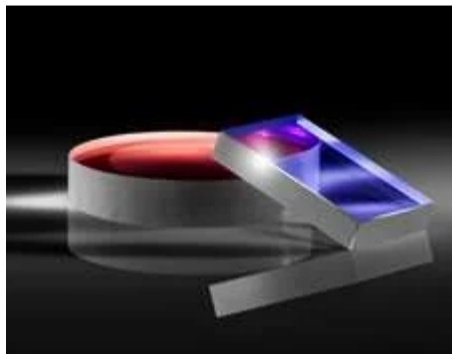
Learn more about our [custom manufacturing capabilities](#) or submit an inquiry [here](#).

Product Details

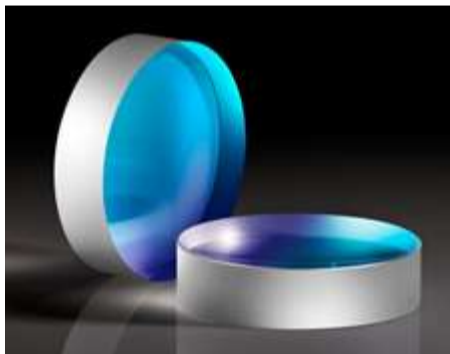
- High Precision Fused Silica Mirror Substrates
- Large Selection of Diameters and Focal Lengths
- Custom Coating Options Available

TECHSPEC® Uncoated Concave Laser Mirrors offer high precision 20-10 surface quality ideal for laser beam focusing applications. Featuring fused silica substrates, these concave mirrors are resistant to thermal shock and are available in focal lengths from 25mm to 500mm. TECHSPEC Uncoated Concave Laser Mirrors are ideal for applications in environments with temperature fluctuations. Custom coating options including protected metal coatings and dielectric mirror coatings are available.

Related Products



Laser Mirror Substrates



Concave Laser Line Mirrors



Ultrafast-Enhanced Silver Concave Laser Mirrors

Resources

Media Type

- Application Note
- Technical Tool
- Trending in Optics
- Video
- Published Article
- FAQ

APPLICATION NOTE

An Introduction to Optical Coatings

TECHNICAL TOOL

Gaussian Beams Calculator

APPLICATION NOTE

Effects of Laser Mirror Surface Flatness

- Glossary
- Scientific Paper

↑ TRENDING IN OPTICS

High
Reflectivity
Mirrors for
Laser...

WEBINARS

High
Reflectivity
Mirrors for
Laser...

APPLICATION NOTE

Highly
Reflective
Coatings

[View More](#)