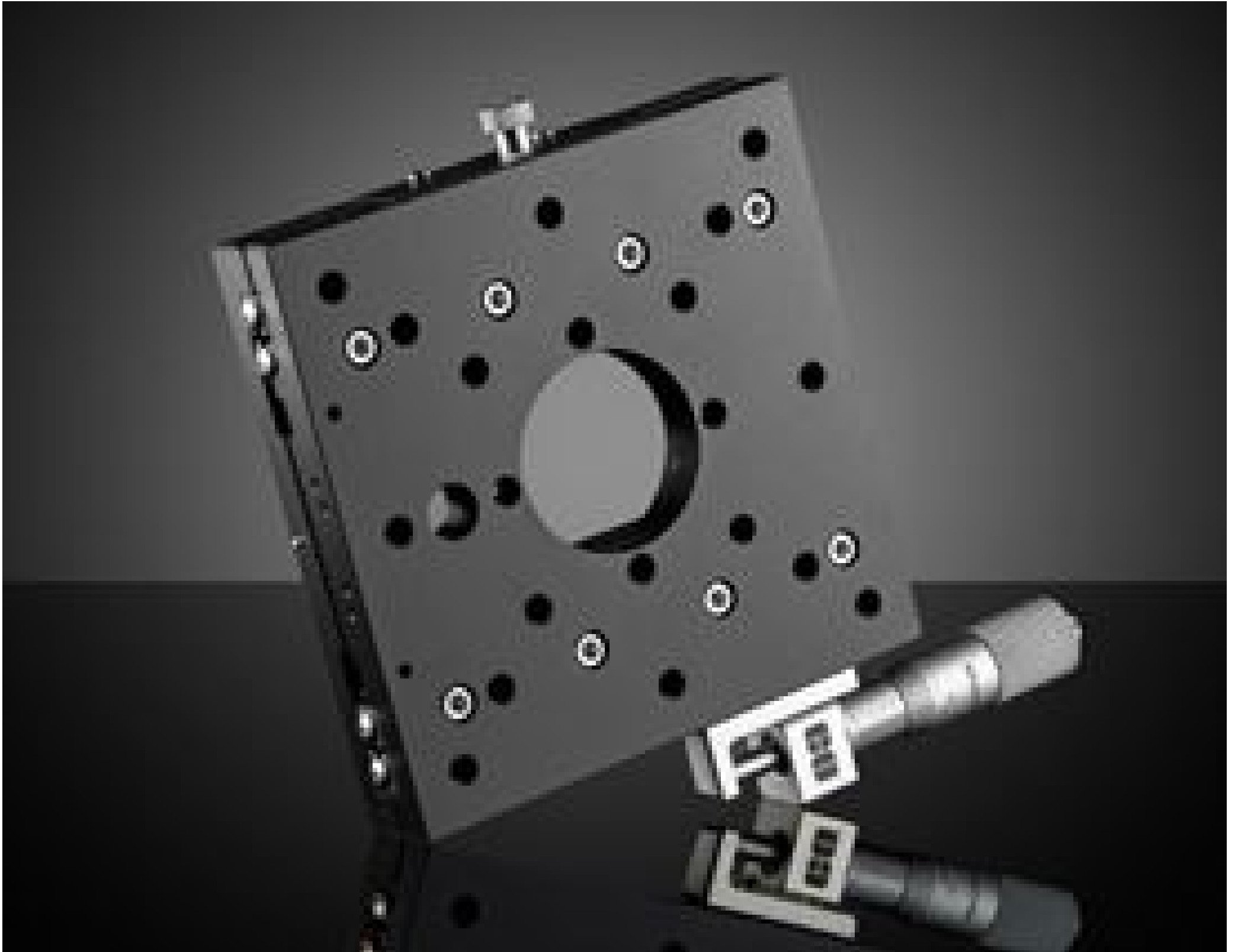


[See all 60 Products in Family](#)

TECHSPEC® 125mm, Side Drive, Thru-Hole, English Micrometer Stage



Stock #66-466 **4 In Stock**

- 1 + MRP ₹75,668

Price inclusive of all taxes

ADD TO CART

Volume Pricing	
Qty 1-2	₹75,668 each
Qty 3+	₹66,325 each
Need More?	Request Quote

Product Downloads

General

English **Type:**

Physical & Mechanical Properties

Linear (X) **Type of Movement:**

Crossed Roller Bearing **Guide System:**

Drive Orientation:

Side Drive	
125 x 125	Stage Size (mm):
1	Travel (inches):
M42 x 0.75	Center Hole:
Aluminium Stage	Construction:
0.635	Leadscrew Pitch (mm):
20	Load Capacity (kg):
4.92 x 4.92	Stage Size (inches):
2	Straight Line Accuracy (µm):
30	Pitch (arcsec):
25	Yaw (arcsec):

Hardware & Interface Connectivity

English Micrometer	Type of Drive:
--------------------	-----------------------

Threading & Mounting

(1) M42 x 0.75, (20) 1/4-20	Mounting Threads:
-----------------------------	--------------------------

Regulatory Compliance

Exempt	RoHS 2015:
View	Certificate of Conformance:
Contains SVHC(s)	REACH 241:
Japan	Country of Origin:
Edmund Optics India Private Limited 267, Greystone Building, Second Floor, 6th Cross Rd, Binnamangala, Stage 1, Indiranagar, Bengaluru, Karnataka, India 560038 Phone: +91- 80-6845 0000	Imported By:

Product Details

- Four Sizes Ranging from 30 x 30mm to 125 x 125mm
- Thru-Hole Design for Optical Path Transmission
- English and Metric Hole Patterns Available
- Micrometer and Lead Screw Drive Options

TECHSPEC® Crossed-Roller Bearing Linear Translation Stages (Thru-Hole Model) feature a high performance crossed roller bearing guide system that provides these stages with high load capacity, rigidity, and accuracy. This advanced bearing guide system allows the single axis translations stages to have precise positioning with straight line accuracy of 2µm. TECHSPEC® Crossed-Roller Bearing Linear Translation Stages (Thru-Hole Model) are able to integrate with other stage sizes as well as integrate with TECHSPEC® Manual Translation Stages, providing users the flexibility to create configurations with a number of axes. Translation stages are available with either English or Metric hole patterns for easy incorporation into existing optomechanical systems.

Thru-Hole Translational Stages are available with the following thread centered on their top plate: 5/16"-24 thread on our 30mm stages for use with our [#38-534](#) Pinhole Adapter, S-Mount (M12 x 0.5) on our 40mm stages, C-Mount (1"-32 TPI) on our 70mm stages, and T-Mount (M42 x 0.75) on our 125mm stages for compatibility with our C-, T-, and S-Mount Tube System Components.

All translation stages are class 100 (ISO 5) clean room compatible and available with a micrometer or lead screw drive with either center or side drive configuration. Leadscrew drives offer 0.5mm pitch, Metric micrometers offer 0.5mm pitch with 0.01mm divisions, and English micrometers offer 0.025" pitch with 0.001" divisions.

[TECHSPEC Z-Axis Brackets](#) are available to use with our translation stages to configure your own X-Y-Z multi-axis positioning system. TECHSPEC Bottom Adapter Plates provide an easy and convenient way of mounting 30mm and 40mm stages to standard breadboards. No adapter plate is required for our 70mm and 125mm translation stages which can be mounted directly onto breadboards.

Technical Information

