

[« See all 227 Products in Family](#)
[All Products](#) / [Optics](#) / [Optical Lenses](#) / [Cylinder Lenses](#) / [Illumination Grade Cylinder Lenses](#) / [Illumination Grade PCX Cylinder Lenses](#)
TECHSPEC®

12.5mm Dia x 25mm FL MgF₂ Coated, Illumination Grade PCX Cylinder Lens


 Stock #48-353 **14 In Stock**

- 1 +

MRP ₹8,420

Price inclusive of all taxes

[ADD TO CART](#)

Volume Pricing	
Qty 1-5	₹8,420 each
Qty 6-25	₹7,603 each
Qty 26-49	₹7,218 each
Need More?	Request Quote

Product Downloads	
STEP:step	Curve:pdf
PDF Drawing:pdf	IGES:igs
Zemax:zar	Zemax:zmx
eDrawing:eprt	Code V:seq
EO Spec Sheet	Download All

General

Type: Cylinder Lens, Plano-Convex


Physical & Mechanical Properties

Diameter (mm):	12.50	Center Thickness CT (mm):	2.90
Center Thickness Tolerance (mm):	±0.1	Dimensional Tolerance (mm):	+0.0/-0.2
Edge Thickness ET (mm):	1.29		

Optical Properties

Effective Focal Length EFL (mm):	25.00	Substrate: N-BK7	
f/#:	2	Numerical Aperture NA:	0.25
Coating:	MgF ₂ (400-700nm)	Wavelength Range (nm):	400 - 700
Back Focal Length BFL (mm):	23.09	Coating Specification:	R _{avg} ≤1.75% @ 400 - 700nm
Focal Length Tolerance (%):	±3	Radius R₁ (mm):	12.96

Surface Quality: 60-40

Damage Threshold, By Design: 10 J/cm² @ 532nm, 10ns 

Regulatory Compliance

RoHS 2015: **Compliant**

Reach 209: **Compliant**

Certificate of Conformance: **View**

Country of Origin: China

Imported By: Edmund Optics India Private Limited
267, Greystone Building,
Second Floor,
6th Cross Rd,
Binnamangala,
Stage 1,
Indiranagar,
Bengaluru,
Karnataka,
India 560038
Phone: +91-80-6845 0000

Need different specs or modifications?

Edmund Optics offers comprehensive custom manufacturing services for optical and imaging components tailored to your specific application requirements. Whether in the prototyping phase or preparing for full-scale production, we provide flexible solutions to meet your needs. Our experienced engineers are here to assist—from concept to completion.

Our capabilities include:

- Custom dimensions, materials, coatings, and more
- High-precision surface quality and flatness
- Tight tolerances and complex geometries
- Scalable production—from prototype to volume

Learn more about our [custom manufacturing capabilities](#) or submit an inquiry [here](#).

Product Details

- N-BK7 Substrate for Broadband Performance
- Cost-Effective for OEM Integration
- Multiple Coating Options Available

TECHSPEC® Illumination Grade PCX Cylinder Lenses are similar to Plano-Convex (PCX) lenses in profile, but include a portion of a cylinder instead of a sphere. These lenses focus light in one dimension and can transform a point of light into a line. TECHSPEC® Illumination Grade PCX Cylinder Lenses are available in circular and rectangular versions, along with multiple coating options. Cylinder lenses are ideal for line projection in machine vision applications or guidance systems.

Note: For negative focal length cylinder lenses, see our [TECHSPEC® Illumination Grade PCV Cylinder Lenses](#).

LASER OPTICS MADE BY EDMUND OPTICS®

LEARN MORE

Technical Information

Coating Curves

MgF₂ (400-700nm)



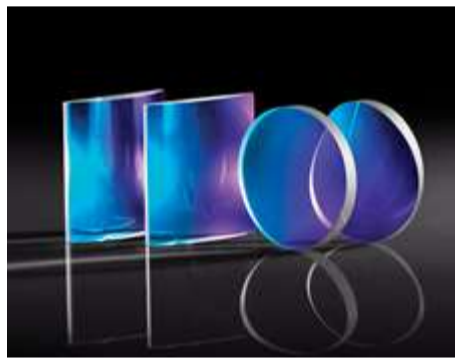
SHIFT + SELECT an area on CURVE to zoom

Please note that coating performance outside each product's specified design range is theoretical and may vary.

Related Products



Illumination Grade PCV Cylinder Lenses



Imaging Grade PCX Cylinder Lenses

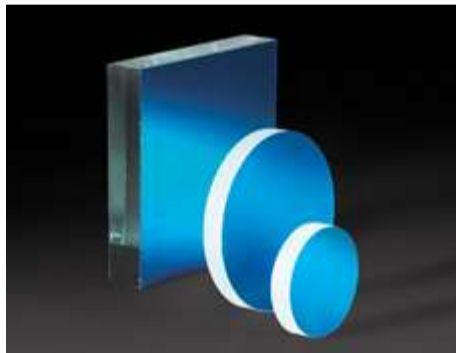


Laser Grade Laser Line Cylinder Lenses



Laser Grade Broadband Cylinder Lenses

Frequently Purchased Together



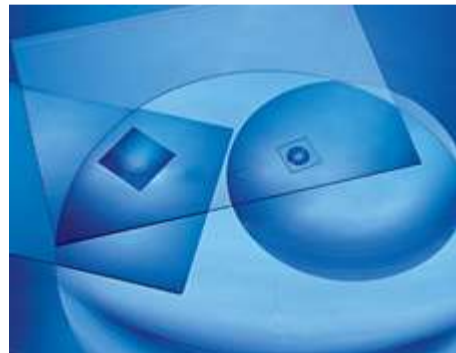
#31-497 - 64 x 97mm Laser Diode Mirror
₹5,599

Qty



#32-476 - 20.0mm Dia. x 100.0mm FL, MgF₂ Coated, Plano-Convex Lens
₹4,086

Qty



#32-588 - 1.5" x 1.5", 1.0" FL, Aspheric Fresnel Lens
₹4,237

Qty



#32-855 - 12.0mm Dia. x 60.0mm FL, MgF₂ Coated, Plano-Convex Lens
₹4,086

Qty

Resources

Media Type

APPLICATION NOTE

Anti-Reflection (AR) Coatings

APPLICATION NOTE

TRENDING IN OPTICS

- Application Note
- Trending in Optics
- Published Article
- FAQ
- Glossary
- Video

Laser Beam
Shaping
Overview

Non-Circular
Optics for
System
Miniaturization

 APPLICATION NOTE

What are
Cylinder
Lenses?

 APPLICATION NOTE

Considerations
When Using
Cylinder
Lenses

 PUBLISHED ARTICLE

Cylinder
Lenses for
Beam Shaping

[View More](#)