

1200 Grooves, 50mm Square, 500nm Ruled Diffraction Grating



Reflective Ruled Diffraction Gratings

Stock #43-006 12 In Stock

1 MRP ₹29,763

Price inclusive of all taxes

ADD TO CART

Volume Pricing	
Qty 1-9	₹29,763 each
Qty 10-24	₹26,786 each
Need More?	Request Quote

Product Downloads	
STEP:step	Curve:pdf
PDF Drawing:pdf	IGES:igs
eDrawing:eprt	
EO Spec Sheet	Download All

General

Type: Reflective Diffraction Grating

Physical & Mechanical Properties

Dimensions (mm): 50.0 x 50.0 ±0.5	Clear Aperture (%): 90
Construction: Ruled Grating	Direction of Grooves: Parallel to Short Dimension
Length (mm): 50.00	Thickness (mm): 9.50 ±0.5
Width (mm): 50.00	Alignment of Grooves to Edge (°): ±0.5

Optical Properties

Groove Density (grooves/mm): 1200	Blaze Wavelength (nm): 500
Blaze Angle (°): 17.45	Coating: Bare Aluminum
Substrate: Float Glass	Absolute Peak Efficiency, Typical (%): 85
Peak Efficiency Avg, Typical (%): >73	

Regulatory Compliance

RoHS 2015: Compliant	Certificate of Conformance: View
Reach 247: Compliant	
Country of Origin: United States	Imported By: Edmund Optics India Private

Limited
267, Greystone
Building,
Second Floor,
6th Cross Rd,
Binnamangala,
Stage 1,
Indiranagar,
Bengaluru,
Karnataka,
India 560038
Phone: +91-
80-6845 0000

Product Details

- Up to 80% Efficiency
- Bare Aluminum Coating
- Blaze Wavelength Options from 250 to 1600nm

Reflective Ruled Diffraction Gratings are optical components that separate (diffract) white (polychromatic) light into its component wavelengths. Theoretical resolving power is directly proportional to the number of grooves per millimeter ruled into the master grating. The blaze angle and groove spacing determine the specific wavelength and spectral region where the grating has its maximum efficiency. Reflective Ruled Diffraction Gratings are high quality, instrument-grade gratings that are ideal when high efficiency is the primary concern in devices such as monochromators and spectrometers. Each grating is fabricated from a highly accurate master grating that is copied many times. The duplication process is described below for replicated gratings.

Diffraction ruled gratings are used in a variety of monochromators for research, student and industry use. Almost all commercially available spectrophotometers (ultraviolet, visible, infrared, fluorescence, Raman, atomic absorption) utilize diffraction gratings to select specific wavelengths or scan over a wavelength interval. Generally, replicated ruled gratings should be used when high peak efficiency and throughput is required. Replicated holographic gratings should be used when minimum stray light is critical and high resolution is needed. Note: Damage thresholds for both ruled and holographic gratings are 350 milli-joules/cm² for pulsed lasers and 40 Watts/cm² for CW lasers.

Handling Gratings: Gratings require special handling, making them prone to fingerprints and aerosols. Gratings should only be handled by the edges. Before attempting to clean a grating, please [contact us](#).

Manufacturing of Ruled Gratings

Ruled diffraction gratings are produced by ruling a series of closely spaced, straight parallel grooves into an optically flat aluminum coated substrate, known as the "master grating." Precise, interferometrically-controlled ruling engines utilize a very fine diamond tool to form a sawtooth-shaped groove profile at a given angle (commonly referred to as the blaze angle) on the surface of a prepared substrate. The replication process begins with the surface contour of a ruled master grating being vacuum deposition-coated with an extremely thin separation layer. An aluminum coating is then deposited on top of this separation layer. Then, an epoxy-coated flat glass substrate is placed on top of the layer-covered master, duplicating the grooved surface. The combination is cured and the process is finished when the replicated grating is separated from the master grating.

Technical Information

Special Handling

These optics require special handling to avoid damage and ensure long-term performance. Proper handling, cleaning, and storage are essential to maintain optical quality. Explore our [Optics Cleaning Resources](#) for step-by-step guides and best practices. For personalized assistance, [Email us](#) or [Chat](#) with our technical support team.



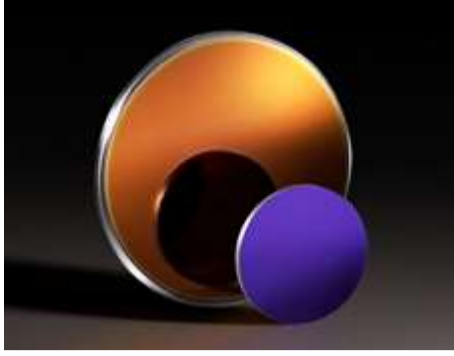
Component Handling Tools

Related Products



Adjustable Grating Mounts

Frequently Purchased Together



#33-968 - 1.65 μ m, 12.5mm Diameter, Infrared Longpass Filter
₹21,187

Qty



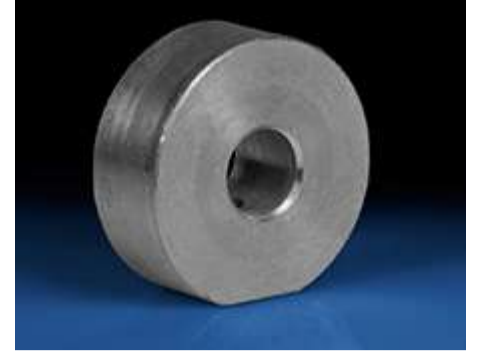
#36-426 - Norland Optical Adhesive NOA 65, 1 oz. Application Bottle
₹4,407

Qty



#36-481 - 3.0" Angle Mirror Mount
₹25,223

Qty



#38-944 - 0.316" ID, Fiber Optic Adapter SX-6
₹5,072

Qty

Resources

Media Type

- Application Note
- Video
- FAQ
- Glossary

WEBINARS

Helpful Tips for Selecting the Correct Diffraction...

APPLICATION NOTE

All About Diffraction Gratings

VIDEO

Richardson Gratings™ Unboxing

? FAQ

What is the difference between holographic...

? FAQ

How do the efficiency curves relate to the actual...

? FAQ

What is the difference between Rowland circl...

[View More](#)