

**TECHSPEC® 116mm Dia x 1524.7mm FL Achromatic Lens, Mtd**



Stock #54-568 **3 In Stock**

MRP ₹1,50,326

**i** Price inclusive of all taxes

**ADD TO CART**

Volume Pricing	
Qty 1-5	₹1,50,326 each
Qty 6-25	₹1,27,626 each
Qty 26-49	₹1,20,059 each
Need More?	<a href="#">Request Quote</a>

Product Downloads

**General**

Achromatic Lens **Type:**

**Physical & Mechanical Properties**

116.00 +0.00/-0.12 **Diameter (mm):**

98.00 **Clear Aperture CA (mm):**

5.00	<b>Centering (arcmin):</b>
12.37	<b>Center Thickness CT 1 (mm):</b>
8.76	<b>Center Thickness CT 2 (mm):</b>
-2169.77	<b>Radius R<sub>4</sub> (mm):</b>
23.35	<b>Edge Thickness ET (mm):</b>
Mounted, Airspaced 0.10mm	<b>Construction:</b>
Protective as needed	<b>Bevel:</b>

## Optical Properties

1,524.73	<b>Effective Focal Length EFL (mm):</b>
±1	<b>Focal Length Tolerance (%):</b>
1514.53	<b>Back Focal Length BFL (mm):</b>
587.6	<b>Focal Length Specification Wavelength (nm):</b>
908.13	<b>Radius R<sub>1</sub> (mm):</b>
-626.59	<b>Radius R<sub>2</sub> (mm):</b>
-625.40	<b>Radius R<sub>3</sub> (mm):</b>
<a href="#">N-BK7 / N-SF2</a>	<b>Substrate:</b> <input type="checkbox"/>
60-40	<b>Surface Quality:</b>
14.9	<b>f#:</b>
0.03	<b>Numerical Aperture NA:</b>
MgF <sub>2</sub> (400-700nm)	<b>Coating:</b>
R <sub>avg</sub> ≤1.75% @400 - 700nm	<b>Coating Specification:</b>
400 - 700	<b>Wavelength Range (nm):</b>

## Threading & Mounting

28.35	<b>Mount Thickness (mm):</b>
M112 x 1.0	<b>Mounting Threads:</b>

## Regulatory Compliance

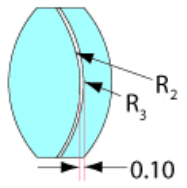
<a href="#">View</a>	<b>Certificate of Conformance:</b>
United States	<b>Country of Origin:</b>
Edmund Optics India Private Limited 267, Greystone Building, Second Floor, 6th Cross Rd, Binnamangala, Stage 1, Indiranagar, Bengaluru, Karnataka, India 560038 Phone: +91- 80-6845 0000	<b>Imported By:</b>

## Product Details

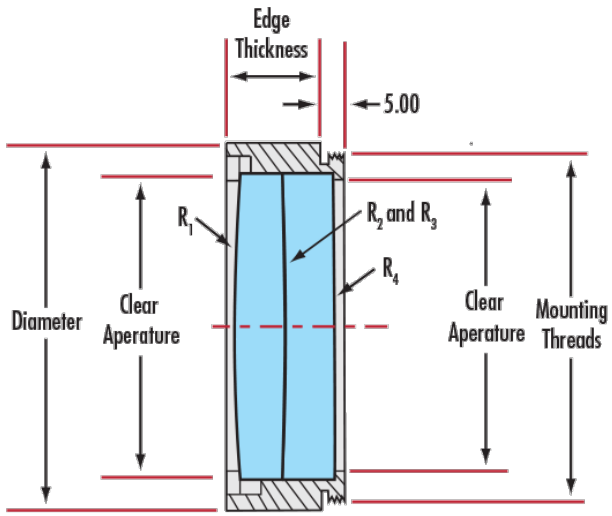
- Offered in Cemented or Air-Spaced Designs
- Mounted Versions Available for Easy Integration
- Feature MgF<sub>2</sub> Anti-Reflection Coating

TECHSPEC® Large Precision Achromatic Lenses offer near-diffraction limited performance across the designated wavelength range. These color-corrected achromatic lenses feature long focal lengths and are available in either cemented or air-spaced designs. The lenses have a MgF<sub>2</sub> anti-reflection coating and are available in diameters up to 140mm. TECHSPEC® Large Precision Achromatic Lenses, in the mounted version, feature a male mounting thread for easy integration into optical systems. Adhesive foil spacers and mounting instructions are included for unmounted, air-spaced achromatic lenses.

## Technical Information



Airspaced



## Coating Curves