

[See all 17 Products in Family](#)

100mm, Green 530nm, MicroBrite Brightfield Ring Light

See More by [Advanced Illumination](#)



Stock #18-577 **1 In Stock**

MRP ₹1,32,219

Price inclusive of all taxes

ADD TO CART

Volume Pricing	
Qty 1+	₹1,32,219 each
Need More?	Request Quote

Product Downloads

General

Model Number:
RL208M-100530IC

LED Lifetime (hours):
50,000

Type of Illumination:
LED Illuminator

Note:
Optional Manual Intensity Adjustment [#86-887](#) and [#89-555](#) are Available

Advanced Illumination **Manufacturer:**

Ring Light **Geometry:**

Constant **Illumination Mode:**

Physical & Mechanical Properties

19.09 **Height (mm):**

100 **Inner Diameter (mm):**

145.34 **Outer Diameter (mm):**

100.00 x 145.34 x 19.09 **Dimensions (mm):**

400 **Weight (g):**

Optical Properties

Green **Color:**

530 **Wavelength (nm):**

Electrical

0.27A **Maximum Input Current:**

Hardware & Interface Connectivity

Flying Leads **Connector:**

24V **Input Voltage (V):**

Power Supply:
Power Supply Required and Sold Separately:
USA: [#66-855](#)
Europe: [#66-855](#)
Japan: [#89-513](#)
Korea: Not Available
China: [#66-855](#)

Threading & Mounting

M4 x4 **Mounting Threads:**

Environmental & Durability Factors

0 - 60 **Operating Temperature (°C):**

IP50 **Environmental Rating:**

Regulatory Compliance

[Exempt](#) **RoHS 2015:**

[View](#) **Certificate of Conformance:**

[Contains SVHC\(s\)](#) **Reach 233:**

United States **Country of Origin:**

Imported By:
Edmund Optics India Private Limited
267, Greystone Building, Second Floor,
6th Cross Rd, Binnamangala,
Stage 1, Indiranagar, Bengaluru,
Karnataka, India 560038
Phone: +91- 80-6845 0000

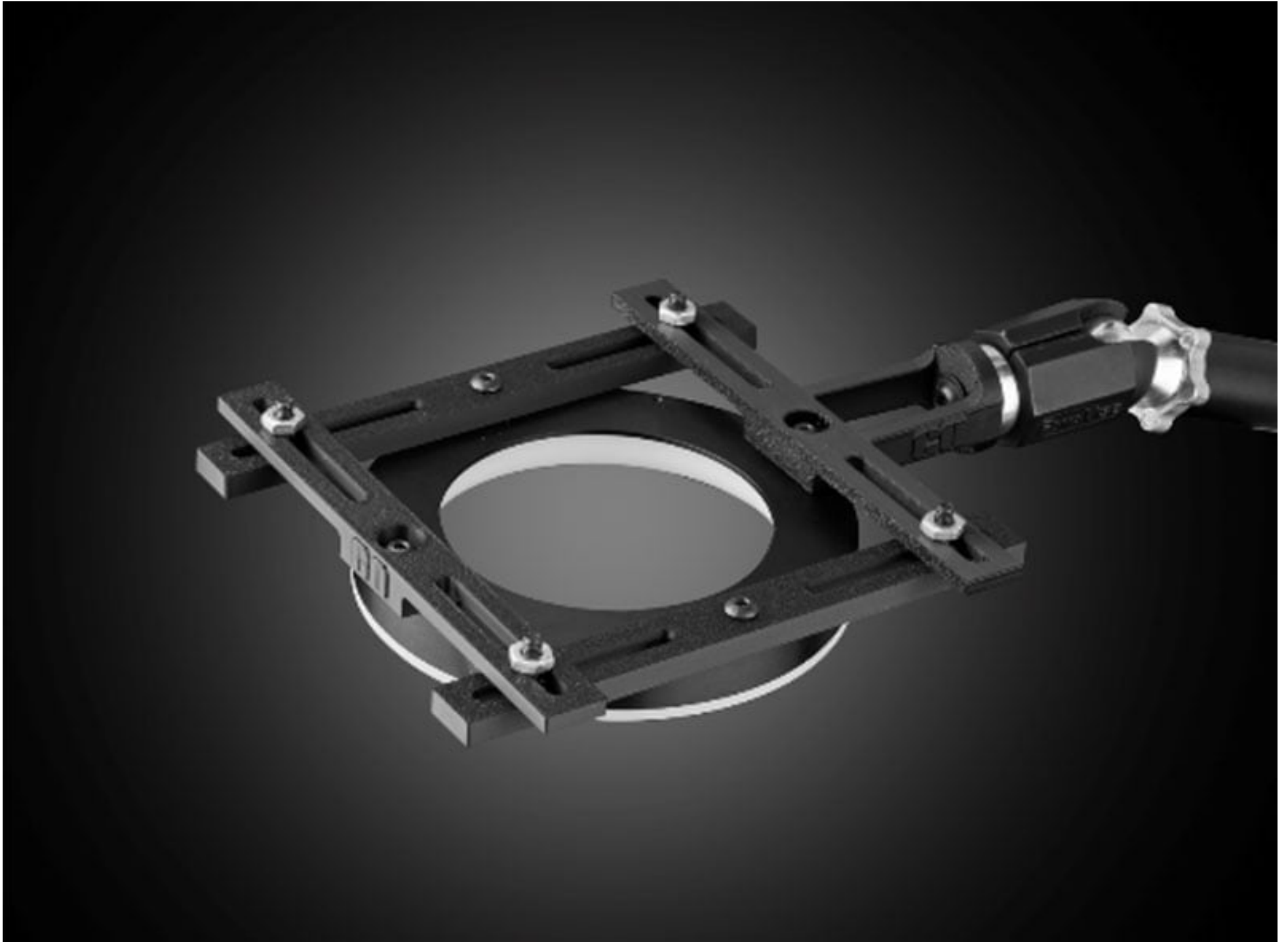
Product Details

- High Intensity Output up to 41,000 Lux
- 2"-10" Working Distance (Size Dependent)
- Full Range of Wavelengths Available
- Optional Manual Intensity Adjustments ([#86-887](#) and [#89-555](#)) Recommended

Advanced Illumination MicroBrite Brightfield Ring Lights offer high intensity machine vision lights in a compact form factor. These ring lights produce an intense light output up to 41,000 Lux at a working distance of 180mm, are available in a full range of wavelengths, and are offered in two standard sizes. These ring lights provide object coverage from 2" to 6" depending on working distance. Advanced Illumination MicroBrite Brightfield Ring Lights are ideal for standard, around-the-lens applications requiring high-intensity illumination sources such as high-speed inspections, factory automation, and machine vision.

Note: Requires 24V power supply #66-855. Manual Intensity Adjustment #86-887 and #89-555 are recommended and sold separately.

3D-Printable Mount Files



Ring Light Configuration

[Download Now](#)

Designed for use with the [Articulating Arm Mounting Systems](#), these 3D-printed mounts allow easy positioning of lights in brightfield or darkfield setups. The design is based on mounting illumination to 1/4-20" breadboards or into 80/20 extrusion systems, but can be adapted based on user needs. Mounts are available for ring, bar, line, and inline spot lights.



Application Note

Illumination Mounts for Machine Vision Applications

[Read](#)



Video

Assembly of 3D Printed Mounts for Common Illumination Geometries

[Watch](#)