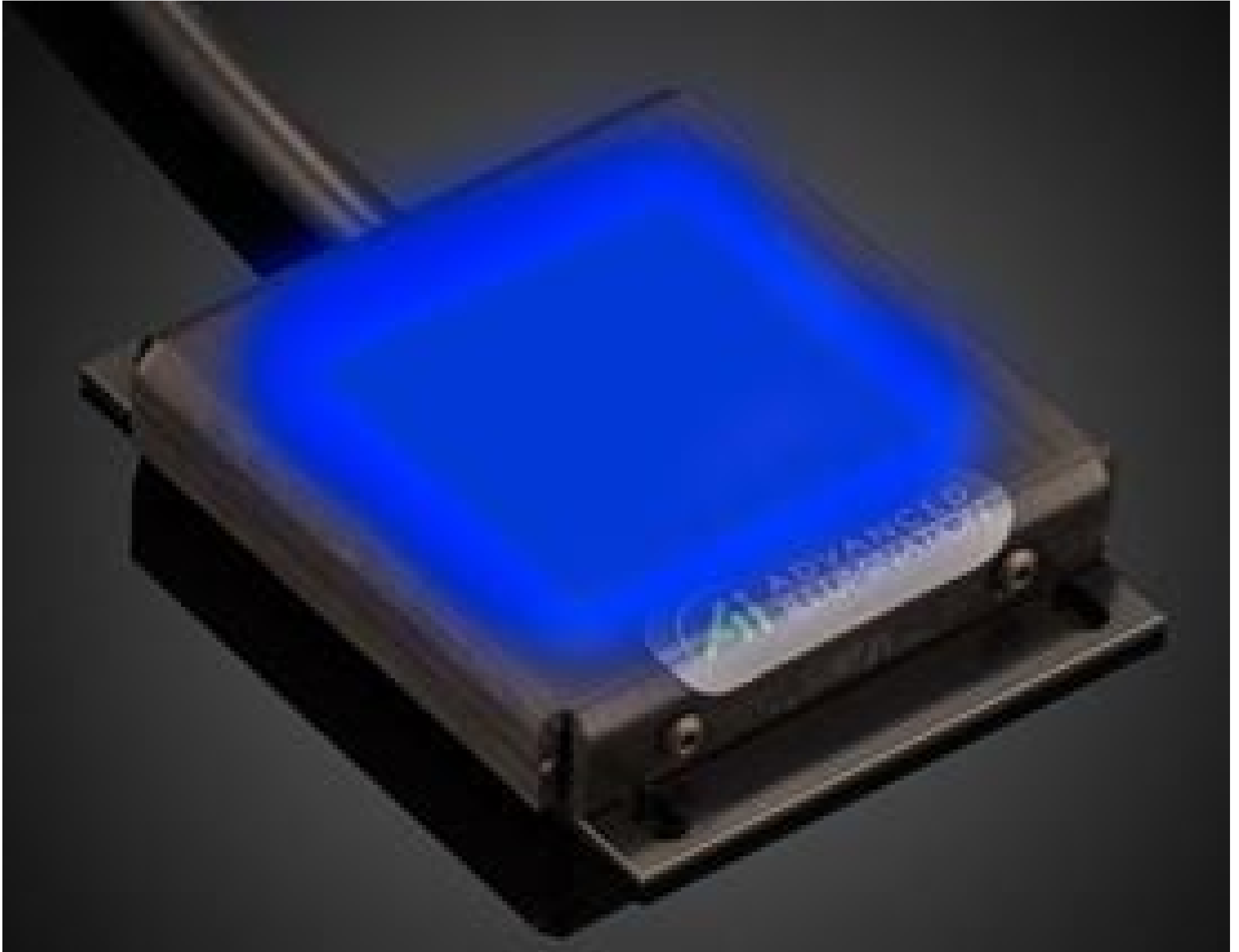


[See all 13 Products in Family](#)

100 x 100mm, Blue 455nm, MicroBrite High Intensity Edge-Lit Backlights

See More by [Advanced Illumination](#)



Stock #18-554 **1 In Stock**

MRP ₹1,04,607

Price inclusive of all taxes

ADD TO CART

Volume Pricing	
Qty 1+	₹1,04,607 each
Need More?	Request Quote

Product Downloads

General

BT100100-455IC **Model Number:**

50,000 **LED Lifetime (hours):**

LED Illuminator **Type of Illumination:**

Note:
Optional Manual Intensity Adjustment [#86-887](#) and [#89-555](#) are Available

Advanced Illumination

Manufacturer:

Backlight

Geometry:

Constant

Illumination Mode:

Physical & Mechanical Properties

120.02 x 104.60 x 11.25

Dimensions (mm):

195.04

Weight (g):

3.36 x 3.31

Active Area (inches):

Optical Properties

Blue

Color:

455

Wavelength (nm):

Hardware & Interface Connectivity

Flying Leads

Connector:

24V

Input Voltage (V):

Environmental & Durability Factors

0 - 60

Operating Temperature (°C):

IP50

Environmental Rating:

Regulatory Compliance

[Exempt](#)

RoHS 2015:

[View](#)

Certificate of Conformance:

[Contains SVHC\(s\)](#)

Reach 233:

United States

Country of Origin:

Imported By:
Edmund Optics India Private Limited
267, Greystone Building, Second Floor,
6th Cross Rd, Binnamangala,
Stage 1, Indiranagar, Bengaluru,
Karnataka, India 560038
Phone: +91- 80-6845 0000

Product Details

- High Intensity Machine Vision Illuminator
- Edge-to-Edge Uniform, Low Heat Illumination
- Thin, Compact Form Factor
- Optional Manual Intensity Adjustments ([#86-887](#) and [#89-555](#)) Recommended

Advanced Illumination MicroBrite High Intensity Edge-Lit Backlights offer high performance machine vision backlighting in thin, compact housings and outperform higher cost comparable surface mount lights. These bright backlights produce low heat, uniform lighting. To simplify system integration, these thin backlights include a panel mount and are available in the most common machine vision wavelengths. Advanced Illumination MicroBrite High Intensity Edge-Lit Backlights feature ultra-thin profiles and are ideal for applications including edge-detection, part location, hole detection and object gauging.

Note: Requires 24V power supply [#66-855](#). Manual Intensity Adjustment [#86-887](#) and [#89-555](#) are recommended and sold separately.