

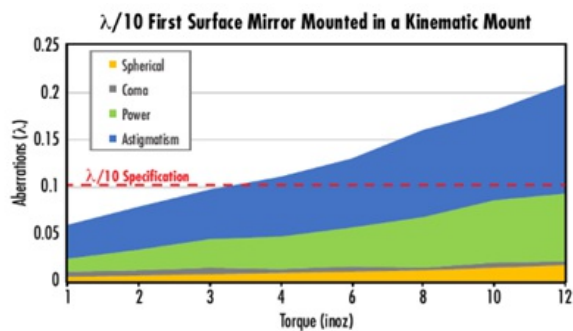
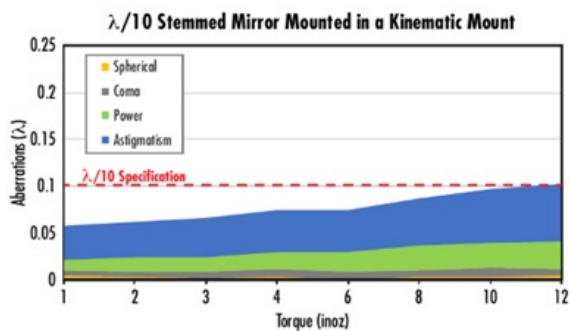
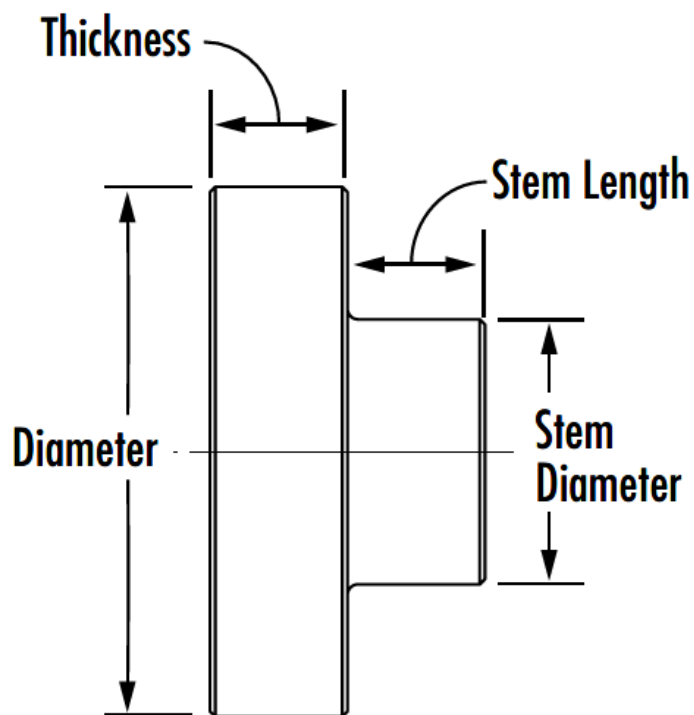
[All Products](#) / [Optics](#) / [Optical Mirrors](#) / [Flat Mirrors](#) / [Precision Polished Metal Coatings](#)

## **TECHSPEC®** Metallic Coated Stemmed Mirrors

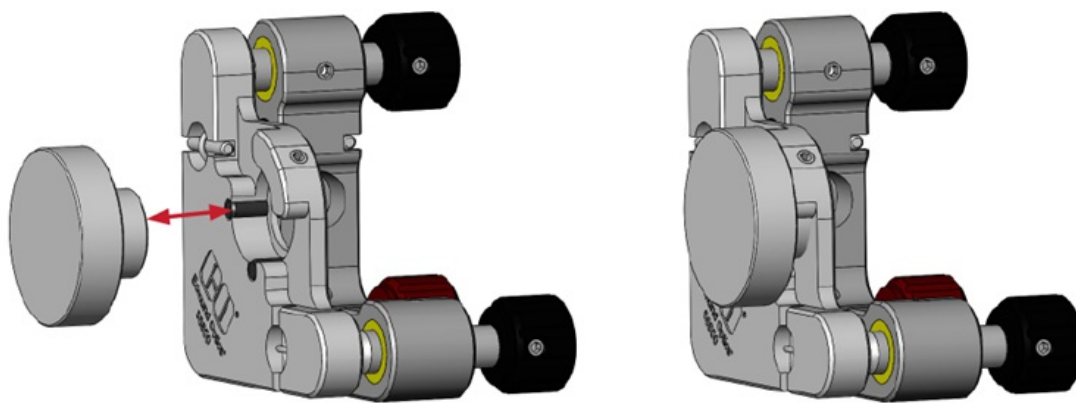


- Stemmed Design Reduces Stress on Mirror Surface when Mounted by Stem
- Durable Fused Silica Construction for Low Coefficient of Thermal Expansion
- Enhanced Aluminum, Protected Gold, and Protected Silver Coatings
- TECHSPEC® [Laser](#) and [Broadband Dielectric](#) Stemmed Mirrors Also Available

## Technical Information




A comparison of the aberrations introduced to a  $\lambda/10$  Stemmed Mirror and a  $\lambda/10$  First Surface Mirror when mounted in a kinematic mount. As shown, a Stemmed Mirror stays within  $\lambda/10$  specification up to 12 inoz of torque ("hand-tight") while a First Surface Mirror becomes out of specification with a surface flatness of  $\lambda/5$ .



**Stemmed Mirrors** are mounted to kinematic mounts by a stem on their back surface, resulting in no contact with the edges of the mirror surface.

# Products

Dia. (mm)	Surface Flatness (P-V)	Coating Specification	Coating	Thickness (mm)	Stock Number	Price	Buy
<a href="#">#14-577 Clearance</a>							
							
Clearance							
Availability is limited, so buy before these products disappear. Sorry, we cannot accept returns. Receive up to 80% off select products.							
25.00	λ/10	-	Uncoated	13.00		₹7,304	15 In Stock



Copyright 2023, Edmund Optics India Private Limited, #267, Greystone Building, Second Floor, 6th Cross Rd, Binnamangala, Stage 1, Indiranagar, Bengaluru, Karnataka, India 560038  
Phone: 1-800-363-1992 : [www.edmundoptics.com](http://www.edmundoptics.com)