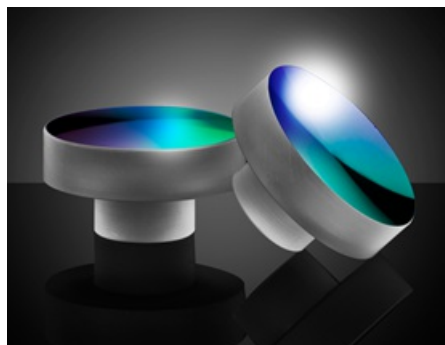


[All Products](#) / [Laser Optics](#) / [Laser Mirrors](#) / [Laser Line Mirrors](#)

TECHSPEC® Stemmed Laser Mirrors



- Stemmed Design Reduces Stress on Mirror Surface when Mounted by Stem
- >99% Reflectivity at Standard Laser Wavelengths
- 10-5 Surface Quality for Reduced Scatter in Sensitive Laser Applications
- TECHSPEC® [Broadband Dielectric](#) and [Metallic Coated](#) Stemmed Mirrors Also Available

Common Specifications

General

 Compatible Kinematic Mount: [#58-853](#)

Physical & Mechanical Properties

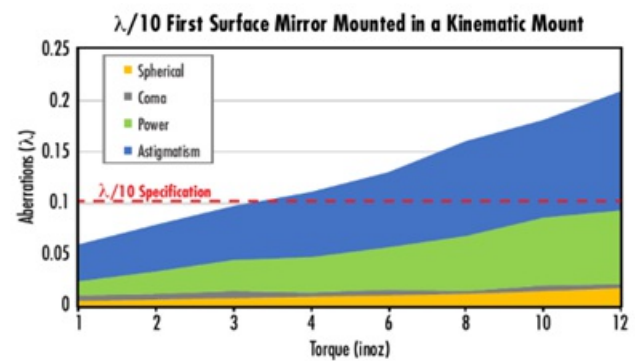
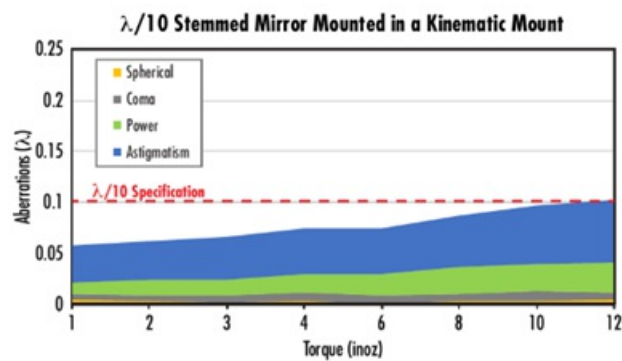
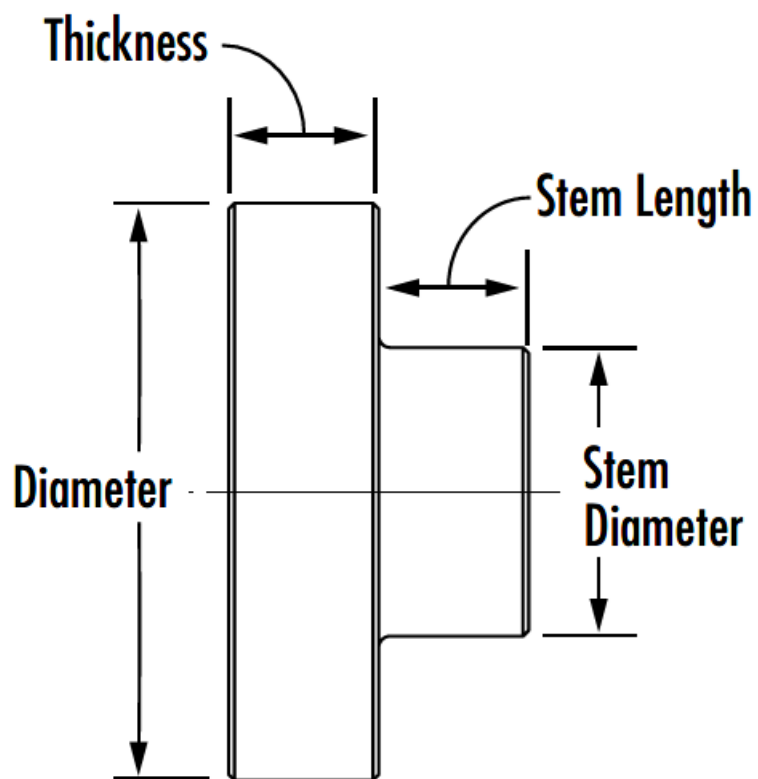
Back Surface: Commercial Polish

| | | | |
|---------------------|-------------------|-------------------|------------------------------------|
| Clear Aperture (%): | 90.00 | Diameter (mm): | 25.00 +0.00/-0.10 |
| Thickness (mm): | 13.00 ±0.20 | Edges: | Ground, protective bevel as needed |
| Stem Diameter (mm): | 12.50 +0.00/-0.10 | Stem Length (mm): | 6.50 ±0.20 |

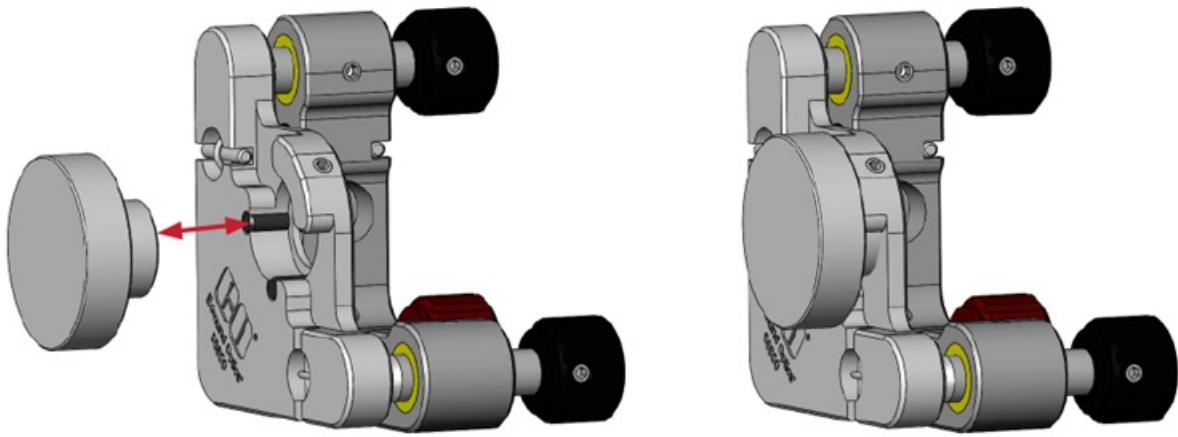
Optical Properties

| | | | |
|------------------|---|-------------------------|------|
| Substrate: | Fused Silica (Corning 7980) | Surface Flatness (P-V): | λ/10 |
| Surface Quality: | 10-5 | | |

Technical Information



A comparison of the aberrations introduced to a $\lambda/10$ Stemmed Mirror and a $\lambda/10$ First Surface Mirror when mounted in a kinematic mount. As shown, a Stemmed Mirror stays within $\lambda/10$ specification up to 12 inoz of torque ("hand-tight") while a First Surface Mirror becomes out of specification with a surface flatness of $\lambda/5$.



Stemmed Mirrors are mounted to kinematic mounts by a **stem** on their back surface, resulting in no contact with the edges of the mirror surface.

Products

| Substrate | Dia. (mm) | Coating | Stock Number | Price | Buy |
|--|--------------|-------------------------|--|---------------------------|---------------|
| #14-577 Clearance | | | | | |
|  | | | | | |
| Clearance | | | | | |
| Fused Silica | 25.00 | Uncoated | Availability is limited, so buy before these products disappear. Sorry, we cannot accept returns. Receive up to 80% off select products. | ₹11,160 Qty 6+ ₹8,910 | 10 to 12 days |
| #17-559 Clearance | | | | | |
|  | | | | | |
| Clearance | | | | | |
| Fused Silica | 25.00 | Laser Mirror (355nm) | Availability is limited, so buy before these products disappear. Sorry, we cannot accept returns. Receive up to 80% off select products. | ₹16,200 Qty 6+ ₹12,960 | 10 to 12 days |



Copyright 2023, Edmund Optics India Private Limited, #267, Greystone Building, Second Floor, 6th Cross Rd, Binnamangala, Stage 1, Indiranagar, Bengaluru, Karnataka, India 560038
Phone: 1-800-363-1992 :
www.edmundoptics.com