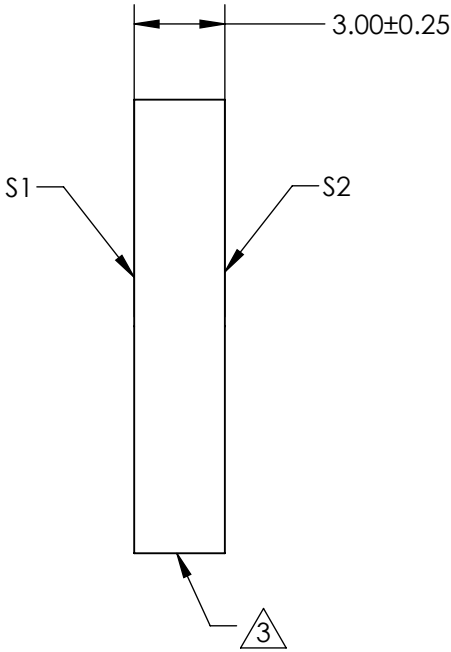
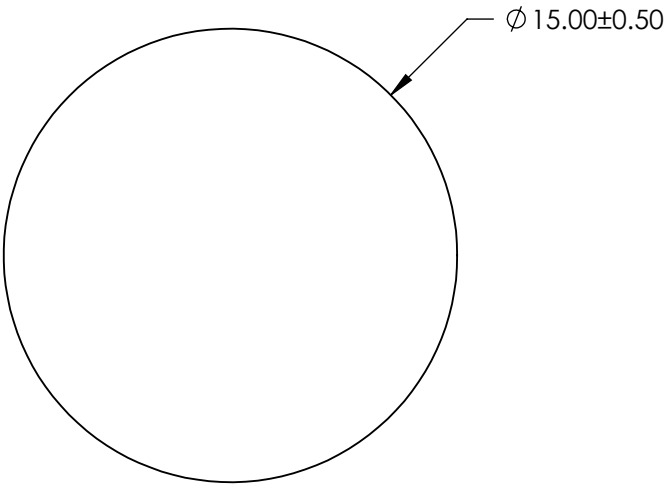
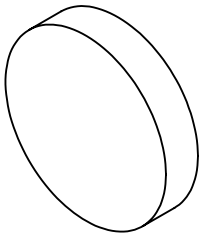


- NOTES:
- 1. SUBSTRATE: FLOAT GLASS
  - 2. COATING (APPLY ACROSS CLEAR APERTURE)  
  
S1 & S2: BBAR (425-700nm)  
R(AVG) ≤0.5% @ 425 - 700nm
  - 3. FINE GRIND SURFACE
  - 4. ROHS COMPLIANT



**FOR INFORMATION ONLY:  
DO NOT MANUFACTURE  
PARTS TO THIS DRAWING**


SPECIFICATIONS SUBJECT TO CHANGE WITHOUT NOTICE  
DIMENSIONS ARE FOR REFERENCE ONLY

	S1	S2
SHAPE	PLANO	PLANO
SURFACE QUALITY	80 - 50	80 - 50
CLEAR APERTURE	Ø 13.50	Ø 13.50
BEVEL	PROTECTED AS NEEDED	PROTECTED AS NEEDED

THIRD ANGLE  
PROJECTION

ALL DIMS IN

mm

 Edmund Optics®

TITLE

15mm Dia. x 3mm High Efficiency Window

DWG NO

71569

SHEET

6 OF 18