

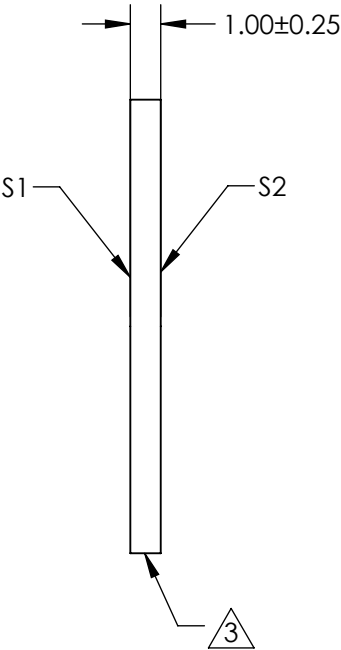
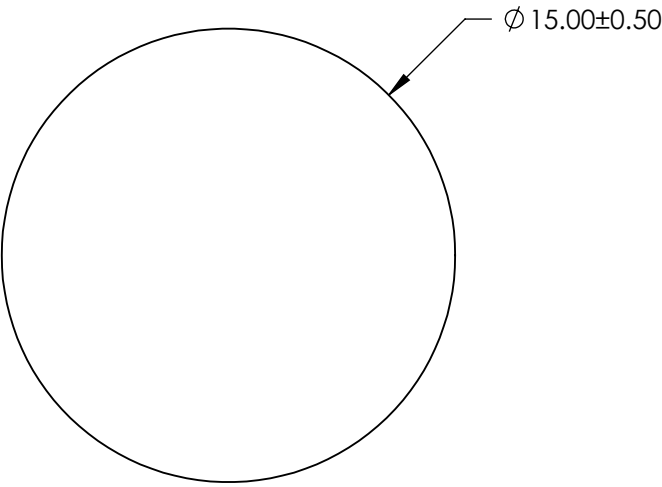
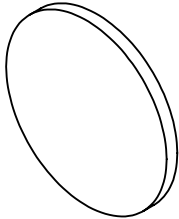
NOTES:

- 1. SUBSTRATE: FLOAT GLASS
- 2. COATING (APPLY ACROSS CLEAR APERTURE)

S1 & S2: BBAR (425-700nm)  
R(AVG) ≤0.5% @ 425 - 700nm

3. FINE GRIND SURFACE

- 4. ROHS COMPLIANT




**FOR INFORMATION ONLY:  
DO NOT MANUFACTURE  
PARTS TO THIS DRAWING**

SPECIFICATIONS SUBJECT TO CHANGE WITHOUT NOTICE  
DIMENSIONS ARE FOR REFERENCE ONLY

	S1	S2
SHAPE	PLANO	PLANO
SURFACE QUALITY	80 - 50	80 - 50
CLEAR APERTURE	Ø 13.50	Ø 13.50
BEVEL	PROTECTED AS NEEDED	PROTECTED AS NEEDED

THIRD ANGLE  
PROJECTION

ALL DIMS IN      mm

 **Edmund Optics®**

TITLE	15mm Dia. x 1mm High Efficiency Window	
DWG NO	71568	SHEET 5 OF 18