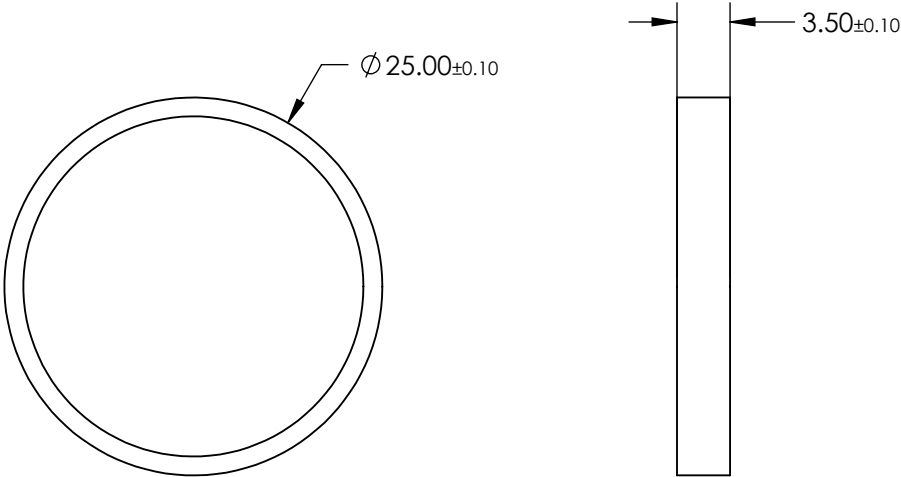


NOTES:


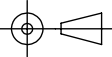
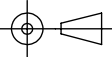
- 1. SUBSTRATE:
OPTICAL GRADE GLASS
- 2. BANDWIDTH: 14nm
- 3. BLOCKING WAVELENGTH RANGE: 330 - 900nm
- 4. MINIMUM TRANSMISSION (%): >93 @ 643 – 657nm
- 5. ROHS COMPLIANT

NOTE: ARROW ON RING INDICATES PREFERRED DIRECTION OF PROPAGATION OF LIGHT.



**FOR INFORMATION ONLY:
DO NOT MANUFACTURE
PARTS TO THIS DRAWING**

SPECIFICATIONS SUBJECT TO CHANGE WITHOUT NOTICE
DIMENSIONS ARE FOR REFERENCE ONLY

	S1	S2	 Edmund Optics®			
SHAPE	PLANO	PLANO				
CONE HALF ANGLE (°)	7	7				
OPTICAL DENSITY OD (AVERAGE)	>5	>5				
SURFACE QUALITY	80 - 50	80 - 50		TITLE		650nm CWL, >OD5, 20nm FWHM Bandpass Filter, 25mm Dia.
CLEAR APERTURE	≥ Ø 10.00	≥ Ø 10.10		DWG NO		78441
BEVEL	PROTECTED AS NEEDED	PROTECTED AS NEEDED		SHEET		32 OF 52
			ALL DIMS IN	mm		