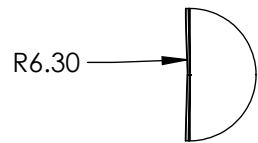
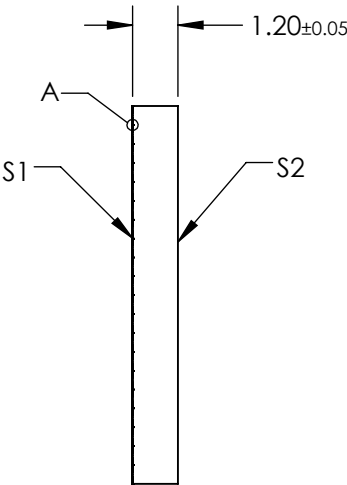
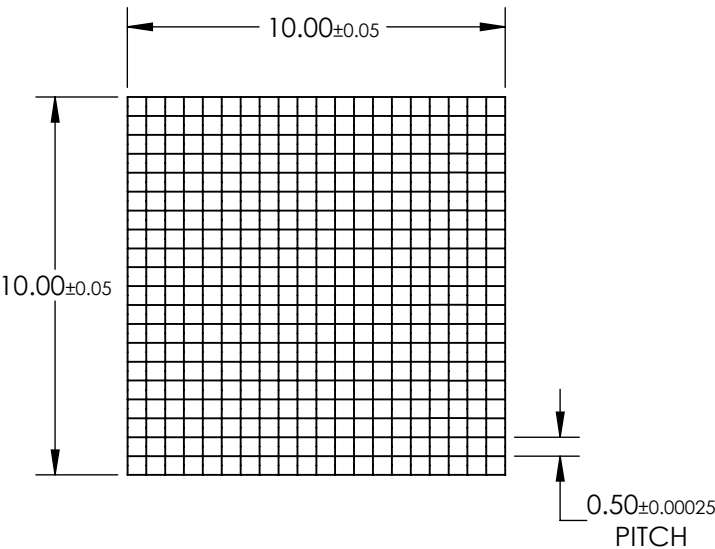


NOTES:

- 1. SUBSTRATE:
Fused Silica
- 2. COATING (APPLY ACROSS COATING APERTURE):
S1 & S2: VIS 0° (425-675nm)
R(AVG) ≤0.4% @ 425 - 675nm
- 3. EFFECTIVE FOCAL LENGTH: 13.8mm
- 4. DIVERGENCE ANGLE: ±1.2 °
- 5. WAVELENGTH RANGE (nm): 250 - 700
- 6. ROHS: COMPLIANT



DETAIL A



SPECIFICATIONS SUBJECT TO CHANGE WITHOUT NOTICE
DIMENSIONS ARE FOR REFERENCE ONLY

**FOR INFORMATION ONLY:
DO NOT MANUFACTURE
PARTS TO THIS DRAWING**

Edmund Optics®

| | | | | |
|------------------------|----|--------|--|--------------|
| THIRD ANGLE PROJECTION | | TITLE | Microlens Array 10 x 10mm, 500µm Pitch, 1.2° Divergence, VIS 0° Coated | |
| ALL DIMS IN | mm | DWG NO | 72244 | SHEET 1 OF 1 |