

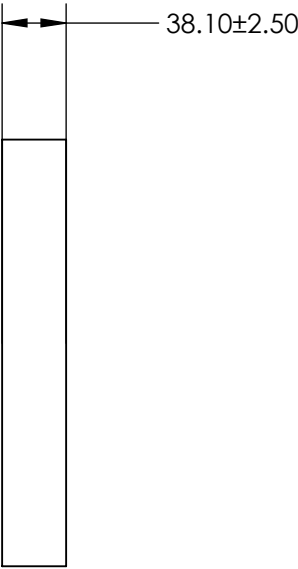
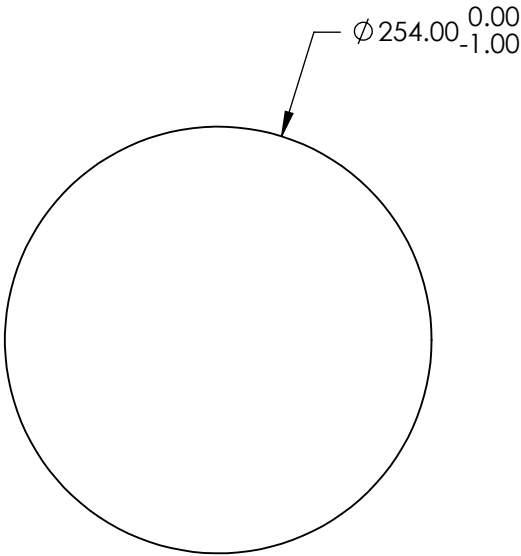
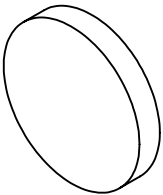
NOTES:

- 1. SUBSTRATE:  
ZERODUR®
- 2. SURFACE S2 TO BE PARALLEL WITH SURFACE S1 TO <3 ARCMIN
- 3. COATING (APPLY ACROSS CLEAR APERTURE)  
S1: Protected Silver (450-10000nm)  
R(avg) >98% @ 450 - 2000nm  
R(avg) >98% @ 2000 - 10,000nm  
S2: NONE

4. ARROW ON EDGE POINTING TOWARD SURFACE S1

5. FINE GRIND SURFACE


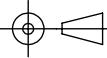
6. ROHS COMPLIANT



**FOR INFORMATION ONLY:  
DO NOT MANUFACTURE  
PARTS TO THIS DRAWING**

SPECIFICATIONS SUBJECT TO CHANGE WITHOUT NOTICE  
DIMENSIONS ARE FOR REFERENCE ONLY

	S1	S2
SHAPE	PLANO	PLANO
SURFACE FLATNESS	$\lambda/20$	N/A
SURFACE QUALITY	60-40	COMMERICAL POLISH
CLEAR APERTURE	$\phi 228.60$	$\phi 228.60$
BEVEL	PROTECTED AS NEEDED	PROTECTED AS NEEDED

 Edmund Optics®			
THIRD ANGLE PROJECTION 		TITLE	10" Dia. Protected Silver, $\lambda/20$ Flat ZERODUR®
ALL DIMS IN	mm	DWG NO	71110577
			SHEET 15 OF 20