

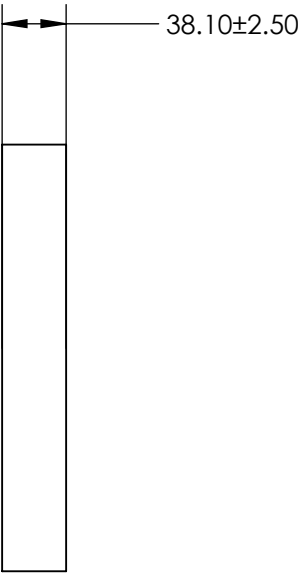
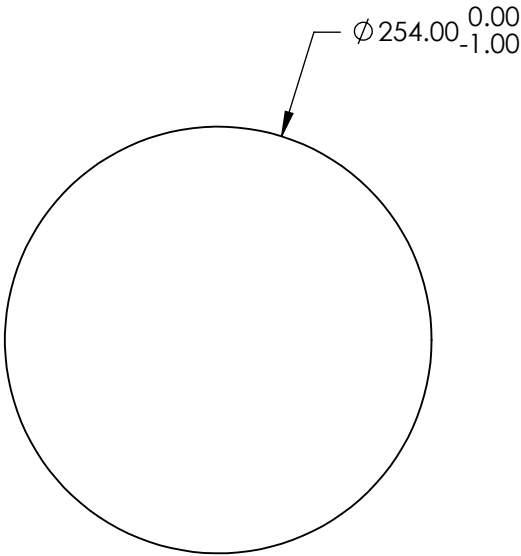
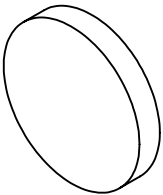
NOTES:

- 1. SUBSTRATE:
ZERODUR®
- 2. SURFACE S2 TO BE PARALLEL WITH SURFACE S1 TO <3 ARCMIN
- 3. COATING (APPLY ACROSS CLEAR APERTURE)
S1: Protected Gold (700-10000nm)
R(avg) >96% @ 700 - 2000nm
R(avg) >96% @ 2000 - 10,000nm
S2: NONE

4. ARROW ON EDGE POINTING TOWARD SURFACE S1



5. FINE GRIND SURFACE

6. ROHS COMPLIANT



**FOR INFORMATION ONLY:
DO NOT MANUFACTURE
PARTS TO THIS DRAWING**

SPECIFICATIONS SUBJECT TO CHANGE WITHOUT NOTICE
DIMENSIONS ARE FOR REFERENCE ONLY

	S1	S2			 Edmund Optics®		
SHAPE	PLANO	PLANO					
SURFACE FLATNESS	$\lambda/10$	N/A			10" Dia. Protected Gold, $\lambda/10$ Flat ZERODUR®		
SURFACE QUALITY	60-40	COMMERICAL POLISH					
CLEAR APERTURE	\varnothing 228.60	\varnothing 228.60					
BEVEL	PROTECTED AS NEEDED	PROTECTED AS NEEDED	ALL DIMS IN	mm	DWG NO	71108566	SHEET 4 OF 20